



Short Repair Couplings

Space Saving, Compact Version of Standard Repair Coupling Requires 1/3 less Space



(SH118) Spigot x Socket

(SH119) Socket x Socket

- Compact Telescoping Design
- Socket x Socket Configuration for Pipe Repair or Use as a Short-Stroke Expansion Joint
- Spigot x Socket Configuration for Replacing Damaged Fittings
- Both Configurations can be Easily Modified for Opposite Use
- Available in PVC White, Sizes 1/2" - 2"
- EPDM Double O-ring Seal
- Pressure Rated to 235 PSI @ 73°F (23°C)
- NSF® Certified for Potable Water Use

Repair Coupling - Short, Spigot x Socket

PVC White with EPDM O-ring



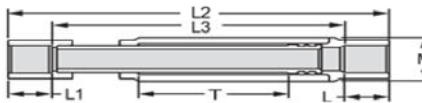
Pressure Rating
235 psi @ 73° F

Part Number	Size	L	L2	L3	M	T	Approx. Wt. (Lbs.)
SH118-05	1/2	11/16	4-7/8	4-3/16	1-7/16	1-15/16	.20
SH118-07	3/4	3/4	5-3/8	4-11/16	1-3/4	2-3/16	.31
SH118-10	1	15/16	5-3/4	4-13/16	2-1/16	2	.42
SH118-12	1-1/4	1	6-5/8	5-5/8	2-7/16	2-1/2	.60
SH118-15	1-1/2	1-1/8	6-15/16	5-13/16	2-11/16	2-1/2	.74
SH118-20	2	1-3/16	8-5/16	7-1/8	3-1/4	3	1.19

Unit Must Be Thrust Blocked

Repair Coupling - Short, Socket x Socket

PVC White with EPDM O-ring



Pressure Rating
235 psi @ 73° F

Part Number	Size	L	L1	L2	L3	M	T	Approx. Wt. (Lbs.)
SH119-05	1/2	11/16	7/8	5-7/8	4-1/4	1-7/16	1-15/16	.24
SH119-07	3/4	3/4	1	6-9/16	5-13/16	1-3/4	2-3/16	.36
SH119-10	1	15/16	1-1/8	7	4-15/16	2-1/16	2	.51
SH119-12	1-1/4	1	1-1/4	8	5-3/4	2-7/16	2-1/2	.74
SH119-15	1-1/2	1-1/8	1-3/8	8-3/8	5-7/8	2-11/16	2-1/2	.88
SH119-20	2	1-3/16	1-1/2	10	7-5/16	3-1/4	3	1.41

Unit Must Be Thrust Blocked