



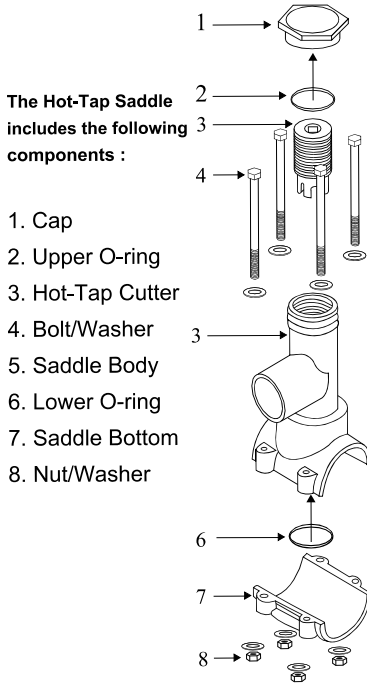
Schedule 40 Fittings Technical Hot-Tap Saddle Installation

Basic Installation

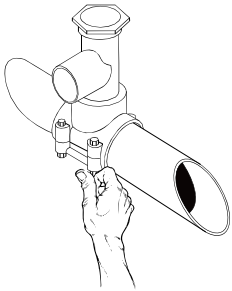
Hot-Tap Saddles are designed for adding branch connections to piping systems under live ("hot") pressure. Hot-Tap Saddle branch outlets are either 3/4" socket (with 1" Spigot O.D.) or 1-1/2" socket (with 2" Spigot O.D.) in saddle sizes 2" through 8" to fit IPS pipe using a built-in O-ring seal. Internal cutter is operated using conventional ratchet and drive extension and permanently retains coupon cut from pipe. Maximum operating pressure at 73°F is 235 psi for saddle sizes 2" - 4", 200 psi for 6" saddles & 150 psi for 8".

SEE PRODUCT INSTALLATION INSTRUCTION (HT-3A) FOR DETAILS

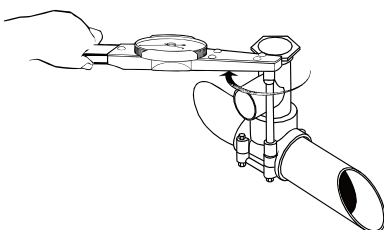
COMPONENTS



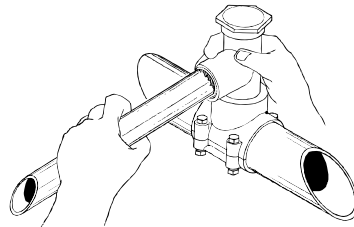
STEP 1 Assemble on Pipe



STEP 2 Torque to Specifications

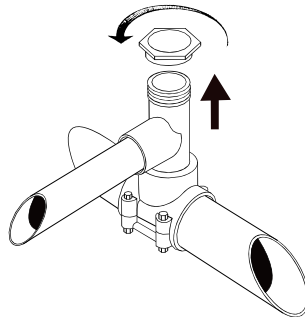


STEP 3 Cement Branch Take-off

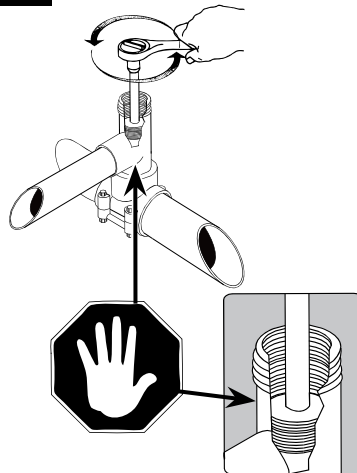


Allow joint to cure.

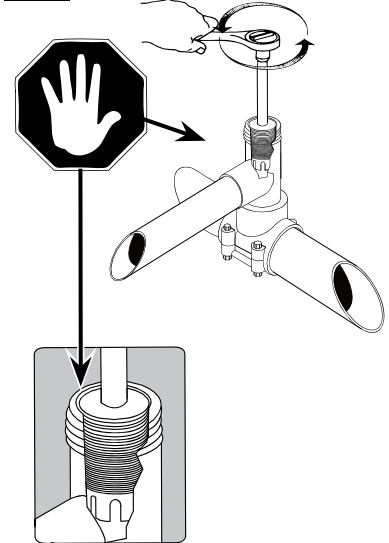
STEP 4 Remove Cap



STEP 5 Tap to Required Depth



STEP 6 Back-off Cutter to Top to Open Flow



STEP 7 Reinstall Opening Sealed Cap

