



Hot-Tap Saddles



ENGINEERING GUIDE

Contact Spears® for any Information not found.



Allows Connection to Existing Pipelines Under Pressure



Specially designed tapping saddle allows pipe branch connection to pressurized "Hot" lines without system shut-down. Available in PVC White, Gray or CPVC Gray configurations.

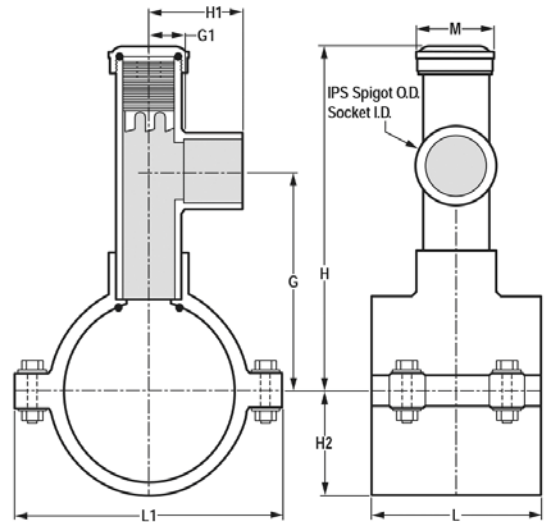
- Industrial Grade Bolt-on Saddle with EPDM or FKM O-ring Seals and Choice of Zinc Plated Steel or Type 316 Stainless Steel Hardware.
 - Built-in Brass or Stainless Steel Cutter Easily Cuts Hole in PVC, CPVC, HDPE and PP Pipe. Special Design Captures and Retains Coupon from Hole.
 - Pressure Rated to 235 psi @ 73°F.
- Available to fit IPS Pipe 2" through 8" with Versatile 3/4" Socket - 1" Spigot Combination Branch Outlet or 1"-1/2" Socket - 2" Spigot Combination Branch Outlet.

TECHNICAL DATA

| Maximum Service Temperatures | | Pressure Rating @ 73°F | |
|--|-------|------------------------|---------|
| PVC | 140°F | 2" - 4" | 235 psi |
| CPVC | 200°F | 6" | 200 psi |
| Note: Elevated service temperatures | | 8" | 150 psi |
| require system pressure de-rating. | | | |

Not for Distribution of Compressed Air or Gas

Some leakage is possible during the tapping process, therefore "hot-taps" are not recommended for corrosive or dangerous fluid medium.



Dimensions - Saddle x Socket (Spigot)

| Size | G | G1 | H | H 1 | H2 | L | L1 | M |
|-------------------|---------|-------|----------|---------|---------|--------|---------|-------|
| 2 x 3/4 (1) | 3-9/16 | 1 | 6-3/16 | 2 | 1-1/2 | 2-7/16 | 3-7/16 | 2 |
| 2 x 1-1/2 (2) | 4-1/2 | 1-1/4 | 8-1/2 | 2-11/16 | 1-1/2 | 2-7/16 | 3-7/8 | 2-7/8 |
| 2-1/2 x 3/4 (1) | 3-15/16 | 1 | 6-9/16 | 2 | 1-3/4 | 4-1/8 | 4-1/8 | 2 |
| 2-1/2 x 1-1/2 (2) | 4-13/16 | 1-1/4 | 8-3/16 | 2-11/16 | 1-3/4 | 4-1/8 | 4-1/8 | 2-7/8 |
| 3 x 3/4 (1) | 3-15/16 | 1 | 6-5/8 | 2 | 2 | 3 | 4-3/4 | 2 |
| 3 x 1-1/2 (2) | 5-1/8 | 1-1/4 | 9-1/8 | 2-11/16 | 2 | 4-1/8 | 4-3/4 | 2-7/8 |
| 4 x 3/4 (1) | 4-11/16 | 1 | 7-5/16 | 2 | 2-5/8 | 3 | 5-13/16 | 2 |
| 4 x 1-1/2 (2) | 5-1/4 | 1-1/4 | 9-5/8 | 2-11/16 | 2-5/8 | 4-1/8 | 5-13/16 | 2-7/8 |
| 6 x 3/4 (1) | 6 | 1 | 8-5/8 | 2 | 3-13/16 | 3 | 8-3/16 | 2 |
| 6 x 1-1/2 (2) | 6-15/16 | 1-1/4 | 10-15/16 | 2-11/16 | 3-13/16 | 4-1/8 | 8-3/16 | 2-7/8 |
| 8 x 3/4 (1) | 6-3/4 | 1 | 9-5/16 | 2 | 4-7/8 | 8-1/2 | 10-1/16 | 2 |
| 8 x 1-1/2 (2) | 8-1/4 | 1-1/4 | 12-1/4 | 2-11/16 | 4-7/8 | 8-1/2 | 10-1/16 | 2-7/8 |



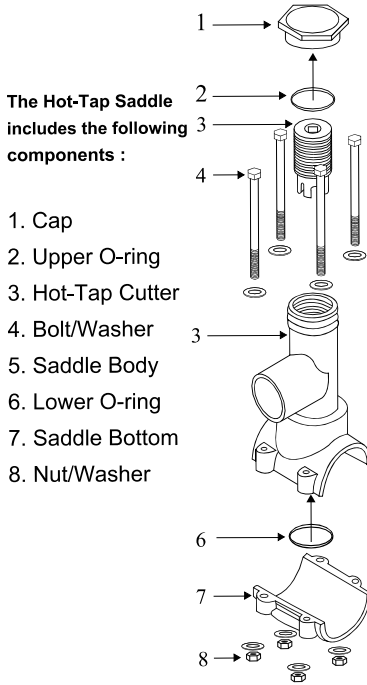
Schedule 40 Fittings Technical Hot-Tap Saddle Installation

Basic Installation

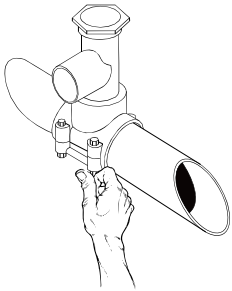
Hot-Tap Saddles are designed for adding branch connections to piping systems under live ("hot") pressure. Hot-Tap Saddle branch outlets are either 3/4" socket (with 1" Spigot O.D.) or 1-1/2" socket (with 2" Spigot O.D.) in saddle sizes 2" through 8" to fit IPS pipe using a built-in O-ring seal. Internal cutter is operated using conventional ratchet and drive extension and permanently retains coupon cut from pipe. Maximum operating pressure at 73°F is 235 psi for saddle sizes 2" - 4", 200 psi for 6" saddles & 150 psi for 8".

SEE PRODUCT INSTALLATION INSTRUCTION (HT-3A) FOR DETAILS

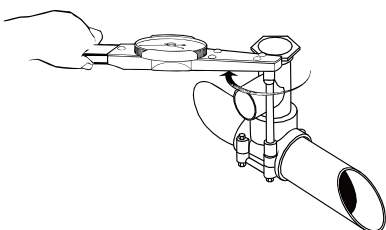
COMPONENTS



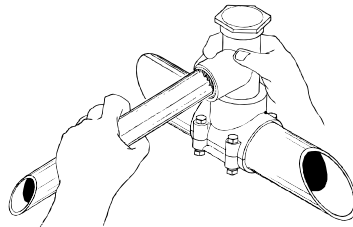
STEP 1 Assemble on Pipe



STEP 2 Torque to Specifications

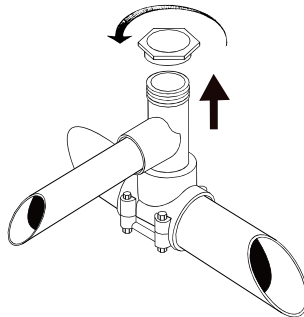


STEP 3 Cement Branch Take-off

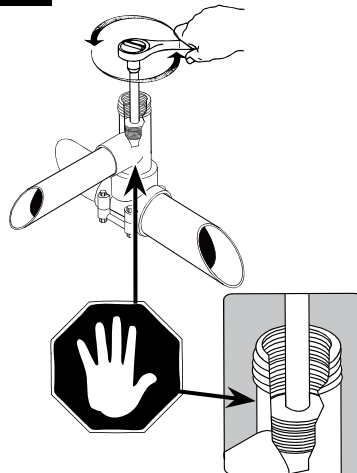


Allow joint to cure.

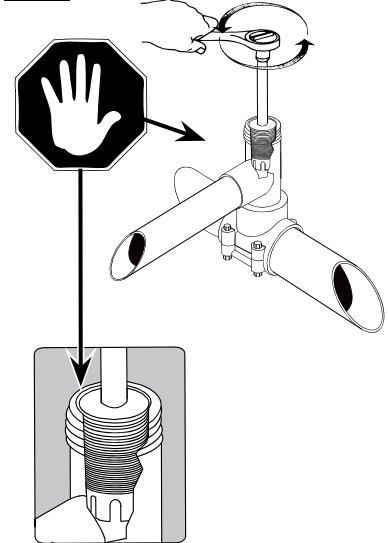
STEP 4 Remove Cap



STEP 5 Tap to Required Depth



STEP 6 Back-off Cutter to Top to Open Flow



STEP 7 Reinstall Opening Sealed Cap

