

Advantages of CLIC® Hangers for Multiple Applications

Pipe and cable fastening system for the sanitary and electrical industries

The single-piece, self-closing CLIC® fastening solution is highly efficient, thanks to up to 60% faster installation. The CLIC® pipe and cable fastening system is suitable for the installation of cables, looms of cables and pipes of any kind in houses and moderate environments - Not just for Plastic Pipe - Works with Steel, Copper, Cast Iron, Coaxial & Electrical Cabling.

CLIC® fastening system

Thanks to the varied product line, the CLIC® fastening system offers suitable applications for all areas:

- Irregular wall distances
- Various fastening points next to each other
- Cables on pipes or pipes on pipes
- Fastening on wood, concrete or bricks
- Strut rails and hanger support systems

Fields of application

CLIC® or CLIC® TOP offer choices suitable for indoor and outdoor sanitary and electrical installations of any kind. Based on the excellent outgassing rates, CLIC® is also used for installations in clean rooms of laboratories, hospitals and in the semi-conductor industry. The pre-assembly of the retention points and the subsequent CLIC-ing in of the cables or pipes with one hand reduces the installation time, thus saving costs in the amount of 60% compared to conventional systems.



CLIC® TOP - The Premium One-Piece Self Locking Plastic Pipe Clamp. Pure Polyamide Construction UV Resistant for Indoor or Outdoor Installation

Engineered for Exceptional Ease of Use

Even One-Handed fastening can be made with this unique CLIC® TOP clamp assembly. Easily secured to supporting structures with user supplied bolts or screws. Stand-Off spacers in assorted lengths allow convenient spacing from mounting surfaces.

- Excellent Protection for Plastic Piping - No Sharp Edges
- Available for IPS Pipe 1/8" - 4" & CTS Pipe 1/2" - 2", Plus Popular 1-1/2" Tubing Size for Conduit & Other Applications
- High Strength Polyamite PA12
- Working Temperature -40° to 230°F Long-term
- Excellent Chemical Resistance
- Hinges Allow Installation Down to -13°F
- High Low-Temperature Impact Strength
- High Flexibility at Low and High Temperatures
- UL® 94 HB Flammability Rating

CLIC® Economical - One-Piece Self Locking Plastic Pipe Clamp. Copolymer Construction for Indoor Installation Only

- Excellent Protection for Plastic Piping - No Sharp Edges
- Available for IPS Pipe 1/8" - 4" & CTS Pipe 1/2" - 2", Plus Popular 1-1/2" Tubing Size for Conduit & Other Applications
- High Quality Copolymer
- Working Temperature -13° to 194°F Long-term
- Good Chemical Resistance
- Hinges Allow Installation Down to 14°F
- UL® 94 HB Flammability Rating



CLIC® TOP & CLIC® 1/8" to 2" – Pipe Sizes

The advantages of the original

Secure, fast, economical, user-friendly - a true fact. the outstanding features of CLIC® are self-explanatory. Benefit from the advantages and the safety of the original that has proved itself since 1975.

Compact design

One-piece:
- space-saving
- no loss of screws

Smooth surface

Allows pipe expansion/contraction lengthwise.

Slotted hole for accurate fixation

For Position adjustments

Center mark

Perfect positioning.

Less inventory

The flexible locking system allows installation of multiple diameter pipes with fewer clamp sizes

Integrated rotary lock

Easiest mounting on base plates.

Thoothed annulus

Accurate positioning on spacers.

Two step locking

The lock with two catches combines essential features in a unique manner:

- wide clamping range
- high loading capacity, secure hold
- easy to open

Strong swivel joints

The patented joint mechanism together with high-quality plastics allows installation work at very low temperatures.

Flexible jaws

In conjunction with the flexibility of the material, pipe tolerances can be compensated to a large extent.

Slot for threaded Flange Nut

Flange Nut

For 1/4" - 20 Rod or Bolt

Flange Nut Adapter

Adapter for 3/8" - 16 Rod or Bolt

Strut Hanger

Mounts to standard 1-5/8" width Strut Channel. Includes screw for mounting to center of CLIC® Hanger.

- No corrosion
- Electromagnetically neutral
- Noise absorbing
- Internationally certified
- Recyclable plastics
- Halogen-free, CFC-free
- Several colors

CLIC® TOP & CLIC® 2-1/2" to 4" – Pipe Sizes

Perfect for large pipes

For large diameters CLIC also offers the perfect solution with high-quality plastic materials. Count on the advantages and quality of the original that proves itself world-wide successfully, even under very hard conditions, for more than 25 years.

Compact design

One-piece:
- space saving
- no loss of screws

Smooth surface

Allows pipe expansion/contraction lengthwise.

3 slotted holes for secure and accurate fixation

For position adjustments.

Center marks for threads and screws

Perfect positioning.

Less inventory

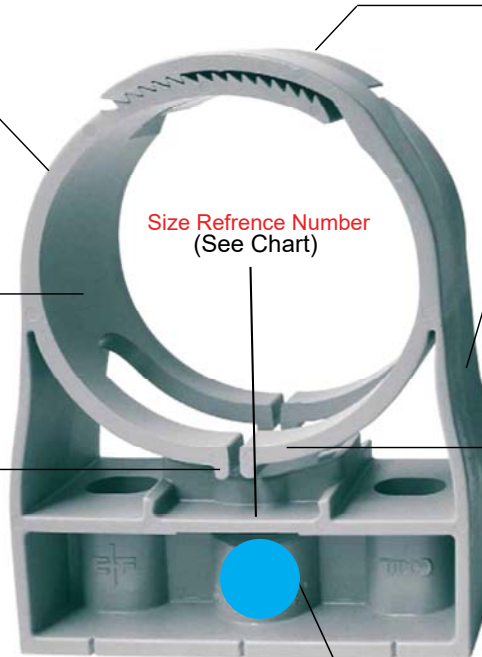
The flexible locking system allows installation of multiple diameter pipes with fewer clamp sizes.

Large base

For high stability.

Integrated thread

The larger CLIC® is provided with an inside thread for mountings with 1/2" threads.



Size Reference Number
(See Chart)

Safety lock

The only pipe clamp with the extra strong double interlocking closing mechanism for absolute secure hold.
- wide clamping range
- high loading capacity, secure hold
- easy to open

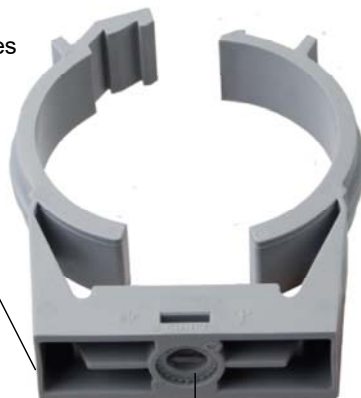
Strong swivel joints

The patented joint mechanism together with high-quality plastics allows installation work also at very low temperatures.

Flexible jaws

In conjunction with the flexibility of the material, pipe tolerances can be compensated to a large extent.

Slot for threaded Flange Nut



Flange Nut

For 1/4" - 20 Rod or Bolt



Flange Nut Adapter

Adapter for 3/8" - 16 Rod or Bolt



Strut Hanger

Mounts to standard 1-5/8" width Strut Channel. Includes screw for mounting to center of CLIC® Hanger.

- No corrosion
- Electromagnetically neutral
- Noise absorbing
- Internationally certified
- Recyclable plastics
- Halogen-free, CFC-free
- Diverse colors



Pipe & Hangers Technical Technical Information & Dimensions

CLIC® Spacer



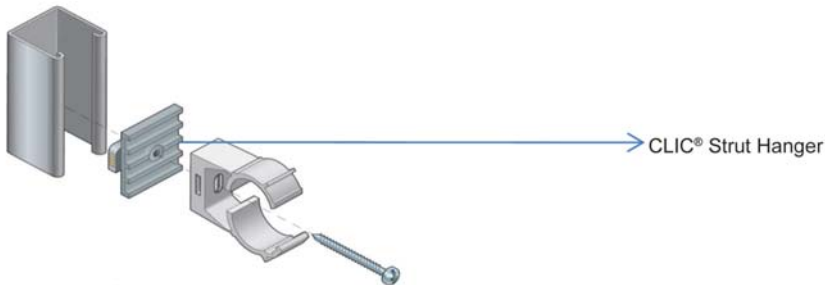
For indoor and outdoor mounting of CLIC® plastic cable clamps at a distance of 1/8 - 4 inches.

Easy to install



Simply mount CLIC®, push pipe in by hand, grips and locks by applying slight pressure.
To open: unlock the CLIC® latch with screwdriver.

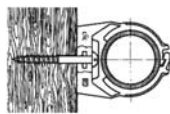
Strut Hanger



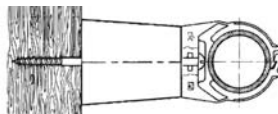
For 2-1/2" to 4" use 2 #10 screws 2 1/2" long on each hanger.
Use flat washers on screw head as necessary.

Typical Installation

Wood

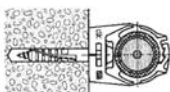


with wood screw

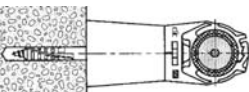


with wood screw and
CLIC® spacer

Concrete



with wood screw
and nylon plug



with wood screw, CLIC® spacer and
nylon plug

For 2-1/2" to 4" use 2 screws on each hanger.

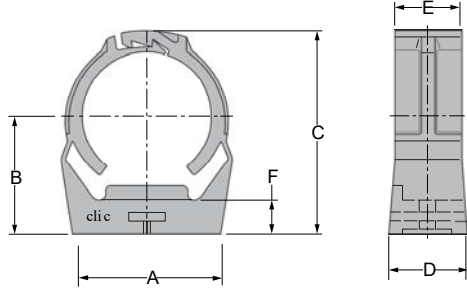
Suitable for Oil-Free air handling to 25 psi, not for distribution of compressed air or gas
See Spears® Product Sourcebook for product offerings

Spears® Manufacturing Company

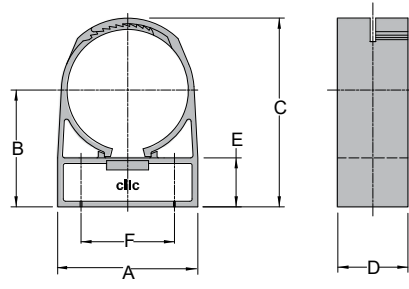
Pipe & Hangers Technical Technical Information & Dimensions



Technical Information - Clamps



1/8" through 2" Dimensions

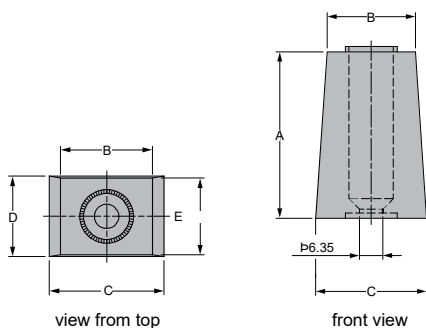


2-1/2" through 4" Dimensions

CLIC® Type	Pipe Size [inches]	CLIC® TOP Part Number	CLIC® TOP Working Load [lbs. Force]*	CLIC® Economical Part Number	CLIC® Working Load*	Clamping Range [inches]	A [inches]	B [inches]	C [inches]	D [inches]	E [inches]	F [inches]
8	8mm	CLIC-8M	38.2	CLIC2-8M	30.3	19/64-23/64	11/16	11/16	1-1/32	11/16	19/32	5/16
10	1/8 IPS	CLIC-001	41.6	CLIC2-001	33.7	23/64 - 29/64	11/16	11/16	1-1/32	11/16	19/32	5/16
12	1/4 IPS	CLIC-002	45.0	CLIC2-002	35.9	29/64 - 9/16	13/16	25/32	1-1/8	11/16	19/32	5/16
17	3/8 IPS	CLIC-003	52.8	CLIC2-003	42.7	21/32 - 49/64	29/32	15/16	1-13/32	25/32	21/32	5/16
15	1/2 CTS	CLIC-005CTS	49.5	CLIC2-005CTS	39.3	9/16 - 21/32	27/32	3/4	1-9/32	11/16	19/32	5/16
20	1/2 IPS	CLIC-005	56.2	CLIC2-005	44.9	49/64 - 27/32	1	1	1-9/16	25/32	21/32	5/16
22	3/4 CTS	CLIC-007CTS	60.7	CLIC2-007CTS	48.3	27/32 - 31/32	1-1/8	1-1/32	1-21/32	25/32	21/32	5/16
25	3/4 IPS	CLIC-007	67.4	CLIC2-007	53.9	31/32 - 1-3/32	1-7/32	1-1/8	1-25/32	25/32	11/16	11/32
28	1 CTS	CLIC-010CTS	71.9	CLIC2-010CTS	58.4	1-3/32 - 1-7/32	1-5/16	1-1/4	1-15/16	13/16	11/16	11/32
32	1 IPS & 1-1/4 CTS	CLIC-012CTS/010	83.2	CLIC2-012CTS/010	67.4	1-7/32 - 1-25/64	1-1/2	1-3/8	2-5/32	27/32	11/16	3/8
36	1-1/2 TUBING	CLIC-015-TUBING	98.9	CLIC2-015-TUBE	71.9	1-25/64-1-35/64	1-21/32	1-7/16	2-11/32	27/32	23/32	3/8
40	1-1/4 IPS & 1-1/2 CTS	CLIC-015CTS/012	89.9	CLIC2-015CTS/012	80.9	1-35/64 - 1-45/64	1-13/16	1-1/2	2-17/32	27/32	3/4	3/8
47	1-1/2 IPS	CLIC-015	105.7	CLIC2-015	84.3	1-53/64 - 1-63/64	2-1/8	1-23/32	2-7/8	7/8	25/32	13/32
51	2 CTS	CLIC-020CTS	112.4	CLIC2-020CTS	89.9	1-63/64 - 2- 21/64	2-5/16	1-27/32	3-1/8	29/32	25/32	13/32
59	2 IPS	CLIC-020	121.4	CLIC2-020	96.6	2-19/64 - 2-33/64	2-5/8	2-1/16	3-15/32	15/16	27/32	7/16
63	2-1/2 TUBING	CLIC-025-TUBING	121.4	CLIC2-025-TUBE	53.9	2-15/32 - 2-25/32	3-7/16	3-1/32	4-29/32	1-19/32	1-1/4	2-9/32
71	2-1/2 IPS	CLIC-025	98.9	CLIC2-025	69.7	2-25/32 - 3-5/32	3-7/16	3-1/32	4-29/32	1-19/32	1-1/4	2-9/32
80	3 IPS	CLIC-030	121.4	CLIC2-030	85.4	3-5/32 - 3-17/32	4-29/32	3-25/32	6-7/16	1-19/32	1-1/4	3-13/32
113	4 IPS	CLIC-040	188.8	CLIC2-040	132.6	4-29/64 - 5	5-1/2	4-5/32	7-3/32	1-19/32	1-1/4	4-1/32

*With screw at 73°F; includes safety factor of approximately 3.

Technical Information - Stand-Off Spacers



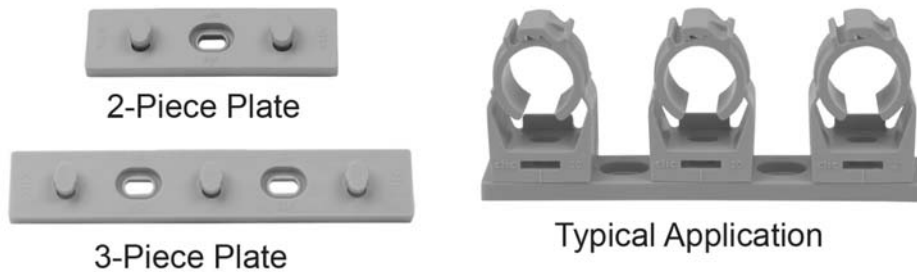
Spears® Part Number	A [inches]	B [inches]	C [inches]	D [inches]	E [inches]
CLIC-SP2	1/8	31/32	1	27/32	25/32
CLIC-SP5	7/32	31/32	1	27/32	25/32
CLIC-SP15	19/32	31/32	1-3/16	27/32	25/32
CLIC-SP25	1	31/32	1-3/16	27/32	25/32
CLIC-SP35	1-3/8	31/32	1-3/16	27/32	25/32
CLIC-SP45	1-25/32	31/32	1-3/16	27/32	25/32
CLIC-SP65	2-9/16	31/32	1-3/16	21/32	25/32
CLIC-SP85	3-11/32	1-3/16	1-31/32	1-3/16	29/32



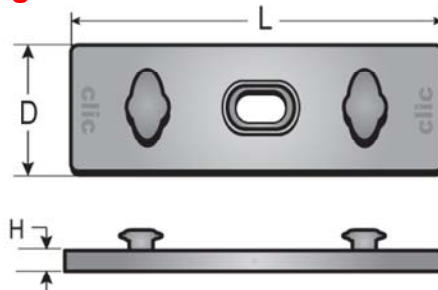
Pipe & Hangers Technical Technical Information & Dimensions

CLIC® Top & CLIC® Mounting Base Plates

Mounting Base Plates are designed for easy mounting of hangers for running 2 or 3 pipe lines. The MBP-2 accommodates 2 hangers while the MBP-3 accommodates 3-hangers. CLIC® Top or CLIC® hangers snap-fit onto the respective base plate facilitating quick connection and alignment of the paired hanger assemblies. Mounting Base Plates can be used with hangers designated for 1/8" to 3/4" IPS pipe and 1/2 to 1" CTS pipe (CLIC® # 8 to 28). For indoor or outdoor use.

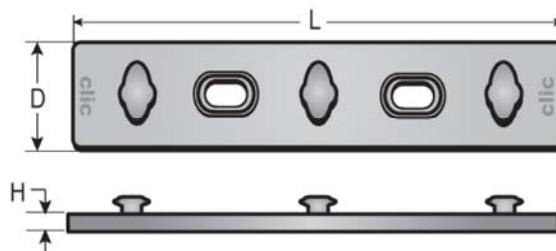


2 Piece CLIC® Top Mounting Base Plates



Spears® Part Number	D	H	L
MBP-2	3/4	3/16	2-3/4

3-Piece CLIC Top & CLIC Mounting Base Plates



Spears® Part Number	D	H	L
MBP-3	3/4	3/16	4-7/16