

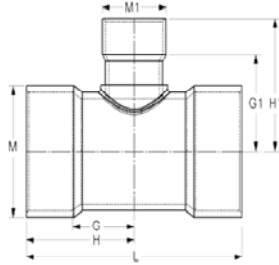
Fabricated Fittings Technical
CPVC Schedule 80 Low Pressure Fabricated Fittings



Tee SCH 80- Reducer

Socket X Socket X Socket

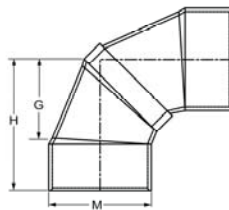
(Continued)



Part Number	Size	G	G1	H	H1	L	M	M1	Approx. Wt. (Lbs.)
3901-920C	24X20	16-3/4	18-3/16	28-3/4	28-3/16	57-1/2	26-7/16	22-1/16	351.59

90° Elbow SCH 80

Socket X Socket



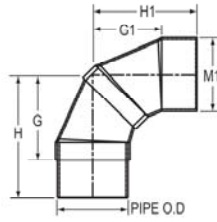
Part Number	Size	G	H	M	Approx. Wt. (Lbs.)
3906-015C	1-1/2	2-5/16	3-1/16	2-3/8	.61
3906-020C	2	2-13/16	4-5/16	2-7/8	.94
3906-025C	2-1/2	3-1/16	4-7/8	3-1/2	2.03
3906-030C	3	3-13/16	5-11/16	4-3/16	2.35
3906-040C	4	4-9/16	6-7/8	5-1/4	4.58
3906-060C	6	7-1/2	10-3/4	7-1/2	10.79
3906-080C	8	9-1/4	13-1/2	9-5/8	21.14
3906-100C	10	11-13/16	17-1/16	11-15/16	41.40
3906-120C	12	13-5/8	19-7/8	14-1/8	59.42
3906-140C	14	16	23	15-1/2	86.71
3906-160C	16	18-7/16	26-7/16	17-11/16	141.62
3906-180C	18	20-7/8	29-7/8	19-7/8	175.61
3906-200C	20	23-5/16	33-5/16	22-1/16	260.13
3906-240C	24	28-1/4	40-1/4	26-7/16	422.00



Fabricated Fittings Technical
CPVC Schedule 80 Low Pressure Fabricated Fittings

90° Street Ell SCH 80

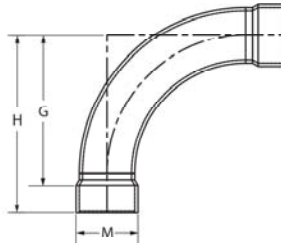
Socket X Socket



Part Number	Size	G	G1	H	H1	M	Approx. Wt. (Lbs.)
3909-015C	1-1/2	2-5/8	2-7/16	4-1/8	3-13/16	2-1/32	.63
3909-020C	2	3	2-13/16	4-5/8	4-5/16	2-7/8	.93
3909-030C	3	4-1/16	3-3/4	6-3/32	5-5/8	4-3/16	2.50
3909-040C	4	4-31/32	4-19/32	7-13/32	6-7/8	5-1/4	4.39
3909-060C	6	9	7-1/2	13	10-3/4	7-1/2	12.51
3909-080C	8	11-1/4	9-1/4	16-1/4	13-1/2	9-5/8	24.13
3909-100C	10	14-5/16	11-13/16	20-5/16	17-1/16	11-15/16	42.52
3909-120C	12	16-5/8	13-5/8	23-5/8	19-7/8	14-1/8	74.92
3909-140C	14	19-1/2	16	27-1/2	23	15-1/2	112.42
3909-160C	16	22-7/16	18-7/16	31-7/16	26-7/16	17-11/16	164.40
3909-180C	18	25-3/8	20-7/8	35-3/8	29-7/8	19-7/8	200.00
3909-200C	20	28-5/16	23-5/16	39-1/16	33-5/16	22-1/16	294.00
3909-240C	24	34-1/4	28-1/4	47-1/4	40-1/4	26-7/16	546.72

90° Elbow - Long Sweep SCH 80

Socket X Socket



Part Number	Size	G	H	M	Approx. Wt. (Lbs.)
3906-020LSCF	2	4-13/16	6-5/16	2-13/16	1.18
3906-030LSCF	3	7	9	4-1/8	2.46
3906-040LSCF	4	9	11-1/4	5-3/16	4.85
3906-060LSCF	6	13	16-1/4	7-1/2	11.76
3906-080LSCF	8	23-1/2	27-3/4	9-5/8	31.25
3906-100LSCF	10	27	32-1/4	11-15/16	54.83