



# **CPVC Schedule 80 Low Pressure Fabricated Fittings**



## **ENGINEERING GUIDE**

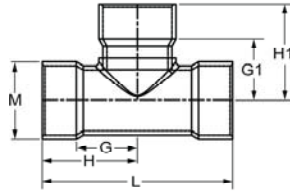
**Contact Spears® for any Information not found.**

**Fabricated Fittings Technical**  
**CPVC Schedule 80 Low Pressure Fabricated Fittings**



**Tee SCH 80**

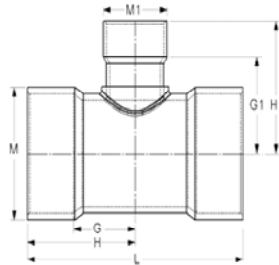
Socket X Socket X Socket



Part Number	Size	G	G1	H	H1	L	M	Approx. Wt. (Lbs.)
3901-040C	4	6-5/16	6-5/16	8-9/16	8-9/16	17-1/8	5-1/4	8.03
3901-060C	6	6-1/4	6-1/4	9-1/2	9-1/2	19	7-1/2	13.76
3901-080C	8	7-5/8	7-5/8	11-7/8	11-7/8	23-3/4	9-5/8	26.28
3901-100C	10	9	9	14-1/4	14-1/4	28-1/2	11-15/16	43.27
3901-120C	12	11-1/4	11-1/4	17-1/2	17-1/2	35	14-1/8	72.57
3901-140C	14	12-1/4	12-1/4	19-1/4	19-1/4	38-1/2	15-1/2	102.20
3901-160C	16	13	13	21	21	42	17-11/16	143.98
3901-180C	18	13-3/4	13-3/4	22-3/4	22-3/4	45-1/2	19-7/8	198.00
3901-200C	20	16-3/8	16-3/8	26-3/8	26-3/8	52-3/4	22-1/16	270.59
3901-240C	24	20-1/4	20-1/4	32-1/4	32-1/4	64-1/4	26-7/16	500.00

**Tee SCH 80- Reducer**

Socket X Socket X Socket



Part Number	Size	G	G1	H	H1	L	M	M1	Approx. Wt. (Lbs.)
3901-528C	6X2	4-5/8	5-3/16	7-7/8	6-15/16	15-3/4	7-1/2	2-13/16	9.14
3901-530C	6X3	4-3/4	5-3/4	8	8	16	7-1/2	4-1/8	10.00
3901-532C	6X4	5-1/4	6-3/4	8-1/2	9	17	7-1/2	5-3/16	11.18
3901-578C	8X2	4-11/16	6-1/8	8-15/16	7-7/8	17-7/8	9-5/8	2-13/16	14.64
3901-580C	8X3	5-3/16	6-11/16	9-7/16	8-15/16	18-7/8	9-5/8	4-1/8	15.44
3901-582C	8X4	5-3/4	7-11/16	10	9-15/16	20	9-5/8	5-3/16	17.51
3901-585C	8X6	6-3/4	8-1/16	11	11-5/16	22	9-5/8	7-1/2	22.52
3901-621C	10X2	4-3/8	7-1/8	9-5/8	8-7/8	19-1/4	11-15/16	2-13/16	23.87
3901-623C	10X3	4-7/8	7-11/16	10-1/8	9-15/16	20-1/4	11-15/16	4-1/8	23.85
3901-624C	10X4	5-3/8	8-11/16	10-5/8	10-15/16	21-1/4	11-15/16	5-3/16	26.65
3901-626C	10X6	5-7/8	9-1/16	11-1/8	12-5/16	22-1/4	11-15/16	7-1/2	30.18
3901-628C	10X8	8-1/4	9-15/16	13-1/2	14-3/16	27	11-15/16	9-5/8	38.10
3901-661C	12X2	4-3/4	8	11	9-3/4	22	14-1/8	2-13/16	37.00
3901-663C	12X3	5-1/4	8-9/16	11-1/2	10-13/16	23	14-1/8	4-1/8	37.44
3901-664C	12X4	5-3/4	9-9/16	12	11-13/16	24	14-1/8	5-3/16	42.27
3901-666C	12X6	7-1/4	9-15/16	13-1/4	13-3/16	26-1/2	14-1/8	7-1/2	47.04
3901-668C	12X8	8	10-13/16	14-1/4	15-1/16	28-1/2	14-1/8	9-5/8	52.66

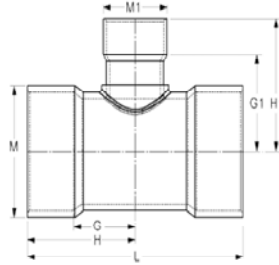


**Fabricated Fittings Technical**  
**CPVC Schedule 80 Low Pressure Fabricated Fittings**

**Tee SCH 80- Reducer**

Socket X Socket X Socket

(Continued)



Part Number	Size	G	G1	H	H1	L	M	M1	Approx. Wt. (Lbs.)
3901-670C	12X10	10-1/4	10-13/16	16-1/2	16-1/16	33	14-1/8	11-15/16	62.18
3901-691C	14X2	5-3/16	8-9/16	12-3/16	10-5/16	24-3/8	15-1/2	2-13/16	49.11
3901-693C	14X3	5-3/4	9-1/8	12-3/4	11-3/8	25-1/2	15-1/2	4-1/8	52.55
3901-694C	14X4	6-1/2	10-1/8	13-1/2	12-3/8	27	15-1/2	5-3/16	54.07
3901-696C	14X6	8-1/4	10-1/2	15-1/4	13-3/4	30-1/2	15-1/2	7-1/2	64.29
3901-698C	14X8	9-1/4	11-3/8	16-1/4	15-5/8	32-1/2	15-1/2	9-3/8	71.38
3901-700C	14X10	10-1/8	11-3/8	17-1/8	16-5/8	34-1/4	15-1/2	11-15/16	80.46
3901-702C	14X12	11	11-3/8	18	17-5/8	36	15-1/2	14-1/8	88.28
3901-751C	16X2	5-7/8	9-1/2	13-7/8	11-1/4	27-3/4	17-11/16	2-13/16	72.48
3901-753C	16X3	6-5/16	10-1/16	14-5/16	12-5/16	28-5/8	17-11/16	4-1/8	76.03
3901-754C	16X4	6-1/8	11-1/16	14-1/8	13-5/16	28-1/4	17-11/16	5-3/16	79.03
3901-756C	16X6	8-5/8	11-7/16	16-5/8	14-11/16	33-1/4	17-11/16	7-1/2	89.59
3901-758C	16X8	9-5/8	12-5/16	17-5/8	16-9/16	35-1/4	17-11/16	9-5/8	98.00
3901-760C	16X10	10-5/8	12-5/16	18-5/8	17-9/16	37-1/4	17-11/16	11-15/16	103.61
3901-762C	16X12	11-5/8	12-5/16	19-5/8	18-9/16	39-1/4	17-11/16	14-1/8	115.74
3901-764C	16X14	12-3/4	12-11/16	20-3/4	19-11/16	41-1/2	17-11/16	15-1/2	127.09
3901-784C	18X4	6-7/8	11-15/16	15-7/8	14-3/16	31-3/4	19-7/8	5-3/16	105.12
3901-786C	18X6	8-1/2	12-5/16	17-1/2	15-9/16	35	19-7/8	7-1/2	116.61
3901-788C	18X8	9-1/2	13-3/16	18-1/2	17-7/16	37	19-7/8	9-5/8	127.49
3901-790C	18X10	10-1/2	13-3/16	19-1/2	18-7/16	39	19-7/8	11-15/16	138.58
3901-792C	18X12	11-1/2	13-3/16	20-1/2	19-7/16	41	19-7/8	14-1/8	159.38
3901-794C	18X14	12-3/4	13-9/16	21-3/4	20-9/16	43-1/2	19-7/8	15-1/2	154.48
3901-796C	18X16	13-1/2	14-3/16	22-1/2	22-3/16	45	19-7/8	17-11/16	172.46
3901-814C	20X4	7-11/16	12-7/8	17-11/16	15-1/8	35-3/8	22-1/16	5-3/16	144.71
3901-816C	20X6	8-7/8	13-1/4	18-7/8	16-1/2	37-3/4	22-1/16	7-1/2	161.20
3901-818C	20X8	9-7/8	14-1/8	19-7/8	18-3/8	39-3/4	22-1/16	9-5/8	172.69
3901-820C	20X10	10-7/8	14-1/8	20-7/8	19-3/8	41-3/4	22-1/16	11-15/16	163.27
3901-822C	20X12	11-7/8	14-1/8	21-7/8	20-3/8	43-3/4	22-1/16	14-1/8	199.57
3901-824C	20X14	12-7/8	14-1/2	22-7/8	21-1/2	45-3/4	22-1/16	15-1/2	190.94
3901-826C	20X16	14	15-1/8	24	23-1/8	48	22-1/16	17-11/16	210.27
3901-828C	20X18	15	15	25	24	50	22-1/16	19-7/8	226.80
3901-904C	24X4	9	14-11/16	21	16-15/16	42	26-7/16	5-3/16	250.81
3901-906C	24X6	9-1/4	15-1/16	21-1/4	18-5/16	42-1/2	26-7/16	7-1/2	253.45
3901-908C	24X8	10-1/4	15-15/16	22-1/4	20-3/16	44-1/2	26-7/16	9-5/8	247.99
3901-910C	24X10	11-1/4	15-15/16	23-1/4	21-3/16	46-1/2	26-7/16	11-15/16	255.59
3901-912C	24X12	12-1/4	15-15/16	24-1/4	22-3/16	48-1/2	26-7/16	14-1/8	301.36
3901-914C	24X14	13-1/4	16-5/16	25-1/4	23-5/16	50-1/2	26-7/16	15-1/2	282.42
3901-916C	24X16	14-3/4	16-15/16	26-3/4	24-15/16	53-1/2	26-7/16	17-11/16	306.68
3901-918C	24X18	15-3/4	16-13/16	27-3/4	25-13/16	55-1/2	26-7/16	19-7/8	246.78

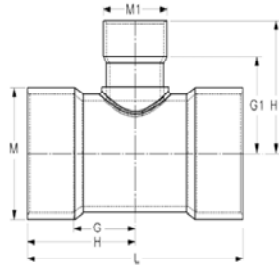
**Fabricated Fittings Technical**  
**CPVC Schedule 80 Low Pressure Fabricated Fittings**



**Tee SCH 80- Reducer**

Socket X Socket X Socket

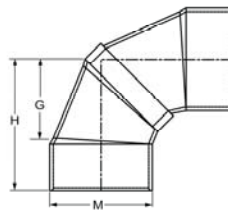
(Continued)



Part Number	Size	G	G1	H	H1	L	M	M1	Approx. Wt. (Lbs.)
3901-920C	24X20	16-3/4	18-3/16	28-3/4	28-3/16	57-1/2	26-7/16	22-1/16	351.59

**90° Elbow SCH 80**

Socket X Socket



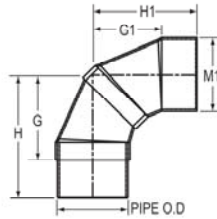
Part Number	Size	G	H	M	Approx. Wt. (Lbs.)
3906-015C	1-1/2	2-5/16	3-1/16	2-3/8	.61
3906-020C	2	2-13/16	4-5/16	2-7/8	.94
3906-025C	2-1/2	3-1/16	4-7/8	3-1/2	2.03
3906-030C	3	3-13/16	5-11/16	4-3/16	2.35
3906-040C	4	4-9/16	6-7/8	5-1/4	4.58
3906-060C	6	7-1/2	10-3/4	7-1/2	10.79
3906-080C	8	9-1/4	13-1/2	9-5/8	21.14
3906-100C	10	11-13/16	17-1/16	11-15/16	41.40
3906-120C	12	13-5/8	19-7/8	14-1/8	59.42
3906-140C	14	16	23	15-1/2	86.71
3906-160C	16	18-7/16	26-7/16	17-11/16	141.62
3906-180C	18	20-7/8	29-7/8	19-7/8	175.61
3906-200C	20	23-5/16	33-5/16	22-1/16	260.13
3906-240C	24	28-1/4	40-1/4	26-7/16	422.00



**Fabricated Fittings Technical**  
**CPVC Schedule 80 Low Pressure Fabricated Fittings**

**90° Street Ell SCH 80**

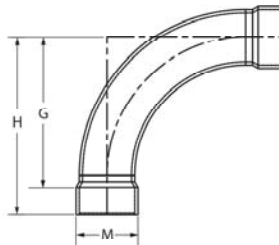
Socket X Socket



Part Number	Size	G	G1	H	H1	M	Approx. Wt. (Lbs.)
3909-015C	1-1/2	2-5/8	2-7/16	4-1/8	3-13/16	2-1/32	.63
3909-020C	2	3	2-13/16	4-5/8	4-5/16	2-7/8	.93
3909-030C	3	4-1/16	3-3/4	6-3/32	5-5/8	4-3/16	2.50
3909-040C	4	4-31/32	4-19/32	7-13/32	6-7/8	5-1/4	4.39
3909-060C	6	9	7-1/2	13	10-3/4	7-1/2	12.51
3909-080C	8	11-1/4	9-1/4	16-1/4	13-1/2	9-5/8	24.13
3909-100C	10	14-5/16	11-13/16	20-5/16	17-1/16	11-15/16	42.52
3909-120C	12	16-5/8	13-5/8	23-5/8	19-7/8	14-1/8	74.92
3909-140C	14	19-1/2	16	27-1/2	23	15-1/2	112.42
3909-160C	16	22-7/16	18-7/16	31-7/16	26-7/16	17-11/16	164.40
3909-180C	18	25-3/8	20-7/8	35-3/8	29-7/8	19-7/8	200.00
3909-200C	20	28-5/16	23-5/16	39-1/16	33-5/16	22-1/16	294.00
3909-240C	24	34-1/4	28-1/4	47-1/4	40-1/4	26-7/16	546.72

**90° Elbow - Long Sweep SCH 80**

Socket X Socket



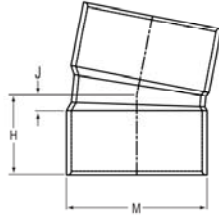
Part Number	Size	G	H	M	Approx. Wt. (Lbs.)
3906-020LSCF	2	4-13/16	6-5/16	2-13/16	1.18
3906-030LSCF	3	7	9	4-1/8	2.46
3906-040LSCF	4	9	11-1/4	5-3/16	4.85
3906-060LSCF	6	13	16-1/4	7-1/2	11.76
3906-080LSCF	8	23-1/2	27-3/4	9-5/8	31.25
3906-100LSCF	10	27	32-1/4	11-15/16	54.83

**Fabricated Fittings Technical**  
**CPVC Schedule 80 Low Pressure Fabricated Fittings**



**11-1/4° Elbow SCH 80**

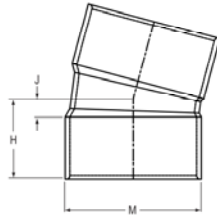
Socket X Socket



Part Number	Size	H	J	M	Approx. Wt. (Lbs.)
3911-040C	4	3	3/4	5-3/16	1.80
3911-060C	6	4-1/4	1	7-1/2	4.68
3911-080C	8	5-3/8	1-1/8	9-5/8	8.72
3911-100C	10	6-11/16	1-7/16	11-15/16	15.81
3911-120C	12	7-13/16	1-9/16	14-1/8	26.65
3911-140C	14	9	2	15-1/2	35.90
3911-180C	18	11-3/4	2-3/4	19-7/8	83.44
3911-160C	16	10-3/8	2-3/8	17-11/16	55.59
3911-200C	20	13-1/8	3-1/8	22-1/16	99.90
3911-240C	24	15-13/16	3-13/16	26-7/16	196.95

**15° Elbow SCH 80**

Socket X Socket



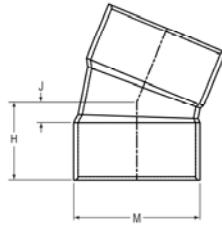
Part Number	Size	H	J	M	Approx. Wt. (Lbs.)
3918-040C	4	3-1/8	7/8	5-3/16	1.79
3918-060C	6	4-3/8	1-1/8	7-1/2	4.77
3918-080C	8	5-1/2	1-1/4	9-5/8	8.81
3918-100C	10	6-15/16	1-11/16	11-15/16	17.29
3918-120C	12	8-1/16	1-13/16	14-1/8	27.73
3918-140C	14	9-5/16	2-5/16	15-1/2	40.74
3918-160C	16	10-11/16	2-11/16	17-11/16	59.47
3918-180C	18	12-1/16	3-1/16	19-7/8	83.44
3918-200C	20	13-1/2	3-1/2	22-1/16	99.90
3918-240C	24	16-1/4	4-1/4	26-7/16	202.28



**Fabricated Fittings Technical**  
**CPVC Schedule 80 Low Pressure Fabricated Fittings**

**22-1/2° Elbow SCH 80**

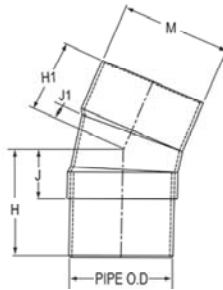
Socket X Socket



Part Number	Size	H	J	M	Approx. Wt. (Lbs.)
3916-040C	4	3-1/4	1	5-3/16	1.85
3916-060C	6	4-5/8	1-3/8	7-1/2	5.16
3916-080C	8	5-7/8	1-5/8	9-5/8	9.36
3916-100C	10	7-5/16	2-1/16	11-15/16	17.59
3916-120C	12	8-9/16	2-5/16	14-1/8	29.69
3916-140C	14	9-13/16	2-13/16	15-1/2	37.75
3916-160C	16	11-5/16	3-5/16	17-11/16	57.95
3916-180C	18	12-3/4	3-3/4	19-7/8	86.42
3916-200C	20	14-1/4	4-1/4	22-1/16	103.22
3916-240C	24	17-3/16	5-3/16	26-7/16	205.70

**22-1/2° Street Elbow SCH 80**

Socket X Socket



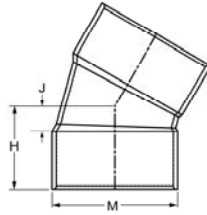
Part Number	Size	H	H1	J	J1	M	Approx. Wt. (Lbs.)
3942-060C	6	6-5/8	3-5/16	2-5/8	1/16	7-1/2	5.28
3942-080C	8	8-11/16	3-9/16	3-11/16	11/16	9-5/8	6.56
3942-100C	10	11-5/8	4-5/8	4-5/8	5/8	11-15/16	17.90
3942-120C	12	11-15/16	5-3/4	4-15/16	1/2	14-1/8	29.05
3942-140C	14	14-1/16	6-5/16	6-1/16	11/16	15-1/2	41.51
3942-160C	16	17-1/4	5-15/16	8-1/4	2-1/16	17-11/16	52.97
3942-180C	18	18-1/4	12-3/4	8-1/4	3-3/4	19-7/8	74.44
3942-200C	20	20-1/4	14-1/4	9-1/4	4-1/4	22-1/16	157.38
3942-240C	24	24-3/16	17-3/16	11-3/16	5-3/16	26-7/16	266.16

**Fabricated Fittings Technical**  
**CPVC Schedule 80 Low Pressure Fabricated Fittings**



**30° Elbow SCH 80**

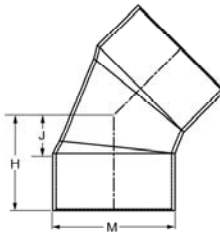
Socket X Socket



Part Number	Size	H	J	M	Approx. Wt. (Lbs.)
<a href="#">3915-040C</a>	4	3-7/16	1-3/16	5-3/16	2.15
<a href="#">3915-060C</a>	6	4-7/8	1-5/8	7-1/2	5.42
<a href="#">3915-080C</a>	8	6-3/16	1-15/16	9-5/8	10.04
<a href="#">3915-100C</a>	10	7-3/4	2-1/2	11-15/16	17.68
<a href="#">3915-120C</a>	12	9-1/16	2-13/16	14-1/8	30.39
<a href="#">3915-140C</a>	14	10-7/16	3-7/16	15-1/2	42.92
<a href="#">3915-160C</a>	16	11-15/16	3-15/16	17-11/16	64.23
<a href="#">3915-180C</a>	18	13-1/2	4-1/2	19-7/8	92.38
<a href="#">3915-200C</a>	20	15	5	22-1/16	109.88
<a href="#">3915-240C</a>	24	18-1/8	6-1/8	26-7/16	185.25

**45° Elbow SCH 80**

Socket X Socket



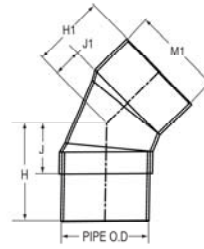
Part Number	Size	H	J	M	Approx. Wt. (Lbs.)
<a href="#">3917-020C</a>	2	2-3/4	1	2-13/16	.52
<a href="#">3917-030C</a>	3	3-5/8	1-3/8	4-1/8	1.38
<a href="#">3917-040C</a>	4	3-7/8	1-5/8	5-3/16	2.04
<a href="#">3917-060C</a>	6	5-1/2	2-1/4	7-1/2	5.44
<a href="#">3917-080C</a>	8	6-15/16	2-11/16	9-5/8	11.43
<a href="#">3917-100C</a>	10	8-11/16	3-7/16	11-15/16	19.37
<a href="#">3917-120C</a>	12	10-1/8	3-7/8	14-1/8	32.40
<a href="#">3917-140</a>	14	11-9/16	4-9/16	15-1/2	41.24
<a href="#">3917-160C</a>	16	13-5/16	5-5/16	17-11/16	64.66
<a href="#">3917-180C</a>	18	15	6	19-7/8	88.48
<a href="#">3917-200C</a>	20	16-3/4	6-3/4	22-1/16	124.66
<a href="#">3917-240C</a>	24	20-3/16	8-3/16	26-7/16	207.66





**Fabricated Fittings Technical**  
**CPVC Schedule 80 Low Pressure Fabricated Fittings**

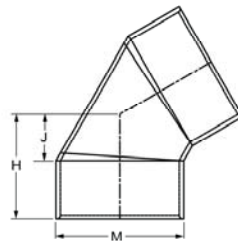
**45° Street Elbow SCH 80**



Part Number	Size	H	H1	J	J1	M	Approx. Wt. (Lbs.)
3927-015C	1-1/2	2-13/16	1-13/16	1-3/16	7/16	2-3/8	.48
3927-020C	2	3-1/8	2-1/8	1-3/8	5/8	2-7/8	.66
3927-030C	3	4-1/8	2-7/8	1-7/8	7/8	4	1.65
3927-040C	4	4-11/16	3-5/16	2-3/16	1-1/16	5-1/4	3.03
3927-080C	8	9-11/16	6-15/16	4-11/16	2-11/16	9-5/8	13.87
3927-100C	10	11-15/16	8-11/16	5-15/16	3-7/16	11-15/16	26.25
3927-120C	12	13-7/8	10-1/8	6-7/8	3-7/8	14-1/8	45.87
3927-140C	14	16-1/16	11-9/16	8-1/16	4-9/16	15-1/2	64.42
3927-160C	16	18-5/16	13-5/16	9-5/16	5-5/16	17-11/16	90.40
3927-180C	18	20-1/2	15	10-1/2	6	19-7/8	131.11
3927-060C	6	7-3/4	5-1/2	3-3/4	2-1/4	7-1/2	7.42
3927-200C	20	22-3/4	16-3/4	11-3/4	6-3/4	22-1/16	153.18
3927-240C	24	27-3/16	20-3/16	14-3/16	8-3/16	26-7/16	123.29

**60° Elbow SCH 80**

Socket X Socket



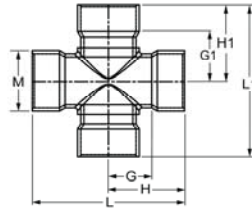
Part Number	Size	H	J	M	Approx. Wt. (Lbs.)
3924-040C	4	4-5/16	2-1/16	5-3/16	2.31
3924-060C	6	6-1/8	2-7/8	7-1/2	5.92
3924-080C	8	7-3/4	3-1/2	9-5/8	10.94
3924-100C	10	9-11/16	4-7/16	11-15/16	21.91
3924-120C	12	11-5/16	5-1/16	14-1/8	31.43
3924-140C	14	12-15/16	5-15/16	15-1/2	88.89
3924-160C	16	14-13/16	6-13/16	17-11/16	126.08
3924-180C	18	16-3/4	7-3/4	19-7/8	175.81
3924-200C	20	26-5/8	16-5/8	22-1/16	247.63
3924-240C	24	32-1/8	20-1/8	26-7/16	415.20

**Fabricated Fittings Technical**  
**CPVC Schedule 80 Low Pressure Fabricated Fittings**



**Cross SCH 80**

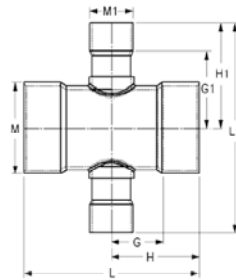
Socket X Socket X Socket X Socket



Part Number	Size	G	G1	H	H1	L	L1	M	Approx. Wt. (Lbs.)
<a href="#">3920-060C</a>	6	6-1/4	6-1/4	9-1/2	9-1/2	19	19	7-1/2	16.93
<a href="#">3920-080C</a>	8	7-5/8	7-5/8	11-7/8	11-7/8	23-3/4	23-3/4	9-5/8	30.81
<a href="#">3920-100C</a>	10	9	9	14-1/4	14-1/4	28-1/2	28-1/2	11-15/16	54.55
<a href="#">3920-120C</a>	12	11-1/4	11-1/4	17-1/2	17-1/2	35	35	14-1/8	96.33
<a href="#">3920-140C</a>	14	12-1/4	12-1/4	19-1/4	19-1/4	38-1/2	38-1/2	15-1/2	127.64
<a href="#">3920-160C</a>	16	13	13	21	21	42	42	17-11/16	175.70
<a href="#">3920-180C</a>	18	13-3/4	13-3/4	22-3/4	22-3/4	45-1/2	45-1/2	19-7/8	233.48
<a href="#">3920-200C</a>	20	16-3/8	16-3/8	26-3/8	26-3/8	52-3/4	52-3/4	22-1/16	249.75
<a href="#">3920-240C</a>	24	20-1/4	20-1/4	32-1/4	32-1/4	64-1/2	64-1/2	26-7/16	355.98

**Cross SCH 80- Reducer**

Socket X Socket X Socket X Socket



Part Number	Size	G	G1	H	H1	L	L1	M	M1	Approx. Wt. (Lbs.)
<a href="#">3920-420C</a>	4X2	3-7/8	4-1/4	6-1/8	6	12-1/4	12	5-3/16	2-13/16	4.14
<a href="#">3920-422C</a>	4X3	5-1/4	4-13/16	7-1/2	7-1/16	15	14-1/8	5-3/16	4-1/8	5.39
<a href="#">3920-528C</a>	6X2	4-5/8	5-3/16	7-7/8	6-15/16	15-3/4	13-7/8	7-1/2	2-13/16	12.00
<a href="#">3920-530C</a>	6X3	4-3/4	5-3/4	8	8	16	16	7-1/2	4-1/8	10.24
<a href="#">3920-532C</a>	6X4	5-1/4	6-3/4	8-1/2	9	17	18	7-1/2	5-3/16	12.14
<a href="#">3920-578C</a>	8X2	4-11/16	6-1/8	8-15/16	7-7/8	17-7/8	15-3/4	9-5/8	2-13/16	14.84
<a href="#">3920-580C</a>	8X3	5-3/16	6-11/16	9-7/16	8-15/16	18-7/8	17-7/8	9-5/8	4-1/8	16.96
<a href="#">3920-582C</a>	8X4	5-3/4	7-11/16	10	9-15/16	20	19-7/8	9-5/8	5-3/16	20.46
<a href="#">3920-585C</a>	8X6	6-3/4	8-1/16	11	11-5/16	22	22-5/8	9-5/8	7-1/2	24.47
<a href="#">3920-621C</a>	10X2	4-3/8	7-1/8	9-5/8	8-7/8	19-1/4	17-3/4	11-15/16	2-13/16	24.57
<a href="#">3920-623C</a>	10X3	4-7/8	7-11/16	10-1/8	9-15/16	20-1/4	19-7/8	11-15/16	4-1/8	28.98
<a href="#">3920-624C</a>	10X4	5-3/8	8-11/16	10-5/8	10-15/16	21-1/4	21-7/8	11-15/16	5-3/16	28.01
<a href="#">3920-626C</a>	10X6	5-7/8	9-1/16	11-1/8	12-5/16	22-1/4	24-5/8	11-15/16	7-1/2	36.35
<a href="#">3920-628C</a>	10X8	8-1/4	9-15/16	13-1/2	14-3/16	27	28-3/8	11-15/16	9-5/8	47.27
<a href="#">3920-661C</a>	12X2	4-3/4	8	11	9-3/4	22	19-1/2	14-1/8	2-13/16	35.55
<a href="#">3920-663C</a>	12X3	5-1/4	8-9/16	11-1/2	10-13/16	23	21-5/8	14-1/8	4-1/8	45.27
<a href="#">3920-664C</a>	12X4	5-3/4	9-9/16	12	11-13/16	24	23-5/8	14-1/8	5-3/16	42.59
<a href="#">3920-666C</a>	12X6	7-1/4	9-15/16	13-1/4	13-3/16	26-1/2	26-3/8	14-1/8	7-1/2	54.26

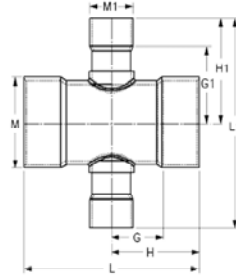


**Fabricated Fittings Technical**  
**CPVC Schedule 80 Low Pressure Fabricated Fittings**

**Cross SCH 80- Reducer**

Socket X Socket X Socket X Socket

(Continued)



Part Number	Size	G	G1	H	H1	L	L1	M	M1	Approx. Wt. (Lbs.)
3920-668C	12X8	8	10-13/16	14-1/4	15-1/16	28-1/2	30-1/8	14-1/8	9-5/8	58.59
3920-670C	12X10	10-1/4	10-13/16	16-1/2	16-1/16	33	32-1/8	14-1/8	11-15/16	80.00
3920-691C	14X2	5-3/16	8-9/16	12-3/16	10-5/16	24-3/8	20-5/8	15-1/2	2-13/16	53.24
3920-693C	14X3	5-3/4	9-1/8	12-3/4	11-3/8	25-1/2	22-3/4	15-1/2	4-1/8	56.21
3920-694C	14X4	6-1/2	10-1/8	13-1/2	12-3/8	27	24-3/8	15-1/2	5-3/16	61.76
3920-696C	14X6	8-1/4	10-1/2	15-1/4	13-3/4	30-1/2	27-1/2	15-1/2	7-1/2	72.85
3920-698C	14X8	9-1/4	11-3/8	16-1/4	15-5/8	32-1/2	31-1/4	15-1/2	9-5/8	84.42
3920-700C	14X10	10-1/8	11-3/8	17-1/8	16-5/8	34-1/4	33-1/4	15-1/2	11-15/16	90.19
3920-702C	14X12	11	11-3/8	18	17-5/8	36	35-1/4	15-1/2	14-1/8	117.29
3920-751C	16X2	5-7/8	9-1/2	13-7/8	11-1/4	27-3/4	22-1/4	17-11/16	2-13/16	77.67
3920-753C	16X3	6-5/16	10-1/16	14-5/16	12-5/16	28-5/8	24-5/8	17-11/16	4-1/8	81.65
3920-754C	16X4	6-1/8	11-1/16	14-1/8	13-5/16	28-1/4	26-5/8	17-11/16	5-3/16	80.84
3920-756C	16X6	8-5/8	11-7/16	16-5/8	14-11/16	33-1/4	29-3/8	17-11/16	7-1/2	98.57
3920-758C	16X8	9-5/8	12-5/16	17-5/8	16-9/16	35-1/4	33-1/8	17-11/16	9-5/8	111.25
3920-760C	16X10	10-5/8	12-5/16	18-5/8	17-9/16	37-1/4	35-1/8	17-11/16	11-15/16	125.38
3920-762C	16X12	11-5/8	12-5/16	19-5/8	18-9/16	39-1/4	37-1/8	17-11/16	14-1/8	138.83
3920-764C	16X14	12-3/4	12-11/16	20-3/4	19-11/16	41-1/2	39-3/8	17-11/16	15-1/2	129.51
3920-784C	18X4	6-7/8	11-15/16	15-7/8	14-3/16	31-3/4	28-3/8	19-7/8	5-3/16	106.93
3920-786C	18X6	8-1/2	12-5/16	17-1/2	15-9/16	35	31-1/8	19-7/8	7-1/2	121.05
3920-788C	18X8	9-1/2	13-3/16	18-1/2	17-7/16	37	34-7/8	19-7/8	9-5/8	133.90
3920-790C	18X10	10-1/2	13-3/16	19-1/2	18-7/16	39	36-7/8	19-7/8	11-15/16	149.71
3920-792C	18X12	11-1/2	13-3/16	20-1/2	19-7/16	41	38-7/8	19-7/8	14-1/8	.00
3920-794C	18X14	12-3/4	13-9/16	21-3/4	20-9/16	43-1/2	41-1/8	19-7/8	15-1/2	165.77
3920-796C	18X16	13-1/2	14-3/16	22-1/2	22-3/16	45	44-3/8	19-7/8	17-11/16	172.46
3920-814C	20X4	7-11/16	12-7/8	17-11/16	15-1/8	35-3/8	30-1/4	22-1/16	5-3/16	148.90
3920-816C	20X6	8-7/8	13-1/4	18-7/8	16-1/2	37-3/4	33	22-1/16	7-1/2	165.15
3920-818C	20X8	9-7/8	14-1/8	19-7/8	18-3/8	39-3/4	36-3/4	22-1/16	9-5/8	180.23
3920-820C	20X10	10-7/8	14-1/8	20-7/8	19-3/8	41-3/4	38-3/4	22-1/16	11-15/16	197.78
3920-822C	20X12	11-7/8	14-1/8	21-7/8	20-3/8	43-3/4	40-3/4	22-1/16	14-1/8	217.92
3920-824C	20X14	12-7/8	14-1/2	22-7/8	21-1/2	45-3/4	43	22-1/16	15-1/2	190.94
3920-826C	20X16	14	15-1/8	24	23-1/8	48	46-1/4	22-1/16	17-11/16	210.27
3920-828C	20X18	15	15	25	24	50	48	22-1/16	19-7/8	226.80
3920-904C	24X4	9	14-11/16	21	16-15/16	42	33-7/16	26-7/16	5-3/16	252.62
3920-906C	24X6	9-1/4	15-1/16	21-1/4	18-5/16	42-1/2	36-5/8	26-7/16	7-1/2	257.40
3920-908C	24X8	10-1/4	15-15/16	22-1/4	20-3/16	44-1/2	40-3/8	26-7/16	9-5/8	275.67
3920-910C	24X10	11-1/4	15-15/16	23-1/4	21-3/16	46-1/2	42-3/8	26-7/16	11-15/16	296.39
3920-912C	24X12	12-1/4	15-15/16	24-1/4	22-3/16	48-1/2	44-3/8	26-7/16	14-1/8	325.12
3920-914C	24X14	13-1/4	16-5/16	25-1/4	23-5/16	50-1/2	46-5/8	26-7/16	15-1/2	282.42
3920-916C	24X16	14-3/4	16-15/16	26-3/4	24-15/16	53-1/2	49-7/8	26-7/16	17-11/16	306.44

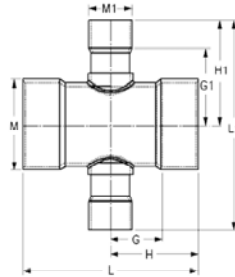
**Fabricated Fittings Technical**  
**CPVC Schedule 80 Low Pressure Fabricated Fittings**



**Cross SCH 80- Reducer**

Socket X Socket X Socket X Socket

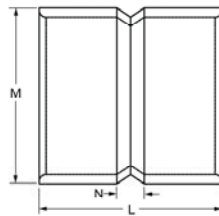
(Continued)



Part Number	Size	G	G1	H	H1	L	L1	M	M1	Approx. Wt. (Lbs.)
3920-918C	24X18	15-3/4	16-13/16	27-3/4	25-13/16	55-1/2	51-5/8	26-7/16	19-7/8	246.78
3920-920C	24X20	16-3/4	18-3/16	28-3/4	28-3/16	57-1/2	56-3/8	26-7/16	22-1/16	351.59

**Coupling**

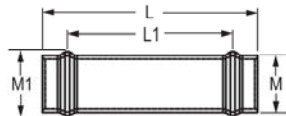
Socket X Socket



Part Number	Size	L	M	N	Approx. Wt. (Lbs.)
3929-020C	2	4-3/4	2-13/16	1-1/4	.46
3929-030C	3	5-3/4	4-1/8	1-1/4	1.18
3929-040C	4	6-1/2	5-3/16	2	1.91
3929-060C	6	8-1/2	7-1/2	2	4.71
3929-080C	8	10-3/8	9-5/8	1-7/8	8.70
3929-100C	10	13-1/8	11-15/16	2-5/8	15.68
3929-120C	12	15-1/4	14-1/8	2-3/4	25.85
3929-140C	14	16	15-1/2	2	33.33
3929-160C	16	19-3/4	17-11/16	3-3/4	54.79
3929-180C	18	22	19-7/8	4	72.88
3929-200C	20	25-3/4	22-1/16	5-3/4	102.09
3929-240C	24	29-1/4	26-7/16	5-1/4	167.66

**Repair Coupling**

Gasket X Gasket



Part Number	Size	L	L1	M	M1	Approx. Wt. (Lbs.)
3928-040C	4	19-1/2	15	5-3/16	5-3/4	6.53
3928-060C	6	23	18-1/4	7-1/2	8-1/8	13.41

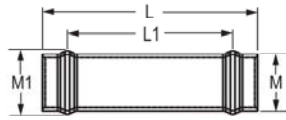


**Fabricated Fittings Technical**  
**CPVC Schedule 80 Low Pressure Fabricated Fittings**

**Repair Coupling**

(Continued)

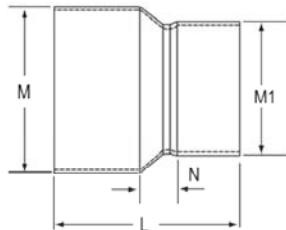
Gasket X Gasket



Part Number	Size	L	L1	M	M1	Approx. Wt. (Lbs.)
3928-080C	8	26-1/8	19	9-5/8	10-3/8	23.42
3928-100C	10	28	21-1/4	11-15/16	13-1/8	37.92
3928-120C	12	29	21-3/8	14-1/8	15-3/8	53.28
3928-140C	14	30	21	15-1/2	17-1/4	68.61
3928-160C	16	31	22-1/4	17-11/16	18-7/8	71.10
3928-180C	18	32	22-5/8	19-7/8	21-7/8	127.70
3928-200C	20	32	23-1/2	22-1/16	24-1/16	160.38
3928-240C	24	32	23-1/2	26-7/16	28-13/16	236.00

**Reducer Coupling- SCH 80**

Socket X Socket



Part Number	Size	L	M	M1	N	Approx. Wt. (Lbs.)
3929-338C	3X2	6	3-15/16	2-13/16	2	.68
3929-420C	4X2	9-1/4	5-1/8	2-13/16	5-1/4	1.65
3929-422C	4X3	6-7/8	5-1/8	4-1/8	2-3/8	1.45
3929-528C	6X2	14-5/8	7-5/16	2-13/16	9-5/8	3.79
3929-530C	6X3	12-1/4	7-5/16	4-1/8	6-3/4	4.17
3929-532C	6X4	8-7/8	7-5/16	5-3/16	3-3/8	3.35
3929-578C	8X2	20-3/8	9-1/2	2-13/16	14-3/8	4.59
3929-580C	8X3	18	9-1/2	4-1/8	11-1/2	8.37
3929-582C	8X4	14-5/8	9-1/2	5-3/16	8-1/8	7.75
3929-585C	8X6	11-1/8	9-1/2	7-1/2	3-5/8	6.82
3929-624C	10X4	21-1/8	11-3/4	5-3/16	13-5/8	19.07
3929-626C	10X6	17-5/8	11-3/4	7-1/2	9-1/8	15.00
3929-628C	10X8	13-3/8	11-3/4	9-5/8	3-7/8	11.31
3929-664C	12X4	28-3/8	13-15/16	5-3/16	19-7/8	29.44
3929-666C	12X6	24-7/8	13-15/16	7-1/2	15-3/8	29.92
3929-668C	12X8	20-5/8	13-15/16	9-5/8	10-1/8	27.00
3929-670C	12X10	16-3/8	13-15/16	11-15/16	4-7/8	20.77
3929-694C	14X4	30-1/8	15-3/16	5-3/16	20-7/8	34.71
3929-696C	14X6	26-5/8	15-3/16	7-1/2	16-3/8	31.45

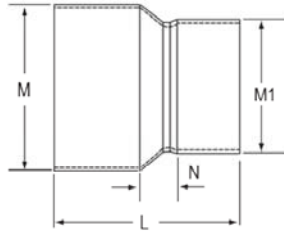
**Fabricated Fittings Technical**  
**CPVC Schedule 80 Low Pressure Fabricated Fittings**



**Reducer Coupling- SCH 80**

(Continued)

Socket X Socket



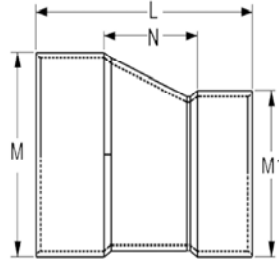
Part Number	Size	L	M	M1	N	Approx. Wt. (Lbs.)
3929-698C	14X8	22-3/8	15-3/16	9-5/8	11-1/8	27.68
3929-700C	14X10	18-1/8	15-3/16	11-15/16	5-7/8	25.24
3929-702C	14X12	17-3/4	15-3/8	14-1/8	4-1/2	29.29
3929-754C	16X4	38	17-3/8	5-3/16	27-3/4	53.88
3929-756C	16X6	34-1/2	17-3/8	7-1/2	23-1/4	54.03
3929-758C	16X8	30-1/4	17-3/8	9-5/8	18	49.55
3929-760C	16X10	26	17-3/8	11-15/16	12-3/4	45.61
3929-762C	16X12	20-1/4	17-3/8	14-1/8	6	35.57
3929-764C	16X14	20-1/4	17-1/2	15-1/2	5-1/4	43.94
3929-786C	18X6	43-7/8	19-11/16	7-1/2	31-5/8	104.71
3929-788C	18X8	39-5/8	19-11/16	9-5/8	26-3/8	100.55
3929-790C	18X10	35-3/8	19-11/16	11-15/16	21-1/8	89.53
3929-792C	18X12	29-5/8	19-11/16	14-1/8	14-3/8	76.67
3929-794C	18X14	29-5/8	19-11/16	15-1/2	13-5/8	86.99
3929-796C	18X16	23	19-11/16	17-11/16	6	63.70
3929-816C	20X6	54-1/2	21-7/8	7-1/2	41-1/4	159.69
3929-818C	20X8	50-1/4	21-7/8	9-5/8	36	155.53
3929-820C	20X10	46	21-7/8	11-15/16	30-3/4	143.72
3929-822C	20X12	46	21-7/8	11-15/16	30-3/4	138.43
3929-824C	20X14	40-1/4	21-7/8	15-1/2	23-1/4	145.49
3929-826C	20X16	33-5/8	21-7/8	17-11/16	15-5/8	112.40
3929-828C	20X18	25-1/2	21-7/8	19-7/8	6-1/2	88.55
3929-906C	24X6	68	26-1/16	7-1/2	52-3/4	251.98
3929-908C	24X8	63-3/4	26-1/16	9-5/8	47-1/2	247.82
3929-910C	24X10	59-1/2	26-1/16	11-15/16	42-1/4	242.10
3929-912C	24X12	53-3/4	26-1/16	14-1/8	35-1/2	230.72
3929-914C	24X14	53-3/4	26-1/16	15-1/2	34-3/4	237.78
3929-916C	24X16	47-1/8	26-1/16	17-11/16	27-1/8	214.52
3929-918C	24X18	39	26-1/16	19-7/8	18	176.32
3929-920C	24X20	30-5/8	26-1/16	22-1/16	8-5/8	128.81



**Fabricated Fittings Technical**  
**CPVC Schedule 80 Low Pressure Fabricated Fittings**

**Eccentric Reducer Coupling-  
 SCH 80**

Socket X Socket



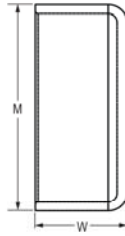
Part Number	Size	L	M	M1	N	Approx. Wt. (Lbs.)
3929-338CE	3X2	8-1/8	3-15/16	2-13/16	4-1/8	1.07
3929-420CE	4X2	12-3/8	5-1/8	2-13/16	8-5/8	2.82
3929-422CE	4X3	8-3/4	5-1/8	4-1/8	4-1/4	1.90
3929-528CE	6X2	20	7-5/16	2-7/8	15-1/4	5.39
3929-530CE	6X3	16-3/8	7-5/16	4-1/8	10-7/8	5.03
3929-532CE	6X4	11-1/8	7-5/16	5-3/16	5-5/8	3.74
3929-533CE	6X5	11-1/4	7-3/8	6-5/16	5	4.77
3929-580CE	8X3	26-1/8	9-1/2	4-1/8	19-5/8	12.51
3929-582CE	8X4	20-7/8	9-1/2	5-3/16	14-3/8	11.11
3929-585CE	8X6	15-1/4	9-1/2	7-1/2	7-3/4	9.77
3929-624CE	10X4	32	11-3/4	5	24-1/2	23.06
3929-626CE	10X6	26-3/8	11-3/4	7-1/2	17-7/8	21.55
3929-628CE	10X8	18-1/16	11-3/4	9-5/8	8-9/16	16.14
3929-664CE	12X4	43-1/2	13-15/16	5-3/16	35	47.19
3929-666CE	12X6	37-7/8	13-15/16	7-1/2	28-3/8	40.39
3929-668CE	12X8	29-9/16	13-15/16	9-5/8	19-1/16	34.85
3929-670CE	12X10	20-5/8	13-15/16	11-15/16	9-1/8	26.05
3929-702CE	14X12	20-1/8	15-3/8	14-1/8	6-7/8	35.17
3929-756CE	16X6	54-1/4	17-1/2	7-1/2	43	81.83
3929-758CE	16X8	45-15/16	17-1/2	9-5/8	33-11/16	77.09
3929-760CE	16X10	37	17-1/2	11-15/16	23-3/4	67.18
3929-762CE	16X12	33	17-1/2	14-1/8	18-3/4	71.77
3929-764CE	16X14	24-5/8	17-1/2	15-1/2	9-5/8	54.62
3929-786CE	18X6	69-1/4	19-11/16	7-1/2	57	59.26
3929-788CE	18X8	60-15/16	19-11/16	9-5/8	47-11/16	148.97
3929-790CE	18X10	52	19-11/16	11-15/16	37-3/4	124.66
3929-792CE	18X12	48	19-11/16	14-1/8	32-3/4	139.09
3929-794CE	18X14	39-5/8	19-11/16	15-1/2	23-5/8	111.05
3929-796CE	18X16	28-5/8	19-11/16	17-11/16	11-5/8	85.64

Fabricated Fittings Technical  
**CPVC Schedule 80 Low Pressure Fabricated Fittings**



**Cap SCH 80**

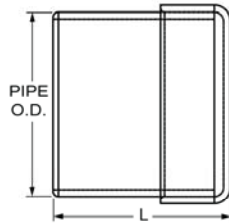
Socket



Part Number	Size	M	W	Approx. Wt. (Lbs.)
<a href="#">3947-040C</a>	4	4-7/8	2-1/4	.33
<a href="#">3947-060C</a>	6	7-1/4	3-1/4	1.45
<a href="#">3947-080C</a>	8	9-11/16	3-3/4	3.59
<a href="#">3947-120C</a>	12	13-9/16	4-1/8	5.83
<a href="#">3947-100C</a>	10	11-9/16	3-3/4	3.85
<a href="#">3947-140C</a>	14	14-13/16	5-3/4	8.14
<a href="#">3947-160C</a>	16	17-1/8	5-1/2	10.57
<a href="#">3947-180C</a>	18	18-7/8	5-7/8	46.93
<a href="#">3947-200C</a>	20	21-1/16	6-3/8	35.27
<a href="#">3947-240C</a>	24	25-3/16	7	30.17

**Spigot Plug SCH 80**

Spigot



Part Number	Size	L	Approx. Wt. (Lbs.)
<a href="#">3949-060C</a>	6	7-1/4	4.73
<a href="#">3949-080C</a>	8	8-1/4	9.40
<a href="#">3949-100C</a>	10	9-3/4	14.53
<a href="#">3949-120C</a>	12	11-1/8	22.50
<a href="#">3949-160C</a>	16	14-1/2	43.47