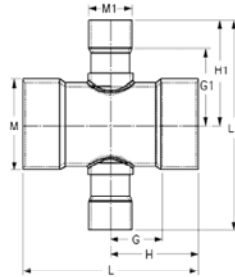


Fabricated Fittings Technical
CPVC Schedule 80 DWV Fabricated Fittings



Cross SCH 80- Reducer

Socket X Socket X Socket X Socket

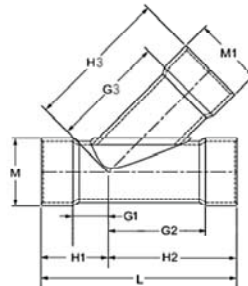


(Continued)

Part Number	Size	G	G1	H	H1	L	L1	M	M1	Approx. Wt. (Lbs.)
3920-920C	24X20	16-3/4	18-3/16	28-3/4	28-3/16	57-1/2	56-3/8	26-7/16	22-1/16	351.59

Wye SCH 80

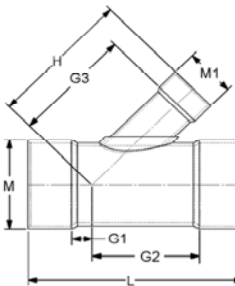
Socket X Socket X Socket



Part Number	Size	G1	G2	G3	H1	H2	H3	L	M	M1	Approx. Wt. (Lbs.)
3975-020C	2	3-15/16	6-5/16	5-5/8	5-7/16	7-13/16	7-3/16	13-1/4	2-7/8	2-7/8	2.20
3975-030C	3	4-7/8	8-3/8	8-3/8	6-3/4	10-1/4	10-1/4	17	4-3/16	4-3/16	5.77
3975-040C	4	4-11/16	9-3/16	9-3/16	6-15/16	11-7/16	11-7/16	18-3/8	5-3/16	5-3/16	7.11
3975-060C	6	4-15/16	11-9/16	12-5/8	8-3/16	14-13/16	15-7/8	23	7-1/2	7-1/2	18.28
3975-080C	8	5-1/16	13-11/16	15-7/8	9-5/16	17-15/16	20-1/8	27-1/4	9-5/8	9-5/8	33.94
3975-100C	10	6-1/2	17-1/4	18-7/8	11-3/4	22-1/2	24-1/8	34-1/4	11-15/16	11-15/16	59.66
3975-120C	12	7-1/8	19-7/8	21-13/16	13-3/8	26-1/8	28-1/16	39-1/2	14-1/8	14-1/8	90.52
3975-140C	14	9-13/16	23-13/16	23-13/16	16-13/16	30-13/16	30-13/16	47-5/8	15-1/2	15-1/2	143.43
3975-180C	18	10	28	29-3/8	19	37	38-3/8	56	19-7/8	19-7/8	262.24
3975-160C	16	10-1/8	26-1/8	26-1/8	18-1/8	34-1/8	34-1/8	52-1/4	17-11/16	17-11/16	184.05
3975-200C	20	11-5/8	31-5/8	31-5/8	21-5/8	41-5/8	41-5/8	63-1/4	22-1/16	22-1/16	355.72
3975-240C	24	14-1/4	38-1/4	38-1/4	26-1/4	50-1/4	50-1/4	76-1/2	26-7/16	26-7/16	619.74

Wye SCH 80- Reducer

Socket X Socket X Socket



Part Number	Size	G1	G2	G3	H1	H2	H3	L	M	M1	Approx. Wt. (Lbs.)
3975-338C	3X2	4	7-1/2	7-1/16	5-7/8	9-3/8	8-9/16	15-1/4	4-3/16	2-7/8	4.44
3975-420C	4X2	2-1/4	6-3/4	7-13/16	4-1/2	9	9-9/16	13-1/2	5-3/16	2-13/16	5.08
3975-422C	4X3	4-13/16	9-5/16	9	7-1/16	11-9/16	10-15/16	18-5/8	5-1/4	4-3/16	8.57

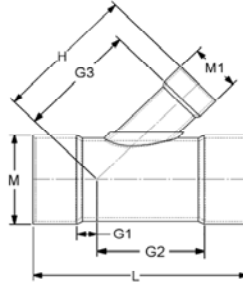


Fabricated Fittings Technical
CPVC Schedule 80 DWV Fabricated Fittings

Wye SCH 80- Reducer

Socket X Socket X Socket

(Continued)



Part Number	Size	G1	G2	G3	H1	H2	H3	L	M	M1	Approx. Wt. (Lbs.)
3975-528C	6X2	1-15/16	8-9/16	9-3/16	5-3/16	11-13/16	10-15/16	17	7-1/2	2-13/16	10.11
3975-530C	6X3	2-15/16	9-9/16	10-5/16	6-3/16	12-13/16	12-9/16	19	7-1/2	4-1/8	11.01
3975-532C	6X4	3-15/16	10-9/16	10-9/16	7-3/16	13-13/16	12-13/16	21	7-1/2	5-3/16	12.97
3975-578C	8X2	7/8	9-1/2	10-1/2	5-1/8	13-3/4	12-1/4	18-7/8	9-5/8	2-13/16	16.51
3975-580C	8X3	1-15/16	10-9/16	11-5/8	6-3/16	14-13/16	13-7/8	21	9-5/8	4-1/8	19.11
3975-582C	8X4	2-15/16	11-9/16	11-7/8	7-3/16	15-13/16	14-1/8	23	9-5/8	5-3/16	21.70
3975-585C	8X6	4-15/16	13-9/16	13-15/16	9-3/16	17-13/16	17-3/16	27	9-5/8	7-1/2	27.80
3975-621C	10X2	1/4	10-1/2	11-7/8	5	15-3/4	13-5/8	20-3/4	11-15/16	2-13/16	25.22
3975-623C	10X3	3/4	11-1/2	13	6	16-3/4	15-1/4	22-3/4	11-15/16	4-1/8	33.43
3975-624C	10X4	1-3/4	12-1/2	13-1/4	7	17-3/4	15-1/2	24-3/4	11-15/16	5-3/16	32.12
3975-626C	10X6	3-3/4	14-1/2	15-5/16	9	19-3/4	18-9/16	28-3/4	11-15/16	7-1/2	39.64
3975-628C	10X8	5-1/4	16	17-1/4	10-1/2	21-1/4	21-1/2	31-3/4	11-15/16	9-5/8	48.93
3975-661C	12X2	1-5/16	11-7/16	13-3/16	4-15/16	17-11/16	14-15/16	22-5/8	14-1/8	2-13/16	38.92
3975-663C	12X3	1/8	4-1/8	14-5/16	6-3/8	19-1/8	16-9/16	25-1/2	14-1/8	4-1/8	44.58
3975-664C	12X4	5/8	13-3/8	14-9/16	6-7/8	19-5/8	16-13/16	26-1/2	14-1/8	5-3/16	43.06
3975-666C	12X6	2-5/8	15-3/8	16-5/8	8-7/8	21-5/8	19-7/8	30-1/2	14-1/8	7-1/2	56.88
3975-668C	12X8	4-1/4	17	18-9/16	10-1/2	23-1/4	22-13/16	33-3/4	14-1/8	9-5/8	67.10
3975-670C	12X10	5-3/4	18-1/2	20-3/16	12	24-3/4	25-7/16	36-3/4	14-1/8	11-15/16	80.24
3975-691C	14X2	1/4	13-3/4	13-15/16	6-3/4	20-3/4	15-11/16	27-1/2	15-1/2	2-13/16	48.50
3975-693C	14X3	1/2	14-1/2	15-1/16	7-1/2	21-1/2	17-5/16	29	15-1/2	4-1/8	52.61
3975-694C	14X4	1-1/4	15-1/4	15-5/16	8-1/4	22-1/4	17-9/16	30-1/2	15-1/2	5-3/16	62.77
3975-696C	14X6	2	16	17-3/8	9	23	20-5/8	32	15-1/2	7-1/2	67.18
3975-698C	14X8	4-1/4	18-1/4	19-5/16	11-1/4	25-1/4	23-9/16	36-1/2	15-1/2	9-5/8	87.66
3975-700C	14X10	5-3/4	19-3/4	20-15/16	12-3/4	26-3/4	26-3/16	39-1/2	15-1/2	11-15/16	102.01
3975-702C	14X12	7-1/4	21-1/4	22-9/16	14-1/4	28-1/4	28-13/16	42-1/2	15-1/2	14-1/8	120.86
3975-751C	16X2	7/8	15-1/8	15-1/4	7-1/8	23-1/8	17	30-1/4	17-11/16	2-13/16	72.11
3975-753C	16X3	1/8	15-7/8	16-3/8	7-7/8	23-7/8	18-5/8	31-3/4	17-11/16	4-1/8	77.47
3975-754C	16X4	1-1/8	17-1/8	16-5/8	9-1/8	25-1/8	18-7/8	34-1/4	17-11/16	5-3/16	95.01
3975-756C	16X6	1-5/8	17-5/8	18-11/16	9-5/8	25-5/8	21-15/16	35-1/4	17-11/16	7-1/2	101.08
3975-758C	16X8	3-5/8	19-5/8	20-5/8	11-5/8	27-5/8	24-7/8	39-1/4	17-11/16	9-5/8	11.26
3975-760C	16X10	5-1/8	21-1/8	22-1/4	13-1/8	29-1/8	27-1/2	42-1/4	17-11/16	11-15/16	123.89
3975-762C	16X12	6-1/2	22-1/2	23-7/8	14-1/2	30-1/2	30-1/8	45	17-11/16	14-1/8	153.21
3975-764C	16X14	7-7/8	23-7/8	25-1/8	15-7/8	31-7/8	32-1/8	47-3/4	17-11/16	15-1/2	168.57
3975-784C	18X4	0	18	17-7/8	9	27	20-1/8	36	19-7/8	5-3/16	110.02
3975-786C	18X6	3/8	18-9/16	20-1/8	9-3/8	27-9/16	23-3/8	36-15/16	19-7/8	7-1/2	128.08
3975-788C	18X8	3	21	21-7/8	12	30	26-1/8	42	19-7/8	9-5/8	149.77
3975-790C	18X10	4-1/2	22-1/2	23-1/2	13-1/2	31-1/2	28-3/4	45	19-7/8	11-15/16	164.29
3975-792C	18X12	6	24	25-1/8	15	33	31-3/8	48	19-7/8	14-1/8	188.79
3975-794C	18X14	7	25	26-3/8	16	34	33-3/8	50	19-7/8	15-1/2	211.64

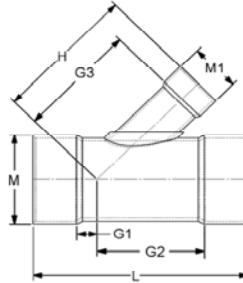
Fabricated Fittings Technical
CPVC Schedule 80 DWV Fabricated Fittings



Wye SCH 80- Reducer

Socket X Socket X Socket

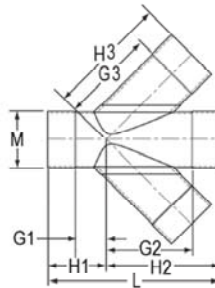
(Continued)



Part Number	Size	G1	G2	G3	H1	H2	H3	L	M	M1	Approx. Wt. (Lbs.)
3975-796C	18X16	8-1/2	26-1/2	27-3/8	17-1/2	35-1/2	35-3/8	53	19-7/8	17-11/16	243.00
3975-814C	20X4	1	19	19-3/16	9	29	21-7/16	38	22-1/16	5-3/16	163.15
3975-816C	20X6	1/8	19-7/8	21-1/4	9-7/8	29-7/8	24-1/2	39-3/4	22-1/16	7-1/2	153.83
3975-818C	20X8	2-5/8	22-5/8	23-3/16	12-5/8	32-5/8	27-7/16	45-1/4	22-1/16	9-5/8	199.39
3975-820C	20X10	4-1/8	24-1/8	24-13/16	14-1/8	34-1/8	30-1/16	48-1/4	22-1/16	11-15/16	192.38
3975-822C	20X12	5-5/8	25-5/8	26-7/16	15-5/8	35-5/8	32-11/16	51-1/4	22-1/16	14-1/8	243.92
3975-824C	20X14	7-1/8	27-1/8	27-11/16	17-1/8	37-1/8	34-11/16	54-1/4	22-1/16	15-1/2	266.32
3975-826C	20X16	8-1/2	28-1/2	28-11/16	18-1/2	38-1/2	36-11/16	57	22-1/16	17-11/16	321.08
3975-828C	20X18	10-1/8	30-1/8	30-11/16	20-1/8	40-1/8	39-11/16	60-1/4	22-1/16	19-7/8	255.61
3975-904C	24X4	3	21	21-3/4	9	33	24	42	26-7/16	5-3/16	251.85
3975-906C	24X6	7/8	23-1/8	23-13/16	11-1/8	35-1/8	27-1/16	46-1/4	26-7/16	7-1/2	277.07
3975-908C	24X8	1-3/4	25-3/4	25-3/4	13-3/4	37-3/4	30	51-1/2	26-7/16	9-5/8	315.20
3975-910C	24X10	3-1/4	27-1/4	27-3/8	15-1/4	39-1/4	32-5/8	54-1/2	26-7/16	11-15/16	340.64
3975-912C	24X12	4-3/4	28-3/4	29	16-3/4	40-3/4	35-1/4	57-1/2	26-7/16	14-1/8	369.25
3975-914C	24X14	6-1/4	30-1/4	30-1/4	18-1/4	42-1/4	37-1/4	60-1/2	26-7/16	15-1/2	398.37
3975-916C	24X16	7-3/4	31-3/4	31-1/4	19-3/4	43-3/4	39-1/4	63-1/2	26-7/16	17-11/16	432.85
3975-918C	24X18	9-1/4	33-1/4	33-1/4	21-1/4	45-1/4	42-1/4	66-1/2	26-7/16	19-7/8	255.61
3975-920C	24X20	9-5/8	33-5/8	34-3/16	21-5/8	45-5/8	44-3/16	67-1/4	26-7/16	22-1/16	372.55

Double Wye SCH 80

Socket X Socket X Socket X Socket



Part Number	Size	G1	G2	G3	H1	H2	H3	L	M	Approx. Wt. (Lbs.)
3976-020C	2	3-15/16	6-5/16	5-5/8	5-7/16	7-13/16	7-3/16	13-1/4	2-7/8	2.86
3976-030C	3	4-3/4	8-1/4	8-1/4	6-5/8	10-3/16	10-3/16	16-13/16	4-3/16	7.87
3976-040C	4	4-11/16	9-3/16	9-3/16	6-15/16	11-7/16	11-7/16	18-3/8	5-3/16	9.25
3976-060C	6	4-15/16	11-9/16	12-5/8	8-3/16	14-13/16	15-7/8	23	7-1/2	23.68
3976-080C	8	5-1/16	13-11/16	15-7/8	9-5/16	17-15/16	20-1/8	27-1/4	9-5/8	43.61
3976-100C	10	6-1/2	17-1/4	18-7/8	11-3/4	22-1/2	24-1/8	34-1/4	11-15/16	80.27
3976-120C	12	7-1/8	19-7/8	21-13/16	13-3/8	26-1/8	28-1/16	39-1/2	14-1/8	149.18
3976-140C	14	9-13/16	23-13/16	23-13/16	16-13/16	30-13/16	30-13/16	47-5/8	15-1/2	160.04
3976-160C	16	10-1/8	26-1/8	26-1/8	18-1/8	34-1/8	34-1/8	52-1/4	17-11/16	212.20

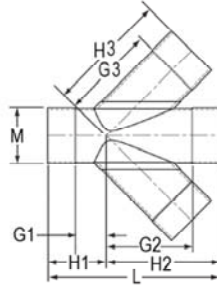


Fabricated Fittings Technical
CPVC Schedule 80 DWV Fabricated Fittings

Double Wye SCH 80

(Continued)

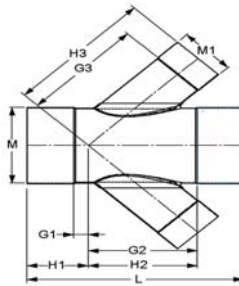
Socket X Socket X Socket X Socket



Part Number	Size	G1	G2	G3	H1	H2	H3	L	M	Approx. Wt. (Lbs.)
3976-180C	18	10	28	29-3/8	19	37	38-3/8	56	19-7/8	231.41
3976-200C	20	11-5/8	31-5/8	31-5/8	21-5/8	41-5/8	41-5/8	63-1/4	21-1/16	399.59
3976-240C	24	14-1/4	38-1/4	38-1/4	26-1/4	50-1/4	50-1/4	76-1/2	26-7/16	617.50

Double Wye SCH 80- Reducer

Socket X Socket X Socket X Socket



Part Number	Size	G1	G2	G3	H1	H2	H3	L	M	M1	Approx. Wt. (Lbs.)
3976-420C	4X2	2-1/4	6-3/4	7-13/16	4-1/2	9	9-9/16	13-1/2	5-3/16	2-13/16	5.51
3976-422C	4X3	4-13/16	9-5/16	9	7-1/16	11-9/16	10-15/16	18-5/8	5-1/4	4-3/16	9.47
3976-530C	6X3	2-15/16	9-9/16	10-5/16	6-3/16	12-13/16	12-9/16	19	7-1/2	4-1/8	12.55
3976-532C	6X4	3-15/16	10-9/16	10-9/16	7-3/16	13-13/16	12-13/16	21	7-1/2	5-3/16	16.77
3976-578C	8X2	7/8	9-1/4	10-1/2	5-1/8	13-3/4	12-1/4	18-7/8	9-5/8	2-13/16	17.30
3976-580C	8X3	1-15/16	10-9/16	11-5/8	6-3/16	14-13/16	13-7/8	21	9-5/8	4-1/8	20.70
3976-582C	8X4	2-15/16	11-9/16	11-7/8	7-3/16	15-13/16	14-1/8	23	9-5/8	5-3/16	20.59
3976-585C	8X6	4-15/16	13-9/16	13-15/16	9-3/16	17-13/16	17-3/16	27	9-5/8	7-1/2	34.22
3976-621C	10X2	1/4	10-1/2	11-7/8	5	15-3/4	13-5/8	20-3/4	11-15/16	2-13/16	27.20
3976-623C	10X3	3/4	11-1/2	13	6	16-3/4	15-1/4	22-3/4	11-15/16	4-1/8	31.16
3976-624C	10X4	1-3/4	12-1/2	13-1/4	7	17-3/4	15-1/2	24-3/4	11-15/16	5-3/16	33.45
3976-626C	10X6	3-3/4	14-1/2	15-5/16	9	19-3/4	18-9/16	28-3/4	11-15/16	7-1/2	46.46
3976-628C	10X8	5-1/4	16	17-1/4	10-1/2	21-3/4	21-1/2	31-3/4	11-15/16	9-5/8	62.18
3976-661C	12X2	1-5/16	11-7/16	13-3/16	4-15/16	17-11/16	14-15/16	22-5/8	14-1/8	2-13/16	39.69
3976-663C	12X3	1/8	12-7/8	14-5/16	6-3/8	19-1/8	16-9/16	25-1/2	14-1/8	4-1/8	46.17
3976-664C	12X4	5/8	13-3/8	14-9/16	6-7/8	19-5/8	16-13/16	26-1/2	14-1/8	5-3/16	49.78
3976-666C	12X6	2-5/8	15-3/8	16-5/8	8-7/8	21-5/8	19-7/8	30-1/2	14-1/8	7-1/2	62.61
3976-668C	12X8	4-1/4	17	18-9/16	10-1/2	23-1/4	22-13/16	33-3/4	14-1/8	9-5/8	79.18
3976-670C	12X10	5-3/4	18-1/2	20-3/16	12	24-3/4	25-7/8	36-3/4	14-1/8	11-15/16	102.16
3976-691C	14X2	1/4	13-3/4	13-15/16	6-3/4	20-3/4	15-11/16	27-1/2	15-1/2	2-13/16	49.16
3976-693C	14X3	1/2	14-1/2	15-1/16	7-1/2	21-1/2	17-5/16	29	15-1/2	4-1/8	54.08
3976-694C	14X4	1-5/16	15-3/16	15-5/16	8-5/16	22-3/16	17-9/16	30-1/2	15-1/2	5-3/16	57.53
3976-696C	14X6	2	16	17-3/8	9	23	20-5/8	32	15-1/2	7-1/2	67.78
3976-698C	14X8	4-1/4	18-1/4	19-5/16	11-1/4	25-1/4	23-9/16	36-1/2	15-1/2	9-5/8	99.70

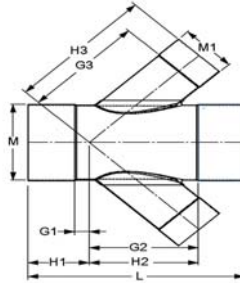
Fabricated Fittings Technical
CPVC Schedule 80 DWV Fabricated Fittings



Double Wye SCH 80- Reducer

(Continued)

Socket X Socket X Socket X Socket



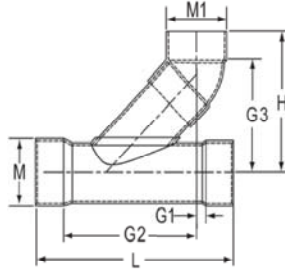
Part Number	Size	G1	G2	G3	H1	H2	H3	L	M	M1	Approx. Wt. (Lbs.)
3976-700C	14X10	5-3/4	19-3/4	20-15/16	12-3/4	26-3/4	26-3/16	39-1/2	15-1/2	11-15/16	101.51
3976-702C	14X12	7-1/4	21-1/4	22-9/16	14-1/4	28-1/4	28-13/16	42-1/2	15-1/2	14-1/8	133.44
3976-751C	16X2	7/8	15-1/8	15-1/4	7-1/8	23-1/8	17	30-1/4	17-11/16	2-13/16	72.73
3976-753C	16X3	1/8	15-7/8	16-3/8	7-7/8	23-7/8	18-5/8	31-3/4	17-11/16	4-1/8	78.97
3976-754C	16X4	1-1/8	17-1/8	16-5/8	9-1/8	25-1/8	18-7/8	34-1/4	17-11/16	5-3/16	85.06
3976-756C	16X6	1-5/8	17-5/8	18-11/16	9-5/8	25-5/8	21-15/16	35-1/4	17-11/16	7-1/2	107.48
3976-758C	16X8	3-5/8	19-5/8	20-5/8	11-5/8	27-5/8	24-7/8	39-1/4	17-11/16	9-5/8	128.73
3976-760C	16X10	5-1/8	21-1/8	22-1/4	13-1/8	29-1/8	27-1/2	42-1/4	17-11/16	11-15/16	135.16
3976-762C	16X12	6-1/2	22-1/2	23-7/8	14-1/2	30-1/2	30-1/8	45	17-11/16	14-1/8	185.32
3976-764C	16X14	7-7/8	23-7/8	25-1/8	15-7/8	31-7/8	32-1/8	47-3/4	17-11/16	15-1/2	183.14
3976-784C	18X4	0	18	17-7/8	18	27	20-1/8	36	19-7/8	5-3/16	126.70
3976-786C	18X6	3/8	18-9/16	20-1/8	9-3/8	27-9/16	23-3/8	36-15/16	19-7/8	7-1/2	120.08
3976-788C	18X8	3	21	21-7/8	12	30	26-1/8	42	19-7/8	9-5/8	138.64
3976-790C	18X10	4-1/2	22-1/2	23-1/2	13-1/2	31-1/2	28-3/4	45	19-7/8	11-15/16	168.24
3976-792C	18X12	6	24	25-1/8	15	33	31-3/8	48	19-7/8	14-1/8	198.41
3976-794C	18X14	7	25	26-3/8	16	34	33-3/8	50	19-7/8	15-1/2	221.25
3976-796C	18X16	8-1/2	26-1/2	27-3/8	17-1/2	35-1/2	35-3/8	53	19-7/8	17-11/16	225.00
3976-814C	20X4	1	19	19-3/16	9	29	21-7/16	38	22-1/16	5-3/16	144.64
3976-818C	20X8	2-5/8	22-5/8	23-3/16	12-5/8	22-5/8	27-7/16	45-1/4	22-1/16	9-5/8	179.83
3976-820C	20X10	4-1/8	24-1/8	24-13/16	14-1/8	34-1/8	30-1/16	48-1/4	22-1/16	11-15/16	211.31
3976-822C	20X12	5-5/8	25-5/8	26-7/16	15-5/8	35-5/8	32-11/16	51-1/4	22-1/16	14-1/8	243.36
3976-824C	20X14	7-1/8	27-1/8	27-11/16	17-1/8	37-1/8	34-11/16	54-1/4	22-1/16	15-1/2	270.86
3976-826C	20X16	8-1/2	28-1/2	28-11/16	18-1/2	38-1/2	36-11/16	57	22-1/16	17-11/16	250.00
3976-828C	20X18	10-1/8	30-1/8	30-11/16	20-1/8	40-1/8	39-11/16	60-1/4	22-1/16	19-7/8	255.61
3976-904C	24X4	3	21	21-3/4	9	33	24	42	26-7/16	5-3/16	206.27
3976-906C	24X6	7/8	23-1/8	23-13/16	11-1/8	35-1/8	27-1/16	46-1/4	26-7/16	7-1/2	253.70
3976-908C	24X8	1-3/4	25-3/4	25-3/4	13-3/4	37-3/4	30	51-1/2	26-7/16	9-5/8	282.55
3976-910C	24X10	3-1/4	27-1/4	27-3/8	15-1/4	39-1/4	32-5/8	54-1/2	26-7/16	11-15/16	318.32
3976-912C	24X12	4-3/4	28-3/4	29	16-3/4	40-3/4	35-1/4	57-1/2	26-7/16	14-1/8	354.67
3976-914C	24X14	6-1/4	30-1/4	30-1/4	18-1/4	42-1/4	37-1/4	60-1/2	26-7/16	15-1/2	381.62
3976-918C	24X18	9-1/4	33-1/4	33-1/4	21-1/4	45-1/4	42-1/4	66-1/2	26-7/16	19-7/8	255.61
3976-920C	24X20	9-5/8	33-5/8	34-3/16	21-5/8	45-5/8	44-3/16	67-1/4	26-7/16	22-1/16	372.55



Fabricated Fittings Technical
CPVC Schedule 80 DWV Fabricated Fittings

Combo Wye SCH 80

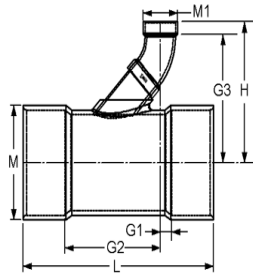
Socket X Socket X Socket



Part Number	Size	G1	G2	G3	H	L	M	M1	Approx. Wt. (Lbs.)
3977-020C	2	13/16	3-7/8	4-5/8	6-1/8	6-7/8	2-7/8	2-7/8	1.74
3977-030C	3	7/8	5-3/4	6-1/2	8-3/8	9-9/16	4-3/16	4-3/16	4.38
3977-040C	4	7/8	13	9-3/8	11-5/8	18-3/8	5-3/16	5-1/4	8.63
3977-060C	6	11/16	15-13/16	12-5/8	15-11/16	23	7-1/2	7-5/8	22.57
3977-080C	8	7/16	19-3/16	16-1/8	20-1/8	27-1/4	9-5/8	9-3/4	40.52
3977-100C	10	1/4	23-1/2	19-9/16	24-11/16	34-1/4	11-15/16	12-1/16	70.74
3977-120C	12	5/16	27-5/16	23-1/4	29-3/8	39-1/2	14-1/8	14-1/4	117.74
3977-140C	14	2-1/2	31-1/8	28-9/16	35-9/16	47-5/8	15-1/2	15-1/2	151.32
3977-160C	16	1-11/16	34-9/16	32-3/16	40-3/16	52-1/4	17-11/16	17-11/16	215.96
3977-180C	18	1/2	37-1/2	35-7/8	44-7/8	56	19-7/8	19-7/8	312.88
3977-200C	20	1	42-1/4	39-9/16	49-9/16	63-1/4	22-1/16	22-1/16	404.32
3977-240C	24	1-7/16	52-1/16	47-3/8	59-3/8	76-1/2	26-7/16	26-7/16	876.93

Combo Wye SCH 80- Reducer

Socket X Socket X Socket



Part Number	Size	G1	G2	G3	H	L	M	M1	Approx. Wt. (Lbs.)
3977-420C	4X2	3/4	8-1/4	6-5/8	8-3/16	13-1/2	5-3/16	2-7/8	5.28
3977-422C	4X3	2-7/16	11-11/16	7-3/4	9-11/16	18-5/8	5-1/4	4-1/8	8.37
3977-528C	6X2	1-9/16	8-15/16	7-5/8	9-1/8	17	7-1/2	2-7/8	9.58
3977-530C	6X3	1-5/16	11-3/16	9-3/16	11-1/16	19	7-1/2	4-3/16	11.82
3977-532C	6X4	1-1/4	13-1/4	10-3/8	12-5/8	21	7-1/2	5-1/4	14.95
3977-578C	8X2	1-9/16	8-13/16	8-9/16	10-1/16	18-7/8	9-5/8	2-7/8	14.98
3977-580C	8X3	1-5/16	11-3/16	10-1/8	12	21	9-5/8	4-3/16	18.83
3977-582C	8X4	1-5/16	13-3/16	11-1/4	13-9/16	23	9-5/8	5-1/4	22.78
3977-585C	8X6	1-3/4	16-3/4	13-9/16	16-9/16	27	9-5/8	7-5/8	30.17
3977-621C	10X2	1-5/8	8-5/8	9-1/2	11-1/16	20-3/4	11-15/16	2-7/8	23.76
3977-623C	10X3	1-5/16	10-15/16	11-1/16	13	22-3/4	11-15/16	4-3/16	28.30
3977-624C	10X4	1-5/16	12-15/16	12-1/4	14-1/2	24-3/4	11-15/16	5-1/4	31.93
3977-626C	10X6	1-3/4	16-1/2	14-1/2	17-9/16	28-3/4	11-15/16	7-5/8	44.14
3977-628C	10X8	15/16	20-5/16	17-1/16	21-1/8	31-3/4	11-15/16	9-3/4	56.16
3977-661C	12X2	1-5/8	8-1/2	10-7/16	11-15/16	22-5/8	14-1/8	2-7/8	35.55

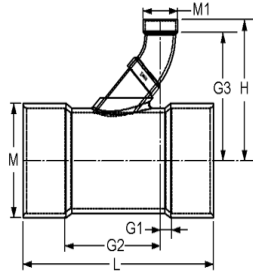
Fabricated Fittings Technical
CPVC Schedule 80 DWV Fabricated Fittings



Combo Wye SCH 80- Reducer

Socket X Socket X Socket

(Continued)



Part Number	Size	G1	G2	G3	H	L	M	M1	Approx. Wt. (Lbs.)
3977-663C	12X3	1-3/4	11-1/4	12	13-7/8	25-1/2	14-1/8	4-3/16	43.72
3977-664C	12X4	1-1/4	12-3/4	13-1/8	15-7/16	26-1/2	14-1/8	5-1/4	48.55
3977-666C	12X6	1-11/16	16-5/16	15-7/16	18-7/16	30-1/2	14-1/8	7-5/8	57.66
3977-668C	12X8	1	20-1/4	18	22	33-3/4	14-1/8	9-3/4	73.78
3977-670C	12X10	5/8	23-5/8	20-1/2	25-9/16	36-3/4	14-1/8	12-1/16	88.52
3977-691C	14X2	3-3/8	10-1/8	11	12-1/2	27-1/2	15-1/2	2-7/8	48.63
3977-693C	14X3	2-13/16	12-3/16	12-9/16	14-7/16	29	15-1/2	4-3/16	53.07
3977-694C	14X4	2-9/16	13-15/16	13-11/16	16	30-1/2	15-1/2	5-1/4	60.90
3977-696C	14X6	1-3/4	16-1/4	16	19	32	15-1/2	7-5/8	69.82
3977-698C	14X8	1-11/16	20-13/16	18-9/16	22-9/16	36-1/2	15-1/2	9-3/4	87.13
3977-700C	14X10	1-5/16	24-3/16	21-1/16	26-1/8	39-1/2	15-1/2	12-1/16	117.76
3977-702C	14X12	1/2	28	23-13/16	29-15/16	42-1/2	15-1/2	14-1/4	137.16
3977-751C	16X2	3-7/8	10-3/8	11-7/8	13-7/16	30-1/4	17-11/16	2-7/8	72.27
3977-753C	16X3	3-5/16	12-7/16	13-7/16	15-3/8	31-3/4	17-11/16	4-3/16	77.89
3977-754C	16X4	3-9/16	14-11/16	14-5/8	16-7/8	34-1/4	17-11/16	5-1/4	96.11
3977-756C	16X6	2-1/2	16-3/4	16-7/8	19-15/16	35-1/4	17-11/16	7-5/8	105.17
3977-758C	16X8	2-3/16	21-1/16	19-7/16	23-1/2	39-1/4	17-11/16	9-3/4	127.54
3977-760C	16X10	1-3/4	24-1/2	21-15/16	27-1/16	42-1/4	17-11/16	12-1/16	127.20
3977-762C	16X12	7/8	28-1/8	24-3/4	30-13/16	45	17-11/16	14-1/4	146.43
3977-764C	16X14	1-5/8	30-1/8	29-7/16	36-7/16	47-3/4	17-11/16	15-1/2	189.20
3977-784C	18X4	3-1/2	14-1/2	15-1/2	17-13/16	36	19-7/8	5-1/4	116.37
3977-786C	18X6	2-3/8	16-1/2	17-7/8	20-15/16	36-15/16	19-7/8	7-5/8	128.59
3977-788C	18X8	2-5/8	21-3/8	20-3/8	24-3/8	42	19-7/8	9-3/4	153.26
3977-790C	18X10	2-1/4	24-3/4	22-7/8	27-15/16	45	19-7/8	12-1/16	178.03
3977-792C	18X12	1-7/16	28-9/16	25-5/8	31-3/4	48	19-7/8	14-1/4	209.91
3977-794C	18X14	1-7/8	30-1/8	30-3/8	37-3/8	50	19-7/8	15-1/2	206.40
3977-796C	18X16	1-3/16	33-13/16	33-1/8	41-1/8	53	19-7/8	17-11/16	366.77
3977-814C	20X4	3-5/8	14-3/8	16-7/16	18-11/16	38	22-1/16	5-1/4	143.89
3977-816C	20X6	2-15/16	16-7/8	18-11/16	21-3/4	39-3/4	22-1/16	7-5/8	153.33
3977-818C	20X8	3-3/8	21-7/8	21-1/4	25-5/16	45-1/4	22-1/16	9-3/4	182.16
3977-820C	20X10	2-15/16	25-5/16	23-3/4	28-7/8	48-1/4	22-1/8	12-1/16	203.34
3977-822C	20X12	2-3/16	29-1/16	26-9/16	32-5/8	51-1/4	22-1/16	14-1/4	232.18
3977-824C	20X14	3-1/16	31-3/16	31-1/4	38-1/4	54-1/4	22-1/16	15-1/2	256.01
3977-826C	20X16	2-1/4	34-3/4	34	42	57	22-1/16	17-11/16	250.00
3977-828C	20X18	1-11/16	38-9/16	36-13/16	45-13/16	60-1/4	22-1/16	19-7/8	255.61
3977-904C	24X4	3-3/16	14-3/16	18-1/4	20-1/2	42	26-7/16	5-1/4	253.21
3977-906C	24X6	4-5/16	17-7/8	20-1/2	23-9/16	46-1/4	26-7/16	7-5/8	252.31
3977-908C	24X8	4-11/16	22-13/16	23-1/16	27-1/8	51-1/2	26-7/16	9-3/4	284.88
3977-910C	24X10	4-1/4	26-1/4	25-9/16	30-11/16	54-1/2	26-7/16	12-1/16	310.35

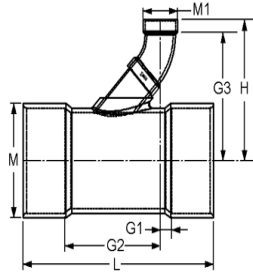


Fabricated Fittings Technical
CPVC Schedule 80 DWV Fabricated Fittings

Combo Wye SCH 80- Reducer

(Continued)

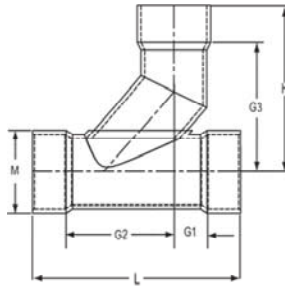
Socket X Socket X Socket



Part Number	Size	G1	G2	G3	H	L	M	M1	Approx. Wt. (Lbs.)
3977-912C	24X12	3-1/2	30	28-3/8	34-7/16	57-1/2	26-7/16	14-1/4	392.94
3977-914C	24X14	4-3/8	32-1/8	33-1/16	40-1/16	60-1/2	26-7/16	15-1/2	366.77
3977-916C	24X16	3-11/16	35-13/16	35-13/16	43-13/16	63-1/2	26-7/16	17-11/16	310.59
3977-918C	24X18	3	39-1/2	38-5/8	47-5/8	66-1/2	26-7/16	19-7/8	526.01
3977-920C	24X20	1-3/16	42-1/16	41-3/8	51-3/8	67-1/4	26-7/16	22-1/16	372.55

Sanitary Tee SCH 80

Socket X Socket X Socket



Part Number	Size	G1	G2	G3	H	L	M	Approx. Wt. (Lbs.)
3990-020C	2	3-15/16	6-1/4	5-3/4	7-1/4	13-1/4	2-7/8	2.44
3990-030C	3	4-7/8	8-3/8	8-5/16	10-3/16	17	4-3/16	5.94
3990-040C	4	4-9/16	9-5/16	10-1/16	12-5/16	18-3/8	5-3/16	7.81
3990-060C	6	4-5/8	11-7/8	12-1/16	15-5/16	23	7-1/2	18.39
3990-080C	8	4-1/2	14-1/4	14-7/8	19-1/8	27-1/4	9-5/8	34.64
3990-100C	10	5-11/16	18-1/16	17-13/16	23-1/16	34-1/4	11-15/16	58.78
3990-120C	12	6-1/8	20-7/8	20-9/16	26-13/16	39-1/2	14-1/8	102.42
3990-140C	14	8-3/4	24-7/8	22-5/16	29-5/16	47-5/8	15-1/2	127.04
3990-160C	16	8-13/16	27-3/8	25-1/16	33-1/16	52-1/4	17-11/16	204.59
3990-180C	18	8-9/16	29-1/16	27-13/16	36-13/16	56	19-7/8	313.87
3990-200C	20	10	33-1/4	30-9/16	40-9/16	63-1/4	22-1/6	399.59
3990-240C	24	12-1/4	40-1/4	36-9/16	48-9/16	76-1/2	26-7/16	617.50