

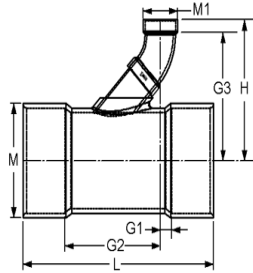


Fabricated Fittings Technical
CPVC Schedule 80 DWV Fabricated Fittings

Combo Wye SCH 80- Reducer

(Continued)

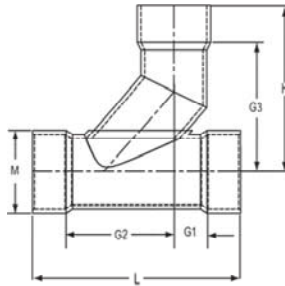
Socket X Socket X Socket



Part Number	Size	G1	G2	G3	H	L	M	M1	Approx. Wt. (Lbs.)
3977-912C	24X12	3-1/2	30	28-3/8	34-7/16	57-1/2	26-7/16	14-1/4	392.94
3977-914C	24X14	4-3/8	32-1/8	33-1/16	40-1/16	60-1/2	26-7/16	15-1/2	366.77
3977-916C	24X16	3-11/16	35-13/16	35-13/16	43-13/16	63-1/2	26-7/16	17-11/16	310.59
3977-918C	24X18	3	39-1/2	38-5/8	47-5/8	66-1/2	26-7/16	19-7/8	526.01
3977-920C	24X20	1-3/16	42-1/16	41-3/8	51-3/8	67-1/4	26-7/16	22-1/16	372.55

Sanitary Tee SCH 80

Socket X Socket X Socket



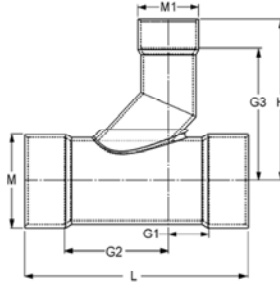
Part Number	Size	G1	G2	G3	H	L	M	Approx. Wt. (Lbs.)
3990-020C	2	3-15/16	6-1/4	5-3/4	7-1/4	13-1/4	2-7/8	2.44
3990-030C	3	4-7/8	8-3/8	8-5/16	10-3/16	17	4-3/16	5.94
3990-040C	4	4-9/16	9-5/16	10-1/16	12-5/16	18-3/8	5-3/16	7.81
3990-060C	6	4-5/8	11-7/8	12-1/16	15-5/16	23	7-1/2	18.39
3990-080C	8	4-1/2	14-1/4	14-7/8	19-1/8	27-1/4	9-5/8	34.64
3990-100C	10	5-11/16	18-1/16	17-13/16	23-1/16	34-1/4	11-15/16	58.78
3990-120C	12	6-1/8	20-7/8	20-9/16	26-13/16	39-1/2	14-1/8	102.42
3990-140C	14	8-3/4	24-7/8	22-5/16	29-5/16	47-5/8	15-1/2	127.04
3990-160C	16	8-13/16	27-3/8	25-1/16	33-1/16	52-1/4	17-11/16	204.59
3990-180C	18	8-9/16	29-1/16	27-13/16	36-13/16	56	19-7/8	313.87
3990-200C	20	10	33-1/4	30-9/16	40-9/16	63-1/4	22-1/6	399.59
3990-240C	24	12-1/4	40-1/4	36-9/16	48-9/16	76-1/2	26-7/16	617.50

Fabricated Fittings Technical
CPVC Schedule 80 DWV Fabricated Fittings



Sanitary Tee SCH 80- Reducer

Socket X Socket X Socket



Part Number	Size	G1	G2	G3	H	L	M	M1	Approx. Wt. (Lbs.)
3990-337C	3X1-1/2	4-11/16	6-3/16	5	6-3/8	14-11/16	4-3/16	2-3/8	3.81
3990-338C	3X2	4-11/16	6-13/16	5-15/16	7-7/16	15-5/16	4-3/16	2-7/8	4.51
3990-420C	4X2	4-9/16	7-7/16	6-11/16	8-1/4	16-1/2	5-3/16	2-7/8	5.28
3990-422C	4X3	5-5/16	8-3/4	7-7/8	9-3/4	18-9/16	5-5/16	4-3/16	8.59
3990-530C	6X3	4-3/16	8-5/16	9	11-1/4	19	7-1/2	4-1/8	11.49
3990-532C	6X4	5	9-1/2	11	13-1/4	21	7-1/2	5-3/16	14.70
3990-580C	8X3	4-1/4	8-1/4	9-15/16	12-3/16	21	9-5/8	4-1/8	15.41
3990-582C	8X4	5-1/16	9-7/16	11-15/16	14-3/16	23	9-5/8	5-3/16	21.14
3990-585C	8X6	5-11/16	12-13/16	13	16-1/4	27	9-5/8	7-1/2	30.50
3990-621C	10X2	4	6-1/4	9-9/16	11-1/8	20-3/4	11-15/16	2-7/8	22.69
3990-623C	10X3	4-1/4	8	10-7/8	13-1/8	22-3/4	11-15/16	4-1/8	17.29
3990-624C	10X4	5	9-1/4	12-15/16	15-3/16	24-3/4	11-15/16	5-3/16	32.64
3990-626C	10X6	5-5/8	12-5/8	14	17-1/4	28-3/4	11-15/16	7-1/2	41.40
3990-628C	10X8	5-13/16	15-7/16	15-13/16	20-1/16	31-3/4	11-15/16	9-5/8	42.46
3990-661C	12X2	4	6-1/8	10-1/2	12	22-5/8	14-1/8	2-7/8	22.69
3990-663C	12X3	4-11/16	8-5/16	11-13/16	14-1/16	25-1/2	14-1/8	4-1/8	39.54
3990-664C	12X4	5	9	13-13/16	16-1/16	26-1/2	14-1/8	5-3/16	47.70
3990-666C	12X6	5-5/8	12-3/8	14-7/8	18-1/8	30-1/2	14-1/8	7-1/4	49.42
3990-668C	12X8	5-15/16	15-5/16	16-3/4	21	33-3/4	14-7/8	9-5/8	58.46
3990-670C	12X10	6-1/16	18-3/16	18-11/16	23-15/16	36-3/4	14-1/8	11-15/16	75.98
3990-691C	14X2	5-3/4	7-3/4	11-1/16	12-9/16	27-1/2	15-1/2	2-7/8	48.65
3990-693C	14X3	5-3/4	9-1/4	12-3/8	14-5/8	29	15-1/2	4-1/8	52.94
3990-694C	14X4	6-5/16	10-3/16	14-3/8	16-5/8	30-1/2	15-1/2	5-3/16	57.29
3990-696C	14X6	5-11/16	12-5/16	7-1/2	18-11/16	32	15-1/2	7-1/2	63.57
3990-698C	14X8	6-5/8	15-7/8	17-5/16	21-9/16	36-1/2	15-1/2	9-5/8	76.19
3990-700C	14X10	6-3/4	18-3/4	19-1/4	24-1/2	39-1/2	15-1/2	11-15/16	91.31
3990-702C	14X12	6-7/8	21-5/8	21-3/16	27-7/16	42-1/2	15-1/2	14-1/8	121.85
3990-751C	16X2	6-1/4	8	11-15/16	13-1/2	30-1/4	17-11/16	2-7/8	72.27
3990-753C	16X3	6-1/4	9-1/2	13-1/4	15-1/2	31-3/4	17-11/16	4-1/8	77.80
3990-754C	16X4	7-1/4	11	15-5/16	17-9/16	34-1/4	17-11/16	5-3/16	83.21
3990-756C	16X6	6-3/8	12-7/8	16-3/8	19-5/8	35-1/4	17-11/16	7-1/4	89.74
3990-796C	18X16	8-5/16	26-11/16	25-15/16	33-15/16	53	19-7/8	17-11/16	366.77
3990-758C	16X8	7-1/16	16-3/16	18-3/16	22-7/16	39-1/4	17-11/16	9-5/8	103.42
3990-760C	16X10	7-3/16	19-1/16	20-3/16	25-7/16	42-1/4	17-11/16	11-15/16	121.22
3990-762C	16X12	7-5/16	21-11/16	22-1/16	28-5/16	45	17-11/16	14-1/8	138.52
3990-764C	16X14	7-7/8	23-7/8	23-3/16	30-3/16	47-3/4	17-11/16	15-1/2	155.67
3990-784C	18X4	7-1/4	10-3/4	16-3/16	18-7/16	36	19-7/8	5-3/16	108.77
3990-786C	18X6	6-5/16	21-5/8	17-3/8	20-5/8	36-15/16	19-7/8	7-1/4	116.10
3990-788C	18X8	7-9/16	25-7/16	19-1/8	23-3/8	42	19-7/8	9-5/8	147.14

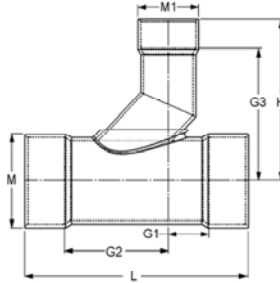


Fabricated Fittings Technical
CPVC Schedule 80 DWV Fabricated Fittings

Sanitary Tee SCH 80- Reducer

(Continued)

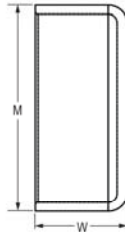
Socket X Socket X Socket



Part Number	Size	G1	G2	G3	H	L	M	M1	Approx. Wt. (Lbs.)
3990-790C	18X10	7-11/16	19-5/16	21-1/16	26-5/16	45	19-7/8	11-15/16	154.29
3990-792C	18X12	7-7/8	22-1/8	22-15/16	29-3/16	48	19-7/8	14-1/8	176.07
3990-794C	18X14	8-1/8	23-7/8	24-1/8	31-1/8	50	19-7/8	15-1/2	191.55
3990-814C	20X4	7-5/16	10-11/16	17-1/8	19-3/8	38	22-1/16	5-3/16	143.02
3990-816C	20X6	6-13/16	12-15/16	18-3/16	21-7/16	39-3/4	22-1/16	7-1/2	150.74
3990-818C	20X8	8-1/4	17	20	24-1/4	45-1/4	22-1/16	9-5/8	173.77
3990-820C	20X10	8-3/8	19-7/8	22	27-1/4	48-1/4	22-1/16	11-15/16	197.36
3990-822C	20X12	8-5/8	22-5/8	23-13/16	30-1/16	51-1/4	22-1/16	14-1/8	221.01
3990-824C	20X14	9-5/16	24-15/16	25	32	54-1/4	22-1/16	15-1/2	241.16
3990-826C	20X16	9-7/16	27-9/16	26-7/8	34-7/8	57	22-1/16	17-11/16	250.00
3990-828C	20X18	9-3/4	30-1/2	28-3/4	37-3/4	60-1/4	22-1/16	18-3/4	255.61
3990-904C	24X4	7-1/2	10-1/2	18-15/16	21-3/16	42	26-7/16	5-3/16	221.15
3990-906C	24X6	8-1/4	13-15/16	20	23-1/4	46-1/4	26-7/16	7-1/2	249.72
3990-908C	24X8	9-9/16	17-15/16	21-13/16	26-1/16	51-1/2	26-7/16	9-5/8	276.49
3990-910C	24X10	9-11/16	20-13/16	23-13/16	29-1/16	54-1/2	26-7/16	11-15/16	304.37
3990-912C	24X12	9-15/16	23-9/16	25-11/16	31-15/16	57-1/2	26-7/16	14-1/8	332.32
3990-914C	24X14	10-5/8	25-7/8	26-13/16	33-13/16	60-1/2	26-7/16	15-1/2	351.92
3990-916C	24X16	10-7/8	28-5/8	28-11/16	36-11/16	63-1/2	26-7/16	17-11/16	310.59
3990-918C	24X18	11-1/16	31-7/16	30-9/16	39-9/16	66-1/2	26-7/16	19-7/8	255.61
3990-920C	24X20	10-3/16	33-1/16	32-3/8	42-3/8	67-1/4	26-7/16	22-1/16	372.55

Cap SCH 80

Socket



Part Number	Size	M	W	Approx. Wt. (Lbs.)
3947-040C	4	4-7/8	2-1/4	.33
3947-060C	6	7-1/4	3-1/4	1.45
3947-080C	8	9-11/16	3-3/4	3.59
3947-100C	10	11-9/16	3-3/4	3.85
3947-120C	12	13-9/16	4-1/8	5.83
3947-140C	14	14-13/16	5-3/4	8.14
3947-160C	16	17-1/8	5-1/2	10.57