

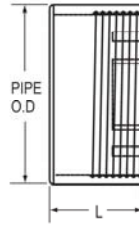


**Fabricated Fittings Technical**  
**CPVC Schedule 80 DWV Fabricated Fittings**

**Cleanout Adapter w/Plug SCH 80**

(Continued)

Spigot X Clean-out  
**SOLD AS SET ONLY (Non-Pressure Rated)**

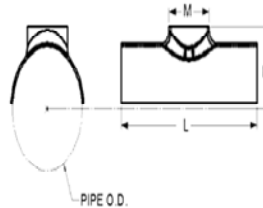


Part Number	Size	L	Approx. Wt. (Lbs.)
3978-140C	14	7-1/2	21.03
3978-160C	16	8-1/2	38.44
3978-180C	18	9	31.93
3978-200C	20	10	415.72
3978-240C	24	12	66.36

Fabricated CPVC Gray With Custom Taper Thread and CPVC Plug

**Saddle SCH 80**

IPS O.D. X Socket Schedule 80  
 (Non Pressure Rated)



Part Number	Size	H	L	M	Approx. Wt. (Lbs.)
3963-528C	6X2	4-3/16	8-3/4	3	1.38
3963-530C	6X3	4-1/2	9	4-5/16	1.92
3963-532C	6X4	4-3/4	10	5-1/4	2.20
3963-621C	10X2	6-9/16	8-3/4	3-3/16	2.13
3963-623C	10X3	6-7/8	9	4-5/16	2.09
3963-624C	10X4	6-3/4	10	5-5/16	3.08
3963-626C	10X6	7-3/8	14	7-3/8	4.66
3963-628C	10X8	7-7/16	18	9-7/16	7.24
3963-661C	12X2	7-5/8	8-3/4	3-3/16	1.89
3963-663C	12X3	7-15/16	9	4-5/16	1.76
3963-664C	12X4	7-3/4	10	5-5/16	2.66
3963-666C	12X6	8-1/2	14	7-7/16	5.15
3963-668C	12X8	7-7/8	18	9-7/16	7.00
3963-670C	12X10	8-9/16	18	11-5/8	13.62
3963-691C	14X2	8-1/4	9	3-3/16	2.31
3963-693C	14X3	8-5/8	10	4-5/16	2.20
3963-694C	14X4	8-9/16	12	5-3/8	3.74
3963-696C	14X6	8-3/4	14	7-5/8	6.49
3963-698C	14X8	9-3/8	17	9-5/8	8.27
3963-700C	14X10	9-7/16	19-1/2	11-5/8	10.24
3963-702C	14X12	9-7/16	20-3/4	13-5/8	16.65
3963-751C	16X2	9-5/16	9	3-3/16	1.98

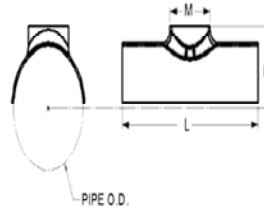
Fabricated Fittings Technical  
**CPVC Schedule 80 DWV Fabricated Fittings**



**Saddle SCH 80**

(Continued)

IPS O.D. X Socket Schedule 80  
 (Non Pressure Rated)



Part Number	Size	H	L	M	Approx. Wt. (Lbs.)
3963-753C	16X3	9-1/2	11-1/2	4-5/16	2.70
3963-754C	16X4	9-1/4	13-1/2	5-1/2	4.42
3963-756C	16X6	9-7/8	14	7-5/8	6.49
3963-758C	16X8	10-3/16	17	9-3/4	9.08
3963-760C	16X10	10-3/8	19	11-3/4	13.28
3963-762C	16X12	10-1/2	20-3/4	13-3/4	16.65
3963-764C	16X14	10-5/8	24	15	14.64
3963-781C	18X2	10-1/4	9	3-3/16	2.70
3963-783C	18X3	10-13/16	11-1/2	4-5/16	2.70
3963-784C	18X4	10-3/16	10	5-1/2	2.86
3963-786C	18X6	11-1/16	14-3/4	7-3/4	9.56
3963-788C	18X8	11-1/4	17	9-5/8	7.59
3963-790C	18X10	11-5/8	19	11-3/4	13.62
3963-792C	18X12	11-5/8	20-3/4	13-3/4	16.65
3963-794C	18X14	11-11/16	24	15-3/16	21.05
3963-796C	18X16	11-15/16	26	17-3/16	22.27
3963-811C	20X2	11-5/16	9	3-3/16	2.70
3963-813C	20X3	11-7/16	11-1/2	4-5/16	2.70
3963-814C	20X4	11-13/16	10	5-1/2	6.05
3963-816C	20X6	12-1/4	14-3/4	7-5/8	7.56
3963-818C	20X8	12-3/8	17	9-5/8	10.59
3963-820C	20X10	12-3/4	19	11-3/4	9.08
3963-822C	20X12	12-3/4	20-3/4	13-3/4	16.65
3963-824C	20X14	12-11/16	24	15-3/16	24.25
3963-826C	20X16	12-11/16	26	17-3/16	26.45
3963-828C	20X18	12-11/16	28	19-3/16	28.66
3963-901C	24X2	13-5/16	9	3-3/16	2.70
3963-903C	24X3	13-3/4	11-1/2	4-5/16	2.70
3963-904C	24X4	14-3/16	11	5-5/8	7.65
3963-906C	24X6	14-1/4	14-3/4	7-5/8	7.56
3963-908C	24X8	14-5/16	17	9-3/4	10.13
3963-910C	24X10	15	19	11-7/8	19.13
3963-912C	24X12	14-1/2	20-3/4	13-3/4	16.65
3963-914C	24X14	14-5/8	24	15	31.27
3963-916C	24X16	14-13/16	26	17-3/16	17.63
3963-918C	24X18	14-11/16	28	19-3/16	30.87
3963-920C	24X20	14-15/16	30	21-3/8	43.79



**Fabricated Fittings Technical**  
**CPVC Schedule 80 DWV Fabricated Fittings**

**Stub Saddle SCH 80**

IPS O.D. X Socket Schedule 80  
 (Non Pressure Rated)



Part Number	Size	H	L	M	N	Approx. Wt. (Lbs.)
3965-528C	6X2	7-3/8	8-3/4	2-13/16	2-5/16	1.76
3965-530C	6X3	8-7/16	9	4-1/8	2-7/8	2.98
3965-532C	6X4	9-7/16	10	5-3/16	3-7/8	4.01
3965-578C	8X2	8-3/8	8-3/4	2-13/16	2-5/16	2.59
3965-580C	8X3	9-7/16	9	4-1/8	2-7/8	3.15
3965-582C	8X4	10-7/16	10	5-3/16	3-7/8	4.51
3965-585C	8X6	11-13/16	14	7-1/2	4-1/4	8.29
3965-621C	10X2	9-7/16	8-3/4	2-13/16	2-5/16	2.56
3965-623C	10X3	10-1/2	9	4-1/8	2-7/8	3.54
3965-624C	10X4	11-1/2	10	5-3/16	3-7/8	4.89
3965-626C	10X6	12-7/8	14	7-1/2	4-1/4	9.11
3965-628C	10X8	14-3/4	18	9-5/8	5-1/8	15.54
3965-661C	12X2	10-7/16	8-3/4	2-13/16	2-5/16	2.53
3965-663C	12X3	11-1/2	9	4-1/8	2-7/8	2.86
3965-664C	12X4	12-1/2	10	5-3/16	3-7/8	4.73
3965-666C	12X6	13-7/8	14	7-1/2	4-1/4	9.36
3965-668C	12X8	15-3/4	18	9-5/8	5-1/8	14.75
3965-670C	12X10	16-3/4	18	11-15/16	5-1/8	21.69
3965-691C	14X2	11-1/16	9	2-13/16	2-5/16	2.70
3965-693C	14X3	12-1/8	10	4-1/8	2-7/8	3.18
3965-694C	14X4	13-1/8	12	5-3/16	3-7/8	5.55
3965-696C	14X6	14-1/2	14	7-1/2	4-1/4	10.93
3965-698C	14X8	16-3/8	17	9-5/8	5-1/8	15.30
3965-700C	14X10	17-3/8	19-1/2	11-15/16	5-1/8	23.25
3965-702C	14X12	18-3/8	20-3/4	14-1/8	5-1/8	36.53
3965-751C	16X2	12-1/16	9	2-13/16	2-5/16	2.53
3965-753C	16X3	13-1/8	11-1/2	4-1/8	2-7/8	3.76
3965-754C	16X4	14-1/8	13-1/2	5-3/16	3-7/8	6.23
3965-756C	16X6	15-1/2	14	7-1/2	4-1/4	10.94
3965-758C	16X8	17-3/8	17	9-5/8	5-1/8	17.36
3965-760C	16X10	18-3/8	19	11-15/16	5-1/8	26.29
3965-762C	16X12	19-3/8	20-3/4	14-1/8	5-1/8	36.53
3965-764C	16X14	20-1/2	24	15-1/2	5-1/2	41.78
3965-781C	18X2	13-1/16	9	2-13/16	2-5/16	2.68
3965-783C	18X3	14-1/8	11-1/2	4-1/8	2-7/8	3.76
3965-784C	18X4	15-1/8	10	5-3/16	3-7/8	4.51
3965-786C	18X6	16-1/2	14-3/4	7-1/2	4-1/4	14.00
3965-788C	18X8	18-3/8	17	9-5/8	5-1/8	15.63
3965-790C	18X10	19-3/8	19	11-15/16	5-1/8	25.77

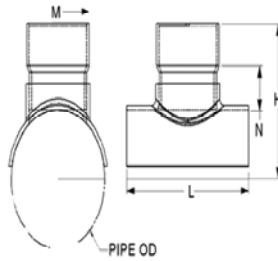
**Fabricated Fittings Technical**  
**CPVC Schedule 80 DWV Fabricated Fittings**



**Stub Saddle SCH 80**

(Continued)

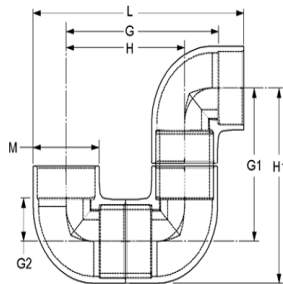
IPS O.D. X Socket Schedule 80  
 (Non Pressure Rated)



Part Number	Size	H	L	M	N	Approx. Wt. (Lbs.)
3965-792C	18X12	20-3/8	20-3/4	14-1/8	5-1/8	36.53
3965-794C	18X14	21-1/2	24	15-1/2	5-1/2	48.18
3965-796C	18X16	23-1/8	26	17-11/16	6-1/8	62.12
3965-811C	20X2	14-1/16	9	2-13/16	2-5/16	3.14
3965-813C	20X3	15-1/8	11-1/2	4-1/8	2-7/8	3.76
3965-814C	20X4	16-1/8	10	5-3/16	3-7/8	7.86
3965-816C	20X6	17-1/2	14-3/4	7-1/2	4-1/4	12.00
3965-818C	20X8	19-3/8	17	9-5/8	5-1/8	18.88
3965-820C	20X10	20-3/8	19	11-15/16	5-1/8	22.09
3965-822C	20X12	21-3/8	20-3/4	14-1/8	5-1/8	36.53
3965-824C	20X14	22-1/2	24	15-1/2	5-1/2	51.38
3965-826C	20X16	24-1/8	26	17-11/16	6-1/8	66.31
3965-828C	20X18	25	28	19-7/8	6	78.84
3965-901C	24X2	16-1/16	9	2-13/16	2-5/16	2.53
3965-903C	24X3	17-1/8	11-1/2	4-1/8	2-7/8	3.76
3965-904C	24X4	18-1/8	11	5-3/16	3-7/8	9.46
3965-906C	24X6	19-1/2	14-3/4	7-1/2	4-1/4	12.00
3965-908C	24X8	21-3/8	17	9-5/8	5-1/8	17.73
3965-910C	24X10	22-3/8	19	11-15/16	5-1/8	29.40
3965-912C	24X12	23-3/8	20-3/4	14-1/8	5-1/8	36.53
3965-914C	24X14	24-1/2	24	15-1/2	5-1/2	58.41
3965-916C	24X16	26-1/8	26	17-11/16	6-1/8	57.49
3965-918C	24X18	27	28	19-7/8	6	81.04
3965-920C	24X20	29-3/8	30	22-1/16	7-3/8	116.43

**P-Trap SCH 80**

Socket X Socket



Part Number	Size	G	G1	G2	H	H1	L	M	Approx. Wt. (Lbs.)
3906-012PTC	1-1/4	4-5/8	3-5/8	1	3-5/8	5-3/4	7	2-1/8	.94
3906-020PTC	2	6-1/8	4-11/16	1-7/16	4-11/16	7-9/16	9-1/16	2-15/16	1.91
3906-025PTC	2-1/2	8	6-3/4	1-1/2	6-1/2	8-1/2	9-13/16	3-1/2	4.36
3906-015PTC	1-1/2	5-3/16	4	1-3/16	4	6-3/8	7-3/4	2-11/32	1.26