

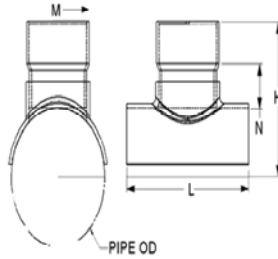
Fabricated Fittings Technical  
**CPVC Schedule 80 DWV Fabricated Fittings**



**Stub Saddle SCH 80**

(Continued)

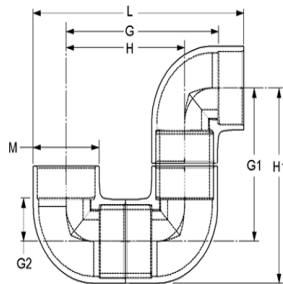
IPS O.D. X Socket Schedule 80  
 (Non Pressure Rated)



Part Number	Size	H	L	M	N	Approx. Wt. (Lbs.)
3965-792C	18X12	20-3/8	20-3/4	14-1/8	5-1/8	36.53
3965-794C	18X14	21-1/2	24	15-1/2	5-1/2	48.18
3965-796C	18X16	23-1/8	26	17-11/16	6-1/8	62.12
3965-811C	20X2	14-1/16	9	2-13/16	2-5/16	3.14
3965-813C	20X3	15-1/8	11-1/2	4-1/8	2-7/8	3.76
3965-814C	20X4	16-1/8	10	5-3/16	3-7/8	7.86
3965-816C	20X6	17-1/2	14-3/4	7-1/2	4-1/4	12.00
3965-818C	20X8	19-3/8	17	9-5/8	5-1/8	18.88
3965-820C	20X10	20-3/8	19	11-15/16	5-1/8	22.09
3965-822C	20X12	21-3/8	20-3/4	14-1/8	5-1/8	36.53
3965-824C	20X14	22-1/2	24	15-1/2	5-1/2	51.38
3965-826C	20X16	24-1/8	26	17-11/16	6-1/8	66.31
3965-828C	20X18	25	28	19-7/8	6	78.84
3965-901C	24X2	16-1/16	9	2-13/16	2-5/16	2.53
3965-903C	24X3	17-1/8	11-1/2	4-1/8	2-7/8	3.76
3965-904C	24X4	18-1/8	11	5-3/16	3-7/8	9.46
3965-906C	24X6	19-1/2	14-3/4	7-1/2	4-1/4	12.00
3965-908C	24X8	21-3/8	17	9-5/8	5-1/8	17.73
3965-910C	24X10	22-3/8	19	11-15/16	5-1/8	29.40
3965-912C	24X12	23-3/8	20-3/4	14-1/8	5-1/8	36.53
3965-914C	24X14	24-1/2	24	15-1/2	5-1/2	58.41
3965-916C	24X16	26-1/8	26	17-11/16	6-1/8	57.49
3965-918C	24X18	27	28	19-7/8	6	81.04
3965-920C	24X20	29-3/8	30	22-1/16	7-3/8	116.43

**P-Trap SCH 80**

Socket X Socket



Part Number	Size	G	G1	G2	H	H1	L	M	Approx. Wt. (Lbs.)
3906-012PTC	1-1/4	4-5/8	3-5/8	1	3-5/8	5-3/4	7	2-1/8	.94
3906-020PTC	2	6-1/8	4-11/16	1-7/16	4-11/16	7-9/16	9-1/16	2-15/16	1.91
3906-025PTC	2-1/2	8	6-3/4	1-1/2	6-1/2	8-1/2	9-13/16	3-1/2	4.36
3906-015PTC	1-1/2	5-3/16	4	1-3/16	4	6-3/8	7-3/4	2-11/32	1.26

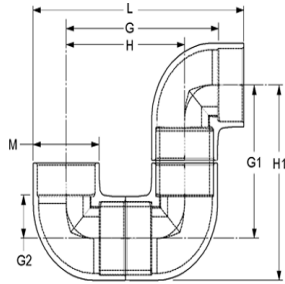


Fabricated Fittings Technical  
**CPVC Schedule 80 DWV Fabricated Fittings**

**P-Trap SCH 80**

Socket X Socket

(Continued)



Part Number	Size	G	G1	G2	H	H1	L	M	Approx. Wt. (Lbs.)
3906-030PTC	3	8-1/4	6-1/8	1-1/16	6-3/8	10-1/4	12-3/16	4-3/16	5.16
3906-040PTC	4	10-1/4	7-5/8	2-5/8	7-15/16	12-7/8	15-1/8	5-1/4	8.81
3906-060PTC	6	17-1/2	13-15/16	3-13/16	13-11/16	17-3/4	20-1/2	7-5/8	29.84
3906-080PTC	8	22-1/2	17-15/16	4-13/16	17-11/16	22-13/16	26-1/2	9-11/16	55.22
3906-100PTC	10	27-3/4	22-1/8	5-7/8	21-7/8	28-3/16	32-13/16	12-1/16	110.66