

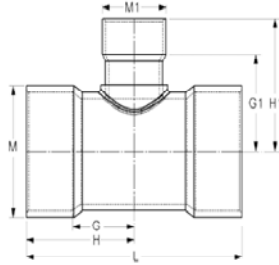
Fabricated Fittings Technical  
**CPVC Schedule 80 DWV Fabricated Fittings**



**Tee SCH 80- Reducer**

Socket X Socket X Socket

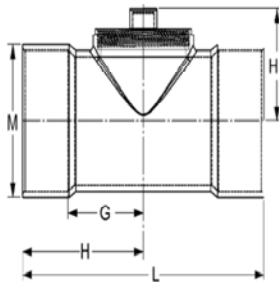
(Continued)



Part Number	Size	G	G1	H	H1	L	M	M1	Approx. Wt. (Lbs.)
3901-920C	24X20	16-3/4	18-3/16	28-3/4	28-3/16	57-1/2	26-7/16	22-1/16	351.59

**Test Tee- SCH 80**

Socket With Plug

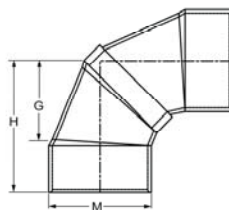


Part Number	Size	G	H	H1	L	M	Approx. Wt. (Lbs.)
3901-020CTEST <sup>†</sup>	2	1-5/16	2-13/16	2-3/4	5-5/8	2-13/16	.96
3901-030CTEST <sup>†</sup>	3	1-31/32	3-3/4	3-15/16	7-1/2	4-9/32	2.81
3901-040CTEST <sup>†</sup>	4	2-15/32	4-5/8	4-5/8	9-1/4	5-1/4	4.31
3901-060CTEST <sup>***</sup>	6	5-3/8	8-5/8	5-5/16	17-1/4	7-3/16	12.22
3901-080CTEST <sup>***</sup>	8	7-5/8	11-7/8	5-1/4	23-3/4	9-5/8	21.47
3901-100CTEST <sup>***</sup>	10	9-1/8	14-3/8	6-13/16	28-3/4	11-15/16	39.64
3901-120CTEST <sup>***</sup>	12	9-1/4	15-1/2	8-9/16	31	13-9/16	66.58
3901-140CTEST <sup>***</sup>	14	12-1/4	19-1/4	8-3/4	38-1/2	15-1/2	85.02

<sup>†</sup> Molded Tee with molded MPT plug <sup>\*\*</sup> Fabricated Tee with molded FPT adapter and MPT plug <sup>\*\*\*</sup> Fabricated Tee with custom threaded adapter and CPVC plug

**90° Elbow SCH 80**

Socket X Socket



Part Number	Size	G	H	M	Approx. Wt. (Lbs.)
3906-015C	1-1/2	2-5/16	3-1/16	2-3/8	.61
3906-020C	2	2-13/16	4-5/16	2-7/8	.94
3906-025C	2-1/2	3-1/16	4-7/8	3-1/2	2.03
3906-030C	3	3-13/16	5-11/16	4-3/16	2.35
3906-040C	4	4-9/16	6-7/8	5-1/4	4.58
3906-060C	6	7-1/2	10-3/4	7-1/2	10.79

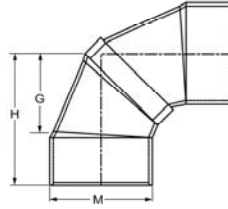


**Fabricated Fittings Technical**  
**CPVC Schedule 80 DWV Fabricated Fittings**

**90° Elbow SCH 80**

(Continued)

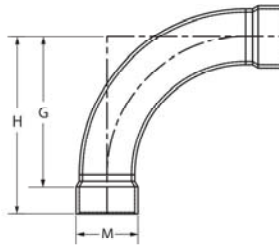
Socket X Socket



Part Number	Size	G	H	M	Approx. Wt. (Lbs.)
3906-080C	8	9-1/4	13-1/2	9-5/8	21.14
3906-100C	10	11-13/16	17-1/16	11-15/16	41.40
3906-120C	12	13-5/8	19-7/8	14-1/8	59.42
3906-140C	14	16	23	15-1/2	86.71
3906-160C	16	18-7/16	26-7/16	17-11/16	141.62
3906-180C	18	20-7/8	29-7/8	19-7/8	175.61
3906-200C	20	23-5/16	33-5/16	22-1/16	260.13
3906-240C	24	28-1/4	40-1/4	26-7/16	422.00

**90° Elbow - Long Sweep SCH 80**

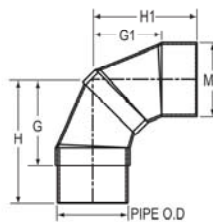
Socket X Socket



Part Number	Size	G	H	M	Approx. Wt. (Lbs.)
3906-020LSCF	2	4-13/16	6-5/16	2-13/16	1.18
3906-030LSCF	3	7	9	4-1/8	2.46
3906-040LSCF	4	9	11-1/4	5-3/16	4.85
3906-060LSCF	6	13	16-1/4	7-1/2	11.76
3906-080LSCF	8	23-1/2	27-3/4	9-5/8	31.25
3906-100LSCF	10	27	32-1/4	11-15/16	54.83

**90° Street Ell SCH 80**

Socket X Socket



Part Number	Size	G	G1	H	H1	M	Approx. Wt. (Lbs.)
3909-015C	1-1/2	2-5/8	2-7/16	4-1/8	3-13/16	2-1/32	.63
3909-020C	2	3	2-13/16	4-5/8	4-5/16	2-7/8	.93

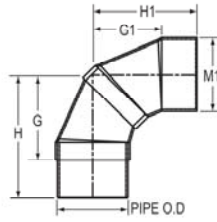
Fabricated Fittings Technical  
**CPVC Schedule 80 DWV Fabricated Fittings**



**90° Street Ell SCH 80**

(Continued)

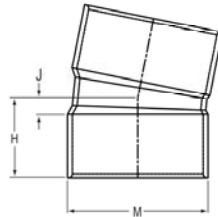
Socket X Socket



Part Number	Size	G	G1	H	H1	M	Approx. Wt. (Lbs.)
3909-030C	3	4-1/16	3-3/4	6-3/32	5-5/8	4-3/16	2.50
3909-040C	4	4-31/32	4-19/32	7-13/32	6-7/8	5-1/4	4.39
3909-060C	6	9	7-1/2	13	10-3/4	7-1/2	12.51
3909-080C	8	11-1/4	9-1/4	16-1/4	13-1/2	9-5/8	24.13
3909-100C	10	14-5/16	11-13/16	20-5/16	17-1/16	11-15/16	42.52
3909-120C	12	16-5/8	13-5/8	23-5/8	19-7/8	14-1/8	74.92
3909-140C	14	19-1/2	16	27-1/2	23	15-1/2	112.42
3909-160C	16	22-7/16	18-7/16	31-7/16	26-7/16	17-11/16	164.40
3909-180C	18	25-3/8	20-7/8	35-3/8	29-7/8	19-7/8	200.00
3909-200C	20	28-5/16	23-5/16	39-1/16	33-5/16	22-1/16	294.00
3909-240C	24	34-1/4	28-1/4	47-1/4	40-1/4	26-7/16	546.72

**11-1/4° Elbow SCH 80**

Socket X Socket



Part Number	Size	H	J	M	Approx. Wt. (Lbs.)
3911-040C	4	3	3/4	5-3/16	1.80
3911-060C	6	4-1/4	1	7-1/2	4.68
3911-080C	8	5-3/8	1-1/8	9-5/8	8.72
3911-100C	10	6-11/16	1-7/16	11-15/16	15.81
3911-120C	12	7-13/16	1-9/16	14-1/8	26.65
3911-140C	14	9	2	15-1/2	35.90
3911-160C	16	10-3/8	2-3/8	17-11/16	55.59
3911-180C	18	11-3/4	2-3/4	19-7/8	83.44
3911-200C	20	13-1/8	3-1/8	22-1/16	99.90
3911-240C	24	15-13/16	3-13/16	26-7/16	196.95