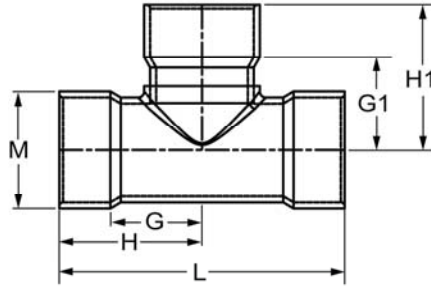


Fabricated Fittings Technical
PVC Schedule 40 & 80 DWV Fabricated Fittings



Tee SCH 40

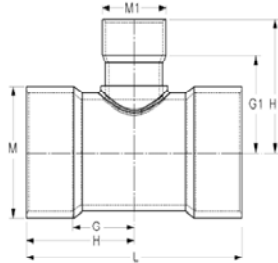
Socket x Socket x Socket



| Part Number | Size | G | G1 | H | H1 | L | M | Approx. Wt. (Lbs.) |
|--------------------------|------|--------|---------|---------|---------|--------|---------|--------------------|
| 3701-060 | 6 | 6-3/16 | 6-3/16 | 9-7/16 | 9-7/16 | 18-7/8 | 7-3/16 | 7.64 |
| 3701-080 | 8 | 7-5/16 | 7-5/16 | 11-9/16 | 11-9/16 | 23-1/8 | 9-1/4 | 15.87 |
| 3701-100 | 10 | 9 | 8-3/8 | 14-1/4 | 13-5/8 | 28-1/2 | 11-1/2 | 24.48 |
| 3701-120 | 12 | 11-1/4 | 10-3/16 | 17-1/2 | 16-7/16 | 35 | 13-9/16 | 38.09 |
| 3701-140 | 14 | 11 | 11 | 18 | 18 | 36 | 14-7/8 | 51.92 |
| 3701-160 | 16 | 12-7/8 | 12-7/8 | 20-7/8 | 20-7/8 | 41-3/4 | 17 | 72.28 |
| 3701-180 | 18 | 13-3/8 | 13-3/8 | 22-3/8 | 22-3/8 | 44-3/4 | 19-1/8 | 104.64 |
| 3701-200 | 20 | 15-1/2 | 15-7/16 | 25-1/2 | 25-7/16 | 51 | 21-3/16 | 139.78 |
| 3701-240 | 24 | 17-1/2 | 17-1/2 | 29-1/2 | 29-1/2 | 59 | 25-3/8 | 208.08 |

Tee SCH 40- Reducer

Socket X Socket X Socket



| Part Number | Size | G | G1 | H | H1 | L | M | M1 | Approx. Wt. (Lbs.) |
|--------------------------|------|--------|--------|---------|---------|--------|---------|---------|--------------------|
| 3701-528 | 6X2 | 3-3/8 | 5-5/16 | 6-5/8 | 7-1/16 | 13-1/4 | 7-3/16 | 2-11/16 | 4.29 |
| 3701-530 | 6X3 | 4-5/8 | 6-1/16 | 7-7/8 | 8-5/16 | 15-3/4 | 7-3/16 | 3-15/16 | 5.50 |
| 3701-532 | 6X4 | 5-1/8 | 6-3/8 | 8-3/8 | 8-5/8 | 16-3/4 | 7-3/16 | 5 | 5.76 |
| 3701-578 | 8X2 | 4-1/16 | 6-1/4 | 8-5/16 | 8 | 16-5/8 | 9-1/4 | 2-11/16 | 8.10 |
| 3701-580 | 8X3 | 4-9/16 | 7 | 8-13/16 | 9-1/4 | 17-5/8 | 9-1/4 | 3-15/16 | 10.14 |
| 3701-582 | 8X4 | 5-1/16 | 7-5/16 | 9-5/16 | 9-9/16 | 18-5/8 | 9-1/4 | 5 | 8.98 |
| 3701-585 | 8X6 | 6-3/16 | 7-3/8 | 10-7/16 | 10-5/8 | 20-7/8 | 9-1/4 | 7-3/16 | 10.87 |
| 3701-621 | 10X2 | 4-3/8 | 7-1/4 | 9-5/8 | 9 | 19-1/4 | 11-1/2 | 2-11/16 | 12.85 |
| 3701-623 | 10X3 | 4-7/8 | 8 | 10-1/8 | 10-1/4 | 20-1/4 | 11-1/2 | 3-15/16 | 14.52 |
| 3701-624 | 10X4 | 5-3/8 | 8-5/16 | 10-5/8 | 10-9/16 | 21-1/4 | 11-1/2 | 5 | 14.24 |
| 3701-626 | 10X6 | 5-7/8 | 8-3/8 | 11-1/8 | 11-5/8 | 22-1/4 | 11-1/2 | 7-1/4 | 16.30 |
| 3701-628 | 10X8 | 6-3/4 | 8-5/16 | 12 | 12-9/16 | 24 | 11-1/2 | 9-1/4 | 21.87 |
| 3701-661 | 12X2 | 4-3/4 | 8-1/4 | 11 | 10 | 22 | 13-9/16 | 2-11/16 | 19.36 |
| 3701-663 | 12X3 | 5-1/4 | 9 | 11-1/2 | 11-1/4 | 23 | 13-9/16 | 3-15/16 | 20.60 |

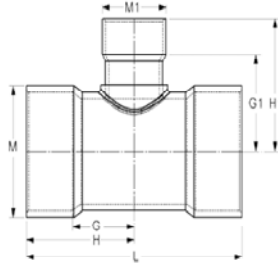


Fabricated Fittings Technical
PVC Schedule 40 & 80 DWV Fabricated Fittings

Tee SCH 40- Reducer

Socket X Socket X Socket

(Continued)



| Part Number | Size | G | G1 | H | H1 | L | M | M1 | Approx. Wt. (Lbs.) |
|-------------|-------|--------|----------|---------|----------|--------|----------|---------|--------------------|
| 3701-664 | 12X4 | 5-3/4 | 9-5/16 | 12 | 11-9/16 | 24 | 13-9/16 | 5 | 21.74 |
| 3701-666 | 12X6 | 7 | 9-3/8 | 13-1/4 | 12-5/8 | 26-1/2 | 13- 9/16 | 7-3/16 | 25.07 |
| 3701-668 | 12X8 | 8 | 9-5/16 | 14-1/4 | 13-9/16 | 28-1/2 | 13-9/16 | 9- 1/4 | 28.83 |
| 3701-670 | 12X10 | 10-1/4 | 10-3/8 | 16-1/2 | 15-5/8 | 33 | 13-9/16 | 11-1/2 | 35.28 |
| 3701-691 | 14X2 | 4-3/8 | 8-13/16 | 11-3/8 | 10-9/16 | 22-3/4 | 14-7/8 | 2-11/16 | 25.16 |
| 3701-693 | 14X3 | 4-7/8 | 9-9/16 | 11-7/8 | 9-9/16 | 23-3/4 | 14-7/8 | 3-15/16 | 26.67 |
| 3701-694 | 14X4 | 5-3/8 | 9-7/8 | 12-3/8 | 12-1/8 | 24-3/4 | 14-7/8 | 5 | 28.02 |
| 3701-696 | 14X6 | 6-3/8 | 9-15/16 | 13-3/8 | 13-3/16 | 26-3/4 | 14-7/8 | 7-3/16 | 30.94 |
| 3701-698 | 14X8 | 7-3/8 | 9-7/8 | 14-3/8 | 14-1/18 | 28-3/4 | 14-7/8 | 9-1/4 | 35.12 |
| 3701-700 | 14X10 | 8-1/2 | 10-15/16 | 15-1/2 | 16-3/16 | 31 | 14-7/8 | 11-1/2 | 40.54 |
| 3701-702 | 14X12 | 9-1/2 | 10-3/4 | 16-1/2 | 17 | 33 | 14-7/8 | 13-9/16 | 45.46 |
| 3701-751 | 16X2 | 4-9/16 | 9-3/4 | 12-9/16 | 11-1/2 | 25-1/8 | 17 | 2-11/16 | 35.81 |
| 3701-753 | 16X3 | 5-1/8 | 10-1/2 | 13-1/8 | 12-3/4 | 26-1/4 | 17 | 3-15/16 | 38.79 |
| 3701-754 | 16X4 | 5-5/8 | 10-13/16 | 13-5/8 | 13-1/16 | 27-1/4 | 17 | 5 | 39.09 |
| 3701-756 | 16X6 | 6-3/4 | 10-7/8 | 14-3/4 | 14-1/8 | 29-1/2 | 17 | 7-3/16 | 43.88 |
| 3701-758 | 16X8 | 7-3/4 | 10-13/16 | 15-3/4 | 15-1/16 | 31-1/2 | 17 | 9-1/4 | 48.61 |
| 3701-760 | 16X10 | 8-3/4 | 11-7/8 | 16-3/4 | 17-1/8 | 33-1/2 | 17 | 11- 1/2 | 52.11 |
| 3701-762 | 16X12 | 9-3/4 | 11-11/16 | 17-3/4 | 17-15/16 | 35-1/2 | 17 | 13-9/16 | 57.70 |
| 3701-764 | 16X14 | 10-3/8 | 11-15/16 | 18-3/8 | 18-15/16 | 36-3/4 | 17 | 14-7/8 | 62.36 |
| 3701-784 | 18X4 | 6-3/8 | 11-3/4 | 15-3/8 | 14 | 30-3/4 | 19-1/8 | 5 | 57.62 |
| 3701-786 | 18X6 | 7-3/8 | 11-13/16 | 16-3/8 | 15-1/16 | 32-3/4 | 19-1/8 | 7-3/16 | 62.55 |
| 3701-788 | 18X8 | 8-3/8 | 11-3/4 | 17-3/8 | 16 | 34-3/4 | 19-1/8 | 9-1/4 | 67.44 |
| 3701-790 | 18X10 | 9-1/2 | 12-13/16 | 18-1/2 | 18-1/16 | 37 | 19- 1/8 | 11- 1/2 | 73.18 |
| 3701-792 | 18X12 | 10-1/2 | 12-5/8 | 19-1/2 | 18-7/8 | 39 | 19-1/8 | 13-9/16 | 79.45 |
| 3701-794 | 18X14 | 11-1/8 | 12-7/8 | 20-1/8 | 19-7/8 | 40-1/4 | 19-1/8 | 14-7/8 | 84.51 |
| 3701-796 | 18X16 | 12-1/8 | 13-13/16 | 21-1/8 | 21-13/16 | 42-1/4 | 19-1/8 | 17 | 93.86 |
| 3701-814 | 20X4 | 6-1/8 | 12-3/4 | 16-1/8 | 15 | 32-1/4 | 21-3/16 | 5 | 67.95 |
| 3701-816 | 20X6 | 7-1/4 | 12-13/16 | 17-1/4 | 16-1/16 | 34-1/2 | 21-3/16 | 7-3/16 | 72.74 |
| 3701-818 | 20X8 | 8-1/4 | 12-3/4 | 18-1/4 | 17 | 36-1/2 | 21-3/16 | 9-1/4 | 78.78 |
| 3701-820 | 20X10 | 9-1/4 | 13-13/16 | 19-1/4 | 19-1/16 | 38-1/2 | 21-3/16 | 11-1/2 | 85.02 |
| 3701-822 | 20X12 | 10-1/4 | 13-5/8 | 20-1/4 | 19-7/8 | 40-1/2 | 21- 3/16 | 13-9/16 | 95.74 |
| 3701-824 | 20X14 | 10-7/8 | 13-7/8 | 20-7/8 | 20-7/8 | 41-3/4 | 21-3/16 | 14-7/8 | 99.08 |
| 3701-826 | 20X16 | 11-7/8 | 14-13/16 | 21-7/8 | 22-13/16 | 43-3/4 | 21-3/16 | 17 | 108.94 |
| 3701-828 | 20X18 | 12-7/8 | 14-3/8 | 22-7/8 | 23-3/8 | 45-3/4 | 21-3/16 | 19-1/8 | 120.23 |
| 3701-904 | 24X4 | 7-3/8 | 14-5/8 | 19-3/8 | 16-7/8 | 38-3/4 | 25-3/8 | 5 | 111.49 |
| 3701-906 | 24X6 | 8-3/8 | 14-11/16 | 20-3/8 | 17-15/16 | 40-3/4 | 25-3/8 | 7-3/16 | 122.45 |
| 3701-908 | 24X8 | 9-3/8 | 14-5/8 | 21-3/8 | 18-7/8 | 42-3/4 | 25-3/8 | 9-1/4 | 130.16 |
| 3701-910 | 24X10 | 10-1/2 | 15-11/16 | 22-1/2 | 20-15/16 | 45 | 25-3/8 | 11-1/2 | 138.07 |
| 3701-912 | 24X12 | 11-1/2 | 15-1/2 | 23-1/2 | 21-3/4 | 47 | 25-3/8 | 13-9/16 | 146.52 |

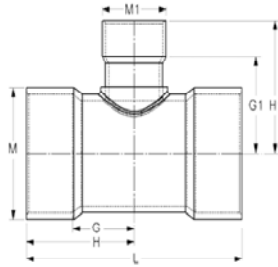
Fabricated Fittings Technical
PVC Schedule 40 & 80 DWV Fabricated Fittings



Tee SCH 40- Reducer

Socket X Socket X Socket

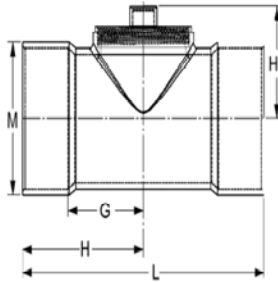
(Continued)



| Part Number | Size | G | G1 | H | H1 | L | M | M1 | Approx. Wt. (Lbs.) |
|-------------|-------|--------|----------|--------|----------|--------|--------|---------|--------------------|
| 3701-914 | 24X14 | 12-1/8 | 15-3/4 | 24-1/8 | 22-3/4 | 48-1/4 | 25-3/8 | 14-7/8 | 152.67 |
| 3701-916 | 24X16 | 13-1/8 | 16-11/16 | 25-1/8 | 24-11/16 | 50-1/4 | 25-3/8 | 17 | 164.20 |
| 3701-918 | 24X18 | 14-1/8 | 16-1/4 | 26-1/8 | 25-1/4 | 52-1/4 | 25-3/8 | 19-1/8 | 177.16 |
| 3701-920 | 24X20 | 15-1/8 | 17-5/16 | 27-1/8 | 27-5/16 | 54-1/4 | 25-3/8 | 21-3/16 | 190.51 |

Test Tee- SCH 40

Socket With Plug

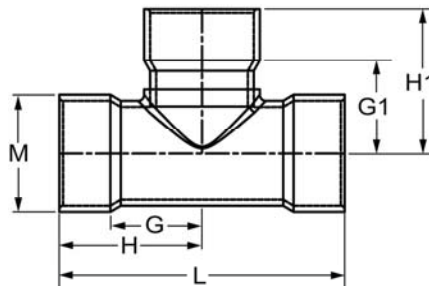


| Part Number | Size | G | H | H1 | L | M | Approx. Wt. (Lbs.) |
|-----------------|------|--------|--------|--------|--------|---------|--------------------|
| 3701-060TEST** | 6 | 5- 3/8 | 8-5/8 | 5-5/16 | 17-1/4 | 7-3/16 | 6.27 |
| 3701-080TEST** | 8 | 7- 3/8 | 11-5/8 | 6-3/16 | 23-1/4 | 9-1/4 | 11.93 |
| 3701-100TEST*** | 10 | 9 | 14-1/4 | 6-3/4 | 28-1/2 | 11-1/2 | 22.81 |
| 3701-120TEST*** | 12 | 9- 1/4 | 15-1/2 | 8-9/16 | 31 | 13-9/16 | 33.10 |
| 3701-140TEST*** | 14 | 11 | 18 | 9-1/16 | 36 | 14-7/8 | 43.45 |

* Molded Tee with molded MPT plug ** Fabricated Tee with molded FPT adapter and MPT plug *** Fabricated Tee with custom threaded adapter and HDPE plug

Tee SCH 80

Socket x Socket x Socket



| Part Number | Size | G | G1 | H | H1 | L | M | Approx. Wt. (Lbs.) |
|-------------|------|-------|-------|--------|--------|--------|-------|--------------------|
| 3901-060 | 6 | 6-1/4 | 6-1/4 | 9-1/2 | 9-1/2 | 19 | 7-1/2 | 12.70 |
| 3901-080 | 8 | 7-5/8 | 7-5/8 | 11-7/8 | 11-7/8 | 23-3/4 | 9-5/8 | 24.14 |

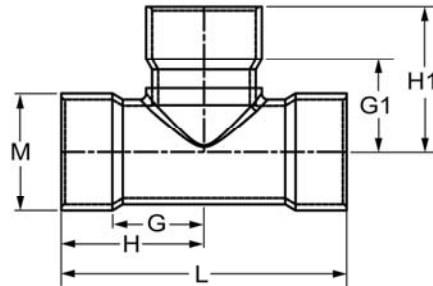


Fabricated Fittings Technical
PVC Schedule 40 & 80 DWV Fabricated Fittings

Tee SCH 80

(Continued)

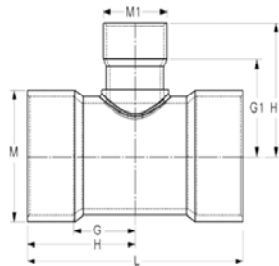
Socket x Socket x Socket



| Part Number | Size | G | G1 | H | H1 | L | M | Approx. Wt. (Lbs.) |
|-------------|------|--------|--------|--------|--------|--------|----------|--------------------|
| 3901-100 | 10 | 9 | 9 | 14-1/4 | 14-1/4 | 28-1/2 | 11-15/16 | 41.15 |
| 3901-120 | 12 | 11-1/4 | 11-1/4 | 17-1/2 | 17-1/2 | 35 | 14-1/8 | 70.98 |
| 3901-140 | 14 | 12-1/4 | 12-1/4 | 19-1/4 | 19-1/4 | 38-1/2 | 15-1/2 | 90.74 |
| 3901-160 | 16 | 13 | 13 | 21 | 21 | 42 | 17-11/16 | 120.59 |
| 3901-180 | 18 | 13-3/4 | 13-3/4 | 22-3/4 | 22-3/4 | 45-1/2 | 19-7/8 | 170.14 |
| 3901-200 | 20 | 16-3/8 | 16-3/8 | 26-3/8 | 26-3/8 | 52-3/4 | 22-1/16 | 253.11 |
| 3901-240 | 24 | 20-1/4 | 20-1/4 | 32-1/4 | 32-1/4 | 64-1/2 | 26-7/16 | 441.60 |

Tee SCH 80- Reducer

Socket X Socket X Socket



| Part Number | Size | G | G1 | H | H1 | L | M | M1 | Approx. Wt. (Lbs.) |
|-------------|------|---------|---------|---------|----------|--------|----------|---------|--------------------|
| 3901-528 | 6X2 | 4-5/8 | 5-3/16 | 7-7/8 | 6-15/16 | 15-3/4 | 7- 1/2 | 2-13/16 | 8.52 |
| 3901-530 | 6X3 | 4-3/4 | 5-3/4 | 8 | 8 | 16 | 7-1/2 | 4-1/8 | 8.92 |
| 3901-532 | 6X4 | 5-1/4 | 6-3/4 | 8-1/2 | 9 | 17 | 7-1/2 | 5-3/16 | 9.59 |
| 3901-578 | 8X2 | 4-11/16 | 6-1/8 | 8-15/16 | 7-7/8 | 17-7/8 | 9- 5/8 | 2-13/16 | 12.88 |
| 3901-580 | 8X3 | 5-3/16 | 6-11/16 | 9-7/16 | 8-15/16 | 18-7/8 | 9- 5/8 | 4-1/8 | 14.42 |
| 3901-582 | 8X4 | 5-3/4 | 7-11/16 | 10 | 9-15/16 | 20 | 9-5/8 | 5-3/16 | 16.57 |
| 3901-585 | 8X6 | 6- 3/4 | 8-1/16 | 11 | 11-5/16 | 22 | 9- 5/8 | 7- 1/2 | 19.60 |
| 3901-621 | 10X2 | 4-3/8 | 7-1/8 | 9-5/8 | 8-7/8 | 19-1/4 | 11-15/16 | 2-13/16 | 22.37 |
| 3901-623 | 10X3 | 4-7/8 | 7-11/16 | 10-1/8 | 9-15/16 | 20-1/4 | 11-15/16 | 4-1/8 | 22.99 |
| 3901-624 | 10X4 | 5-3/8 | 8-11/16 | 10-5/8 | 10-15/16 | 21-1/4 | 11-15/16 | 5-3/16 | 25.31 |
| 3901-626 | 10X6 | 5-7/8 | 9-1/16 | 11-1/8 | 12-5/16 | 22-1/4 | 11-15/16 | 7-1/2 | 28.42 |
| 3901-628 | 10X8 | 8- 1/4 | 9-15/16 | 13- 1/2 | 14-3/16 | 27 | 11-15/16 | 9- 5/8 | 35.90 |
| 3901-661 | 12X2 | 4-3/4 | 8 | 11 | 9-3/4 | 22 | 14- 1/8 | 2-13/16 | 35.17 |
| 3901-663 | 12X3 | 5-1/4 | 8-9/16 | 11-1/2 | 10-13/16 | 23 | 14-1/8 | 4-1/8 | 37.02 |
| 3901-664 | 12X4 | 5-3/4 | 9-9/16 | 12 | 11-13/16 | 24 | 14-1/8 | 5-3/16 | 39.32 |
| 3901-666 | 12X6 | 7-1/4 | 9-15/16 | 13-1/4 | 13-3/16 | 26-1/2 | 14-1/8 | 7- 1/2 | 45.74 |

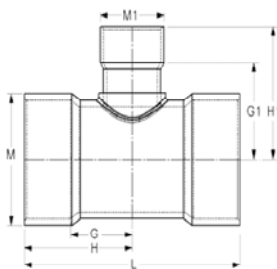
Fabricated Fittings Technical
PVC Schedule 40 & 80 DWV Fabricated Fittings



Tee SCH 80- Reducer

Socket X Socket X Socket

(Continued)



| Part Number | Size | G | G1 | H | H1 | L | M | M1 | Approx. Wt. (Lbs.) |
|-------------|-------|---------|----------|----------|----------|--------|----------|----------|--------------------|
| 3901-668 | 12X8 | 8 | 10-13/16 | 14-1/4 | 15-1/16 | 28-1/2 | 14-1/8 | 9-5/8 | 52.00 |
| 3901-670 | 12X10 | 10-1/4 | 10-13/16 | 16-1/2 | 16-1/16 | 33 | 14-1/8 | 11-15/16 | 62.01 |
| 3901-691 | 14X2 | 5-3/16 | 8-9/16 | 12-3/16 | 10-5/16 | 24-3/8 | 15-1/2 | 2-13/16 | 44.81 |
| 3901-693 | 14X3 | 5-3/4 | 9-1/8 | 12-3/4 | 11-3/8 | 25-1/2 | 15-1/2 | 4-1/8 | 45.79 |
| 3901-694 | 14X4 | 6-1/2 | 10-1/8 | 13-1/2 | 12-3/8 | 27 | 15-1/2 | 5-3/16 | 49.50 |
| 3901-696 | 14X6 | 8-1/4 | 10-1/2 | 15-1/4 | 13-3/4 | 30-1/2 | 15-1/2 | 7-1/2 | 56.33 |
| 3901-698 | 14X8 | 9-1/4 | 11-3/8 | 16-1/4 | 15-5/8 | 32-1/2 | 15-1/2 | 9-3/8 | 63.19 |
| 3901-700 | 14X10 | 10-1/8 | 11-3/8 | 17-1/8 | 16-5/8 | 34-1/4 | 15-1/2 | 11-15/16 | 70.63 |
| 3901-702 | 14X12 | 11 | 11-3/8 | 18 | 17-5/8 | 36 | 15-1/2 | 14-1/8 | 80.08 |
| 3901-751 | 16X2 | 5-7/8 | 9-1/2 | 13-7/8 | 11-1/4 | 27-3/4 | 17-11/16 | 2-13/16 | 63.28 |
| 3901-753 | 16X3 | 6-5/16 | 10-1/16 | 14-5/16 | 12-5/16 | 28-5/8 | 17-11/16 | 4-1/8 | 64.31 |
| 3901-754 | 16X4 | 6-1/8 | 11-1/16 | 14-1/8 | 13-5/16 | 28-1/4 | 17-11/16 | 5-3/16 | 64.55 |
| 3901-756 | 16X6 | 8-5/8 | 11-7/16 | 16-5/8 | 14-11/16 | 33-1/4 | 17-11/16 | 7-1/2 | 77.70 |
| 3901-758 | 16X8 | 9-5/8 | 12-5/16 | 17-5/8 | 16-9/16 | 35-1/4 | 17-11/16 | 9-5/8 | 85.11 |
| 3901-760 | 16X10 | 10-5/8 | 12-5/16 | 18-5/8 | 17-9/16 | 37-1/4 | 17-11/16 | 11-15/16 | 93.59 |
| 3901-762 | 16X12 | 11-5/8 | 12-5/16 | 19-5/8 | 18-9/16 | 39-1/4 | 17-11/16 | 14-1/8 | 103.31 |
| 3901-764 | 16X14 | 12-3/4 | 12-11/16 | 20-3/4 | 19-11/16 | 41-1/2 | 17-11/16 | 15-1/2 | 116.38 |
| 3901-784 | 18X4 | 6-7/8 | 11-15/16 | 15-7/8 | 14-3/16 | 31-3/4 | 19-7/8 | 5-3/16 | 96.69 |
| 3901-786 | 18X6 | 8-1/2 | 12-5/16 | 17-1/2 | 15-9/16 | 35 | 19-7/8 | 7-1/2 | 107.16 |
| 3901-788 | 18X8 | 9-1/2 | 13-3/16 | 18-1/2 | 17-7/16 | 37 | 19-7/8 | 9-5/8 | 110.40 |
| 3901-790 | 18X10 | 10-1/2 | 13-3/16 | 19-1/2 | 18-7/16 | 39 | 19-7/8 | 11-15/16 | 119.95 |
| 3901-792 | 18X12 | 11-1/2 | 13-3/16 | 20-1/2 | 19-7/16 | 41 | 19-7/8 | 14-1/8 | 130.75 |
| 3901-794 | 18X14 | 12-3/4 | 13-9/16 | 21-3/4 | 20-9/16 | 43-1/2 | 19-7/8 | 15-1/2 | 151.68 |
| 3901-796 | 18X16 | 13-1/2 | 14-3/16 | 22-1/2 | 22-3/16 | 45 | 19-7/8 | 17-11/16 | 163.17 |
| 3901-814 | 20X4 | 7-11/16 | 12-7/8 | 17-11/16 | 15-1/8 | 35-3/8 | 22-1/16 | 5-3/16 | 123.16 |
| 3901-816 | 20X6 | 8-7/8 | 13-1/4 | 18-7/8 | 16-1/2 | 37-3/4 | 22-1/16 | 7-1/2 | 133.48 |
| 3901-818 | 20X8 | 9-7/8 | 14-1/8 | 19-7/8 | 18-3/8 | 39-3/4 | 22-1/16 | 9-5/8 | 148.71 |
| 3901-820 | 20X10 | 10-7/8 | 14-1/8 | 20-7/8 | 19-3/8 | 41-3/4 | 22-1/16 | 11-15/16 | 157.48 |
| 3901-822 | 20X12 | 11-7/8 | 14-1/8 | 21-7/8 | 20-3/8 | 43-3/4 | 22-1/16 | 14-1/8 | 171.00 |
| 3901-824 | 20X14 | 12-7/8 | 14-1/2 | 22-7/8 | 21-1/2 | 45-3/4 | 22-1/16 | 15-1/2 | 182.95 |
| 3901-826 | 20X16 | 14 | 15-1/8 | 24 | 23-1/8 | 48 | 22-1/16 | 17-11/16 | 206.24 |
| 3901-828 | 20X18 | 15 | 15 | 25 | 24 | 50 | 22-1/16 | 19-7/8 | 218.37 |
| 3901-904 | 24X4 | 9 | 14-11/16 | 21 | 16-15/16 | 42 | 26-7/16 | 5-3/16 | 220.00 |
| 3901-906 | 24X6 | 9-1/4 | 15-1/16 | 21-1/4 | 18-5/16 | 42-1/2 | 26-7/16 | 7-1/2 | 222.11 |
| 3901-908 | 24X8 | 10-1/4 | 15-15/16 | 22-1/4 | 20-3/16 | 44-1/2 | 26-7/16 | 9-5/8 | 235.18 |
| 3901-910 | 24X10 | 11-1/4 | 15-15/16 | 23-1/4 | 21-3/16 | 46-1/2 | 26-7/16 | 11-15/16 | 236.36 |
| 3901-912 | 24X12 | 12-1/4 | 15-15/16 | 24-1/4 | 22-3/16 | 48-1/2 | 26-7/16 | 14-1/8 | 269.72 |
| 3901-914 | 24X14 | 13-1/4 | 16-5/16 | 25-1/4 | 23-5/16 | 50-1/2 | 26-7/16 | 15-1/2 | 285.14 |
| 3901-916 | 24X16 | 14-3/4 | 16-15/16 | 26-3/4 | 24-15/16 | 53-1/2 | 26-7/16 | 17-11/16 | 308.40 |

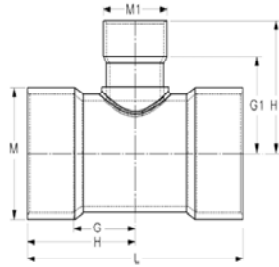


Fabricated Fittings Technical
PVC Schedule 40 & 80 DWV Fabricated Fittings

Tee SCH 80- Reducer

Socket X Socket X Socket

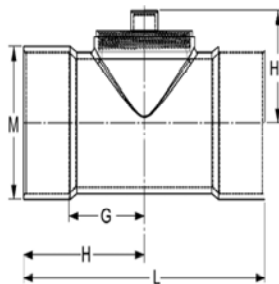
(Continued)



| Part Number | Size | G | G1 | H | H1 | L | M | M1 | Approx. Wt. (Lbs.) |
|-------------|-------|--------|----------|--------|----------|--------|---------|---------|--------------------|
| 3901-918 | 24X18 | 15-3/4 | 16-13/16 | 27-3/4 | 25-13/16 | 55-1/2 | 26-7/16 | 19-7/8 | 331.03 |
| 3901-920 | 24X20 | 16-3/4 | 18-3/16 | 28-3/4 | 28-3/16 | 57-1/2 | 26-7/16 | 22-1/16 | 361.00 |

Test Tee- SCH 80

Socket With Plug



| Part Number | Size | G | H | H1 | L | M | Approx. Wt. (Lbs.) |
|-----------------|------|---------|---------|---------|--------|----------|--------------------|
| 3901-020TEST* | 2 | 1-5/16 | 2-13/16 | 2-3/4 | 5-5/8 | 2-13/16 | .91 |
| 3901-030TEST* | 3 | 1-31/32 | 3-3/4 | 3-15/16 | 7-1/2 | 4-9/32 | 2.69 |
| 3901-040TEST* | 4 | 2-15/32 | 4-5/8 | 4-5/8 | 9-1/4 | 5-1/4 | 4.04 |
| 3901-060TEST*** | 6 | 6-1/4 | 9-1/2 | 4-3/8 | 19 | 7-1/2 | 10.24 |
| 3901-080TEST*** | 8 | 7-5/8 | 11-7/8 | 5-1/4 | 23-3/4 | 9-5/8 | 19.88 |
| 3901-100TEST*** | 10 | 9-1/8 | 14-3/8 | 6-13/16 | 28-3/4 | 11-15/16 | 34.11 |
| 3901-120TEST*** | 12 | 11-1/4 | 17-1/2 | 7-11/16 | 35 | 14-1/8 | 54.77 |
| 3901-140TEST*** | 14 | 12-1/4 | 19-1/4 | 8-3/4 | 38-1/2 | 15-1/2 | 78.08 |

* Molded Tee with molded MPT plug ** Fabricated Tee with molded FPT adapter and MPT plug *** Fabricated Tee with custom threaded adapter and HDPE plug