

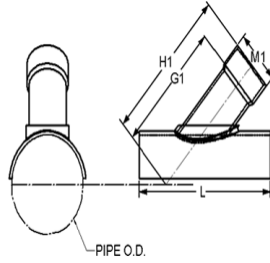
Fabricated Fittings Technical
PVC Schedule 40 & 80 DWV Fabricated Fittings



Wye Saddle, SCH 80

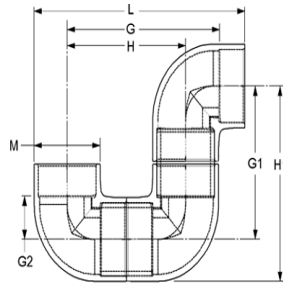
(Continued)

IPS O. D. X Socket Schedule 80
 Non-Pressure Rated



Part Number	Size	G1	H1	L	M1	Approx. Wt. (Lbs.)
3965-920X45	24X20	35-15/16	45-15/16	46-3/4	22-1/16	160.88

P-Traps



Part Number	Size	G	G1	G2	H	H1	L	M	Approx. Wt. (Lbs.)
3906-012PT	1-1/4	4-5/8	3-5/8	1	3-5/8	5-3/4	7	2-1/8	.92
3906-015PT	1-1/2	5-3/16	4	1-3/16	4	6-3/8	7-3/4	2-11/32	1.18
3906-020PT	2	6-1/8	4-11/16	1-7/16	4-11/16	7-9/16	9-1/16	2-15/16	1.80
3906-030PT	3	8-1/4	6-1/8	1-1/16	6-3/8	10-1/4	12-3/16	4-3/16	4.96
3906-040PT	4	10-1/4	7-5/8	2-5/8	7-15/16	12-7/8	15-1/8	5-1/4	8.50
3906-060PT	6	17-1/2	13-15/16	3-13/16	13-11/16	17-3/4	20-1/2	7-5/8	28.01
3906-080PT	8	22-1/2	17-15/16	4-13/16	17-11/16	22-13/16	26-1/2	9-11/16	53.52
3906-100PT	10	27-3/4	22-1/8	5-7/8	21-7/8	28-3/16	32-13/16	12-1/16	100.63
3906-120PT	12	33-1/8	26-3/8	7	26-1/8	33-1/2	39-3/16	14-1/4	165.06