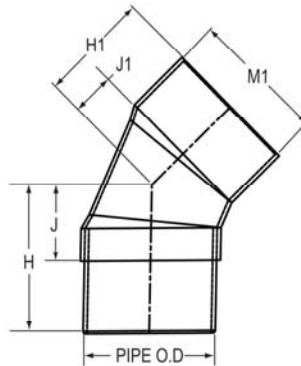


Fabricated Fittings Technical
PVC Schedule 40 & 80 DWV Fabricated Fittings



45° Street Ell SCH 40

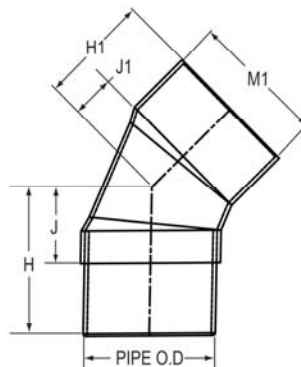
Spigot x Socket



Part Number	Size	H	H1	J	J1	M1	Approx. Wt. (Lbs.)
3727-040	4	6-1/16	3-13/16	3-1/16	1-9/16	5	2.03
3727-060	6	5-5/16	5-5/16	2-1/16	2-1/16	7-3/16	3.14
3727-080	8	6-3/4	6-3/4	2-1/2	2-1/2	9-1/4	5.72
3727-100	10	8-1/2	8-1/2	3-1/4	3-1/4	11-1/2	11.92
3727-120	12	10	10	3-3/4	3-3/4	13-9/16	16.29
3727-140	14	11-7/16	11-7/16	4-7/16	4-7/16	14-7/8	22.00
3727-160	16	18-1/8	13-1/8	9-1/8	5-1/8	17	44.00
3727-180	18	20-3/8	14-7/8	10-3/8	5-7/8	19-1/8	66.00
3727-200	20	22-9/16	16-9/16	11-9/16	6-9/16	21-3/16	84.00
3727-240	24	26-15/16	19-15/16	13-15/16	7-15/16	25-3/8	154.23

45° Street Ell SCH 80

Spigot x Socket



Part Number	Size	H	H1	J	J1	M1	Approx. Wt. (Lbs.)
3927-040	4	4-11/16	4-11/16	2-3/16	1-1/16	5-1/4	2.64
3927-060	6	5-3/8	5-3/8	2-1/8	2-1/8	7-1/2	7.01
3927-080	8	6-7/8	6-11/16	2-5/8	2-7/16	9-5/8	9.49
3927-100	10	8-7/16	8-9/16	3-3/16	3-5/16	11-15/16	19.54
3927-120	12	10-1/16	9-13/16	3-13/16	3-9/16	14-1/8	31.86
3927-140	14	11-9/16	11-9/16	4-9/16	4-9/16	15-1/2	41.24
3927-160	16	18-5/16	13-5/16	9-5/16	5-5/16	17-11/16	80.56
3927-180	18	20-1/2	15	10-1/2	6	19-7/8	117.40
3927-200	20	22-3/4	16-3/4	11-3/4	6-3/4	22-1/16	156.52

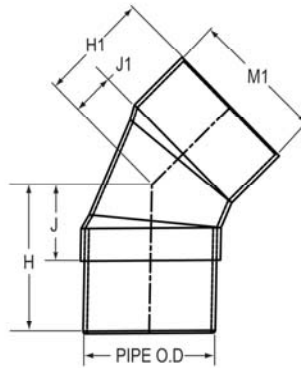


Fabricated Fittings Technical
PVC Schedule 40 & 80 DWV Fabricated Fittings

45° Street Ell SCH 80

(Continued)

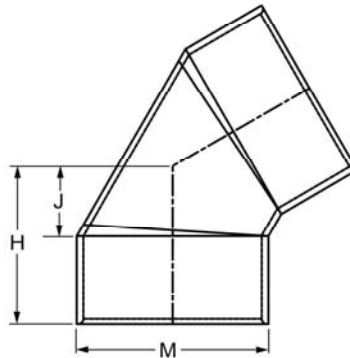
Spigot x Socket



Part Number	Size	H	H1	J	J1	M1	Approx. Wt. (Lbs.)
3927-240	24	27-3/16	20-3/16	14-3/16	8-3/16	26-7/16	271.75

60° Elbow SCH 40

Socket x Socket



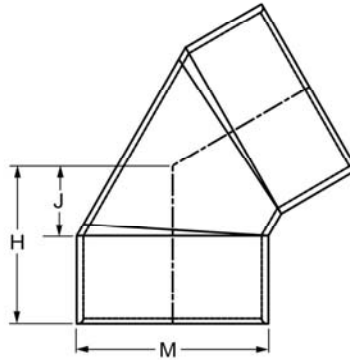
Part Number	Size	H	J	M	Approx. Wt. (Lbs.)
3724-040	4	4-1/4	2	5	1.70
3724-060	6	6-1/16	2-13/16	7-3/16	3.54
3724-080	8	7-5/8	3-3/8	9-1/4	6.60
3724-100	10	9-9/16	4-5/16	11-1/2	11.60
3724-120	12	11-3/16	4-15/16	13-9/16	17.46
3724-140	14	12-3/4	5-3/4	14-7/8	28.03
3724-160	16	16-5/8	6-5/8	17	36.38
3724-180	18	16-9/16	7-9/16	19-1/8	60.04
3724-200	20	23-11/16	13-11/16	22-1/16	106.31
3724-240	24	28-3/8	16-3/8	25-3/8	122.08

Fabricated Fittings Technical
PVC Schedule 40 & 80 DWV Fabricated Fittings



60° Elbow SCH 80

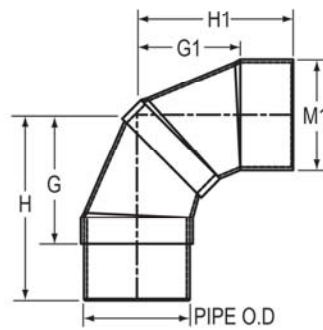
Socket x Socket



Part Number	Size	H	J	M	Approx. Wt. (Lbs.)
3924-040	4	4-5/16	2-1/16	5-3/16	2.60
3924-060	6	6-1/8	2-7/8	7-1/2	5.85
3924-080	8	7-3/4	3-1/2	9-5/8	18.81
3924-100	10	9-11/16	4-7/16	11-15/16	21.60
3924-120	12	11-5/16	5-1/16	14-1/8	34.76
3924-140	14	12-15/16	5-15/16	15-1/2	41.18
3924-160	16	14-13/16	6-13/16	17-11/16	65.72
3924-180	18	16-3/4	7-3/4	19-7/8	97.83
3924-200	20	23-11/16	13-11/16	22-1/16	232.59
3924-240	24	28-11/16	16-11/16	26-7/16	325.13

90° Street Ell SCH 40

Spigot x Socket



Part Number	Size	G	G1	H	H1	M1	Approx. Wt. (Lbs.)
3709-040	4	7-7/16	5-15/16	10-7/16	8-3/16	5	4.08
3709-060	6	6-1/8	6-1/8	9-3/8	9-3/8	7-3/16	5.60
3709-080	8	7-1/2	7-1/2	11-3/4	11-3/4	9-1/4	10.02
3709-100	10	9-9/16	9-9/16	14-13/16	14-13/16	11-1/2	20.09
3709-120	12	10-15/16	10-15/16	17-3/16	17-3/16	13-9/16	30.66
3709-140	14	12-15/16	12-15/16	19-15/16	19-15/16	14-7/8	44.65
3709-160	16	19-1/4	15-1/4	28-1/4	23-1/4	17	74.84
3709-180	18	21-13/16	17-5/16	31-13/16	26-5/16	19-1/8	115.96
3709-200	20	24-3/8	19-3/8	35-3/8	29-3/8	21-3/16	139.78

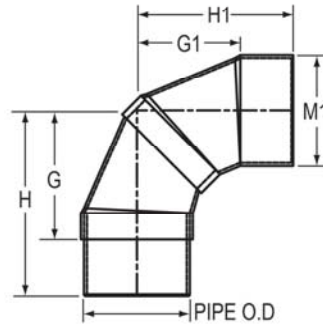


Fabricated Fittings Technical
PVC Schedule 40 & 80 DWV Fabricated Fittings

90° Street Ell SCH 40

(Continued)

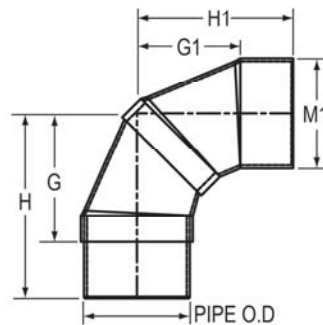
Spigot x Socket



Part Number	Size	G	G1	H	H1	M1	Approx. Wt. (Lbs.)
3709-240	24	29-7/16	23-7/16	42-7/16	35-7/16	25-3/8	238.36

90° Street Ell SCH 80

Spigot x Socket



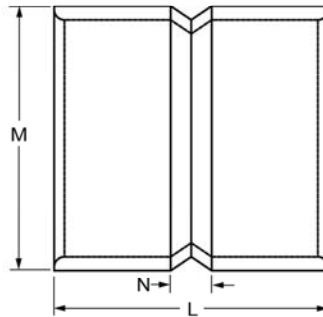
Part Number	Size	G	G1	H	H1	M1	Approx. Wt. (Lbs.)
3909-060	6	6-1/8	6-1/8	9-3/8	9-3/8	7-1/2	12.11
3909-080	8	7-5/8	7-7/16	11-7/8	11-11/16	9-5/8	18.17
3909-100	10	9-9/16	9-5/8	14-13/16	14-7/8	11-15/16	33.94
3909-120	12	11-1/8	10-7/8	17-3/8	17-1/8	14-1/8	55.04
3909-140	14	13-1/2	13-1/2	20-1/2	20-1/2	15-1/2	70.94
3909-160	16	19-9/16	15-9/16	28-9/16	23-9/16	17-11/16	122.96
3909-180	18	22-3/16	17-11/16	32-3/16	26-11/16	19-7/8	181.69
3909-200	20	24-13/16	19-13/16	35-13/16	29-13/16	22-1/16	233.25
3909-240	24	30	24	43	36	26-7/16	422.19

Fabricated Fittings Technical
PVC Schedule 40 & 80 DWV Fabricated Fittings



Coupling SCH 40

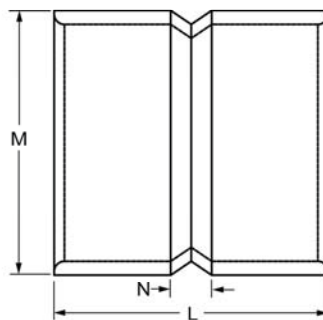
Socket x Socket



Part Number	Size	L	M	N	Approx. Wt. (Lbs.)
3729-040	4	6-3/8	5	1-7/8	1.18
3729-060	6	8	7-3/16	1-1/2	2.64
3729-080	8	10	9-1/4	1-1/2	5.33
3729-100	10	12-3/8	11-1/2	1-7/8	8.39
3729-120	12	14-3/4	13-9/16	2-1/4	13.26
3729-140	14	16-1/4	14-7/8	2-1/4	17.65
3729-160	16	18-5/8	17	2-5/8	27.00
3729-180	18	21-3/4	19-1/8	3-3/4	39.45
3729-200	20	24	21-3/16	4	51.18
3729-240	24	29-1/4	25-3/8	5-1/4	82.20

Coupling SCH 80

Socket x Socket



Part Number	Size	L	M	N	Approx. Wt. (Lbs.)
3929-020	2	4-3/4	2-13/16	1-1/4	.46
3929-030	3	5-3/4	4-1/8	1-1/4	1.05
3929-040	4	6-1/2	5-3/16	2	1.85
3929-060	6	8	7-1/2	1-1/2	4.27
3929-080	8	10	9-5/8	1-1/2	8.52
3929-100	10	12-1/2	11-15/16	2	14.40
3929-120	12	14-1/4	14-1/8	1-3/4	21.80
3929-140	14	16-1/4	15-1/2	2-1/4	29.69
3929-160	16	18-5/8	17-11/16	2-5/8	42.40

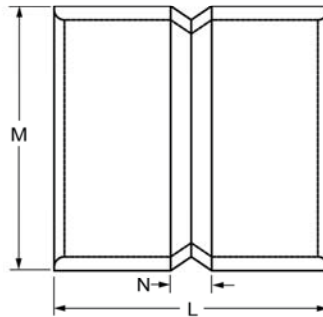


Fabricated Fittings Technical
PVC Schedule 40 & 80 DWV Fabricated Fittings

Coupling SCH 80

(Continued)

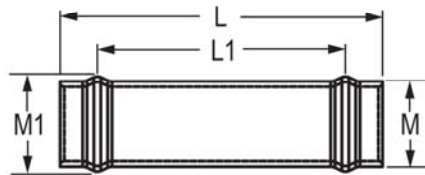
Socket x Socket



Part Number	Size	L	M	N	Approx. Wt. (Lbs.)
3929-180	18	22	19-7/8	4	67.00
3929-200	20	25-3/4	22-1/16	5-3/4	84.73
3929-240	24	29-1/4	26-7/16	5-1/4	147.22

Repair Coupling SCH 40

Gasket x Gasket



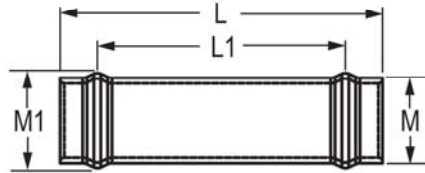
Part Number	Size	L	L1	M	M1	Approx. Wt. (Lbs.)
3728-040	4	19-1/2	15	5	5-5/8	4.18
3728-060	6	23	18-1/4	7-3/16	7-13/16	8.33
3728-080	8	26-1/8	21-1/2	9-1/16	9-13/16	14.00
3728-100	10	27	22-1/8	11-1/2	12-11/16	20.94
3728-120	12	28-1/4	22-5/8	13-9/16	14-13/16	28.48
3728-140	14	30	21-1/2	14-7/8	16-3/8	36.67
3728-160	16	31	24	17	18-1/2	49.66
3728-180	18	32	22-5/8	19-1/8	20-7/8	69.60
3728-200	20	32	23-1/2	21-3/16	23-3/16	80.72
3728-240	24	32	23-1/2	25-3/8	27-3/4	127.12

Fabricated Fittings Technical
PVC Schedule 40 & 80 DWV Fabricated Fittings



Repair Coupling SCH 80

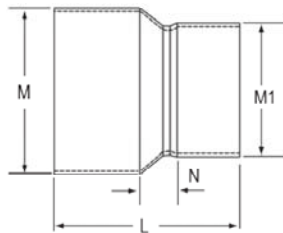
Gasket x Gasket



Part Number	Size	L	L1	M	M1	Approx. Wt. (Lbs.)
3928-040	4	19-1/2	15	5-3/16	5-3/4	5.68
3928-060	6	23	18-1/4	7-1/2	8-1/8	12.61
3928-080	8	26-1/8	19	9-5/8	10-3/8	21.38
3928-100	10	28	21-1/4	11-15/16	13-1/8	34.00
3928-120	12	29	21-3/8	14-1/8	15-3/8	49.16
3928-140	14	30	21	15-1/2	17-1/4	62.11
3928-160	16	31	22-1/4	17-11/16	18-7/8	75.99
3928-180	18	32	22-5/8	19-7/8	21-7/8	73.10
3928-200	20	32	23-1/2	22-1/16	24-1/16	113.21
3928-240	24	32	23-1/2	26-7/16	28-13/16	142.50

Reducer Coupling- SCH 40

Socket X Socket



Part Number	Size	L	M	M1	N	Approx. Wt. (Lbs.)
3729-528	6X2	9-1/4	7-1/8	5-5/16	4-5/8	2.77
3729-530	6X3	11-15/16	7-1/8	3-15/16	6-7/16	2.64
3729-532	6X4	8-7/8	7- 3/32	5- 1/32	3- 1/4	2.04
3729-578	8X2	14-7/8	9-3/16	5-5/16	9-1/4	5.75
3729-580	8X3	17-9/16	9-3/16	3-15/16	11-1/16	5.17
3729-582	8X4	14- 1/2	9-3/16	5	8	4.80
3729-585	8X6	11-1/2	9-3/16	7-3/16	3-1/2	3.73
3729-621	10X2	17-3/4	11-3/8	5-5/16	11-1/8	8.57
3729-623	10X3	20-7/16	11-3/8	3-15/16	12-15/16	7.48
3729-624	10X4	17-3/8	11-3/8	5	9-7/8	7.18
3729-626	10X6	13-7/8	11-3/8	7-1/4	5-3/8	6.61
3729-628	10X8	13-1/4	11-9/16	9-7/16	3-3/4	8.95
3729-661	12X2	24-3/8	13-9/16	5-5/16	16-3/4	16.96